



the smart choice for VALUE in

**MODULAR HOMES**

[WWW.BONNAVILLA.COM](http://WWW.BONNAVILLA.COM)



the smart choice for VALUE in

# MODULAR HOMES

## FLOOR PLAN INDEX

BELLAVISTA® SERIES	SIZE	AREA	BEDS / BATHS
ACACIA	29'8 X 36'	1068	2 / 1
ALMOND	29'8 X 36/40'	1127	2 / 1
EVERGREEN	29'8 X 44'	1305	3 / 2
BIRCH	29'8 X 48'	1424	3 / 2
BEECH	29'8 X 52'	1543	3 / 2
CEDAR	29'8 X 52'	1543	3 / 2
CHESTNUT	29'8 X 52'	1543	3 / 2
COLORADO	29'8 X 56'	1661	3 / 2
GLENWOOD	29'8 X 56'	1661	3 / 2
CYPRESS	29'8 X 58'	1721	3 / 2
HALFORD	29'8 X 60'	1780	3 / 2
HAZEL	29'8 X 60'	1780	3 / 2
OLEANDER	29'8 X 60'	1780	3 / 2
JOSHUA	29'8 X 64'	1899	3 / 2
HAWTHORNE	29'8 X 64'	1899	3 / 2
IRONWOOD	29'8 X 64'	1899	3 / 2
JUNIPER	29'8 X 64'	1899	3 / 2
JERSEY	29'8 X 68'	2017	3 / 2
POPLAR	29'8 X 68'	2017	3 / 2
SYCAMORE	29'8 X 68/76'	2136	3 / 2
REDWOOD	29'8 X 72'	2136	3 / 2
RED OAK	29'8 X 76'	2255	3 / 2
SEQUOIA	29'8 X 76'	2255	3 / 2
SILVER OAK	29'8 X 76'	2255	3 / 2.5
SUGARBERRY	29'8 X 76'	2255	3 / 2
TAMARACK	29'8 X 76'	2255	3 / 2
WILLOW	29'8 X 76'	2255	4 / 2
HAMILTON	14'10 X 60', 14'10 X 52', 14'10 X 29'8	2101	3 / 2
HARLAN	29'8 X 64', 14'10 X 29'8	2339	3 / 2.5
CALAMUS	44'6 X 54'	2328	3 / 2

\*BONNAVILLA INVESTS IN CONTINUOUS PRODUCT AND PROCESS IMPROVEMENT IN OUR HOMES. PLANS, DIMENSIONS, FEATURES, MATERIALS, SPECIFICATIONS, AND AVAILABILITY REPRESENTED ARE SUBJECT TO CHANGE AT ANY TIME, WITHOUT NOTICE OR OBLIGATION. ELEVATIONS AND RENDERINGS ARE FOR DESIGN PURPOSES ONLY AND MAY REFLECT OPTIONAL ITEMS, ITEMS SUPPLIED ON-SITE BY OTHERS, OR ITEMS NOT AVAILABLE ON CERTAIN PROJECTS OR IN CERTAIN AREAS.

# STANDARD FEATURES



## CONSTRUCTION

- \* 3/12 Roof Pitch - 40# Roof Load
- \* R-19 Batt Insulation - Ext. Wall Insulation
- \* R-40 Blown Insulation - Roof/Ceiling
- \* Perimeter Insulation in Floor Cavity
  - \* 8' Sidewalls (w/ Flat Ceilings)
- \* Insulated Door/Window Headers
  - \* 2x10 Floor Joist 16" o.c.
- \* 11-7/8" Marriage Line LVL w/ Inline Heat Duct
  - \* T&G OSB Floor Decking
- \* 2x6 Exterior Wall Framing (Double Top Plate)-16" o.c.
  - \* 7/16" OSB Ext. Wall Sheathing (Typical)
  - \* House Wrap Siding Underlayment
    - \* 4" Dutch Lap Vinyl Siding
    - \* Architectural Shingles
    - \* 12" Overhang

## INTERIOR WALLS/ CEILING

- \* 2x4 Interior Walls
- \* Orange Peel - Interior Drywall Texture
  - \* 1/2" Drywall Walls
  - \* 5/8" Drywall Ceilings
- \* Primed and Painted Interior Walls and Ceilings
  - \* 2 Panel White Painted Interior Doors
    - \* White Painted Base & Case
    - \* Nickel Interior Door Knobs
  - \* Window Blinds (White) - Throughout

## CABINETRY & COUNTERS

- \* Kensington Maple Mocha or Kensington Dusk Cabinets
  - \* Stained Wood Stiles & Face Frames
- \* Crown Molding on Overhead Cabinets
  - \* Laminate Counter Tops / Edge
  - \* Metal Edging on Tile Throughout

## HVAC

- \* Gas Furnace & Duct Work Installed
- \* Perimeter Heat System w/ Floor Registers
  - \* Indirect Return Air
- \* Programmable Digital Thermostat

## WINDOW / EXTERIOR DOORS

- \* Vinyl - Single Hung White Low-E Windows
- \* 36" x 80" 3-Panel Fiberglass - White - Front/Rear Door w/ Nickel Knob & Deadbolt

## ELECTRICAL

- \* 200 Amp Electric Service w/ 40 spaces
- \* Smoke Alarms/CO2 Detection w/Battery Back-up
- \* (2) Weather Resistant Exterior GFIs (Front/Rear)
- \* Nickel Trimmed Surface Mount Lights- Throughout
  - \* Nail-on Electrical Boxes

## KITCHEN

- \* 6" Tile Backsplash
- \* 18.2 C.F. Frost Free Double Door Refrigerator - (White/Black)
- \* 30" Freestanding Electric, Self-Clean Range - (White/Black)
- \* 30" Lighted Range Hood w/Recirculating Vent - (White/Black)
  - \* 2 Cycle Dishwasher (White/Black)
- \* Double Bowl Stainless Steel Top-Mount Sink
  - \* Dual Lever Faucet w/Spray - Nickel
- \* Glue-Down Resilient Vinyl Tile Flooring
- \* (1) Light over Sink, (1) Light Centered in Kitchen
- \* Pendant Light - Dining & Morning Rooms

## BATHROOM

- \* 6" Tile Backsplash
- \* Bathroom 2-Bulb Vanity Light
  - \* Low Flow Stools - White
- \* White China Lavs - Dual Lever Nickel Faucets
  - \* 1-Piece Fiberglass (White ) Tub/Shower (Master & Main Baths)
- \* Fan/Light Combination (Separate Switch) in Ceiling
  - \* Glue-Down Resilient Vinyl Tile Flooring
  - \* Designer Mirror Trim

## UTILITY

- \* Laundry Overhead Shelf
- \* 40 Gallon Electric Water Heater
  - \* 1 - Exterior Hydrant (Rear)
- \* Glue-Down Resilient Vinyl Tile Flooring

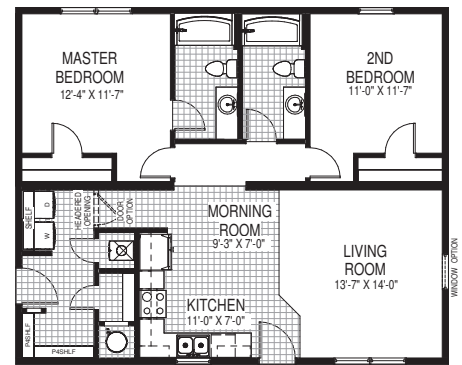
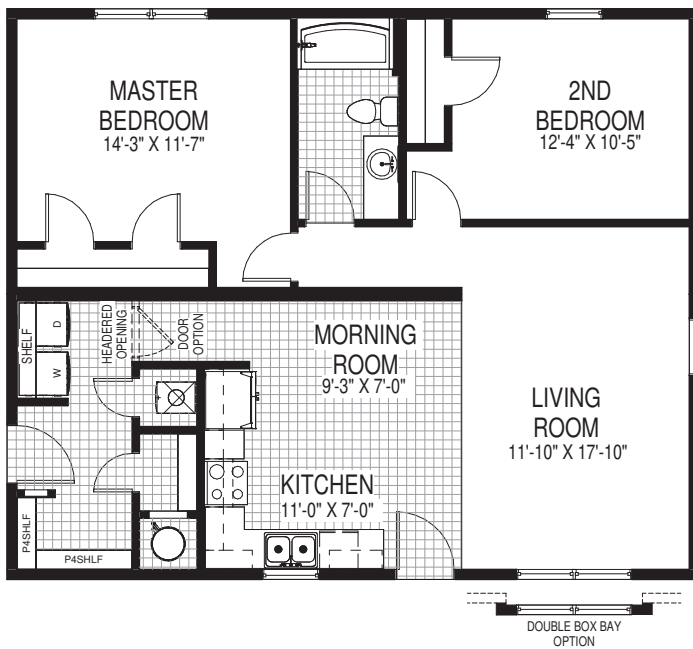
## OTHER ROOM FLOORING

- \* Level 1 Shaw Carpet w/6# Rebond Carpet Pad
  - \* Glue-Down Resilient Vinyl Tile Flooring

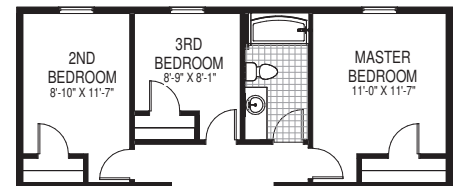


# Acacia

1068 Sq. Ft.  
29'8" x 36'0"



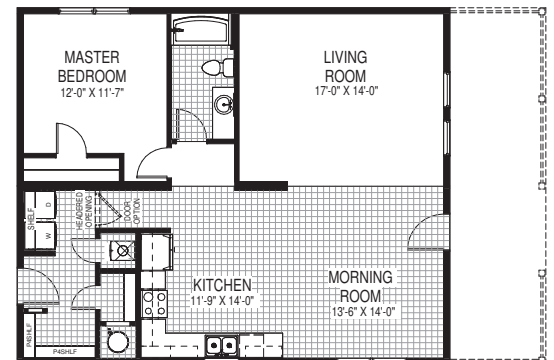
2 BED | 2 BATH



3 BED | 1 BATH



The Acacia is one of our most versatile homes. If you're looking for a home featuring an open kitchen to living area with separate utility room, a master bedroom with its own master bath, start here! A third bedroom option is also available.

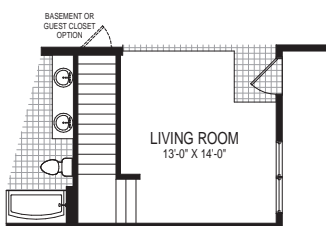
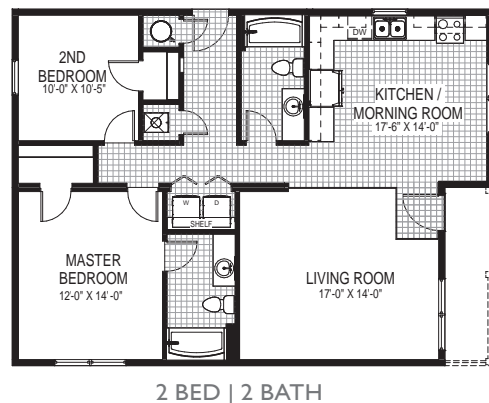
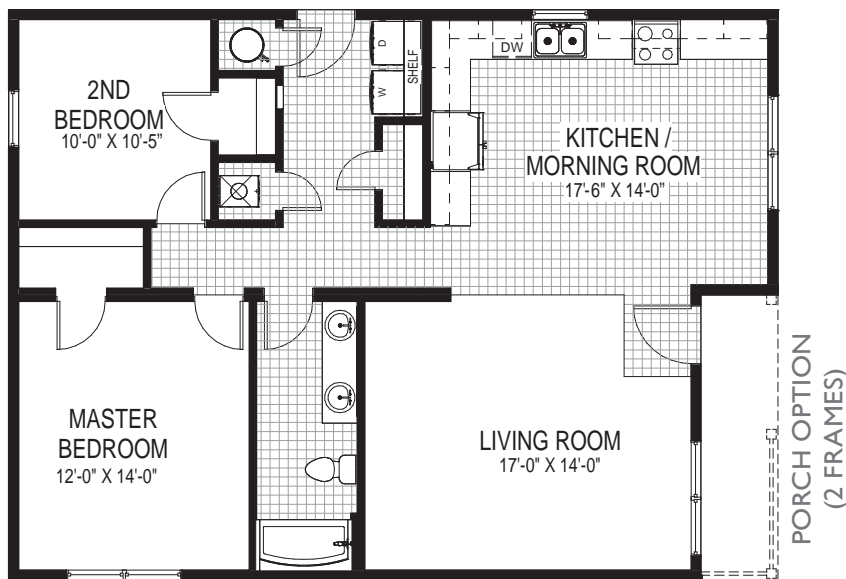


1 BED | 1 BATH W/ PORCH OPTION



# Almond

1127 Sq. Ft.  
29'8" x 36'0"/40'0"



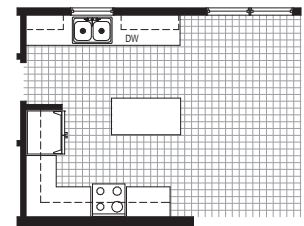
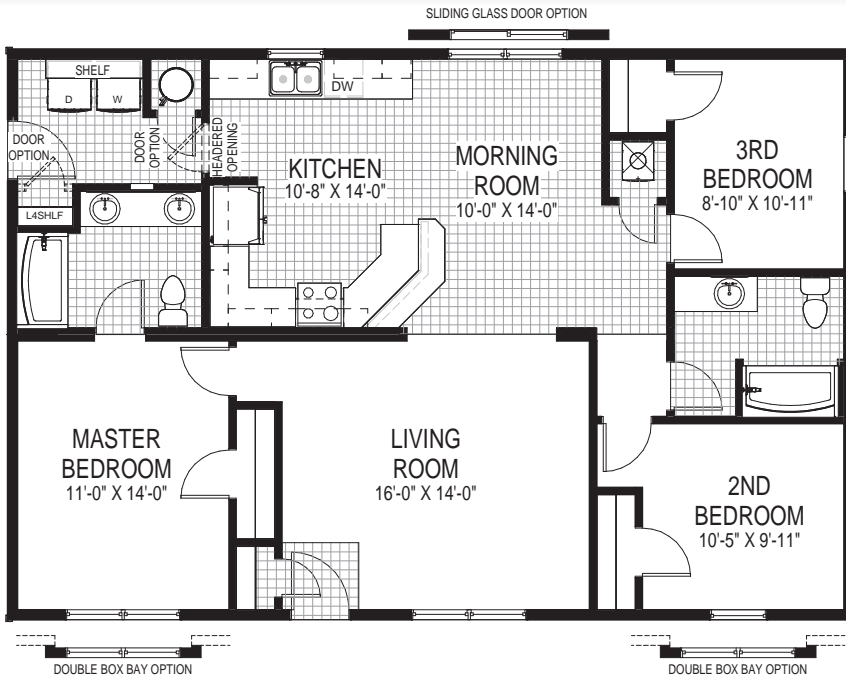
ALTERNATE  
CAPE COD OPTION



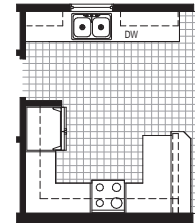


# Evergreen

1305 Sq. Ft.  
29'8" x 44'0"

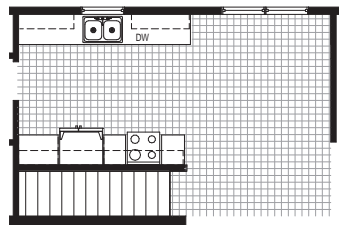


ALTERNATE KITCHEN  
W/ IL02 ISLAND

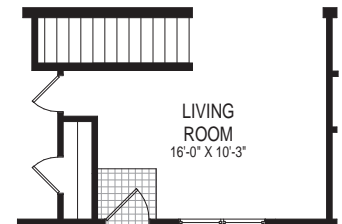


ALTERNATE KITCHEN  
W/ PENINSULA

The Evergreen model enables you to get the most out of every square foot. The plan boasts three moderately-sized bedrooms in a little over 1200 square foot of space. The large kitchen and open floor plan can be accented further by adding vaulted ceilings.



ALTERNATE GALLEY KITCHEN  
FOR BASEMENT STAIR OPTION

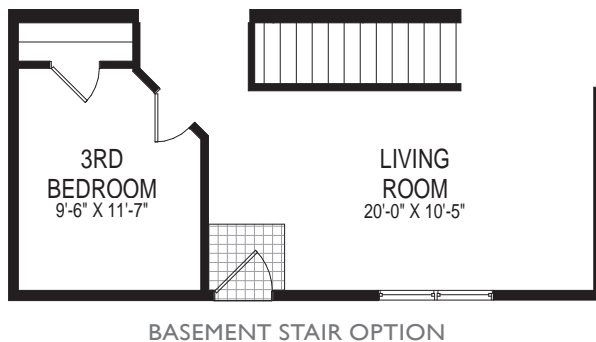
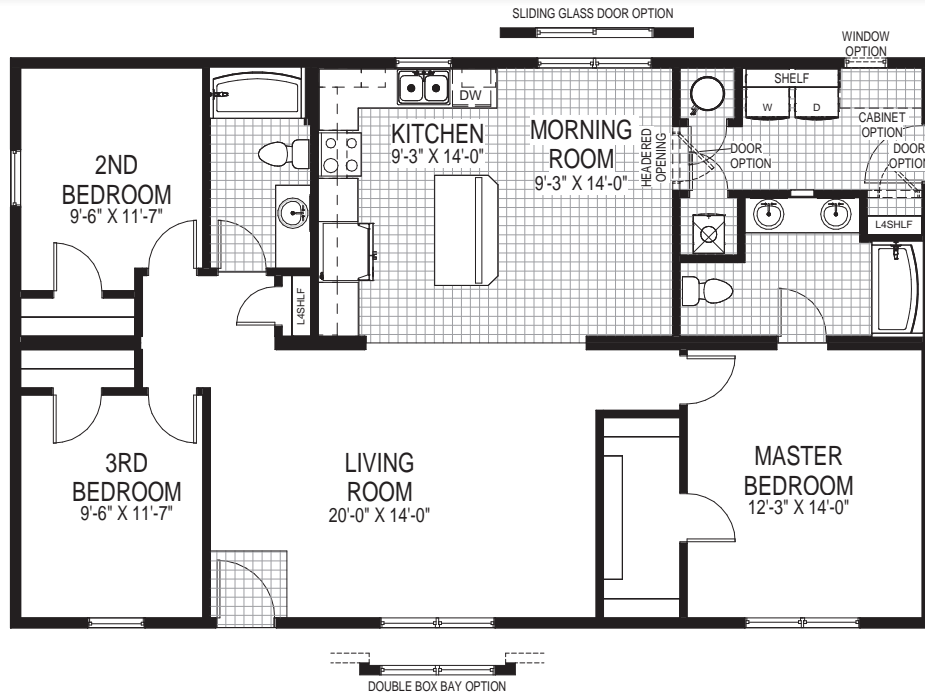


BASEMENT STAIR OPTION



# Birch

1424 Sq. Ft.  
29'8" x 48'0"

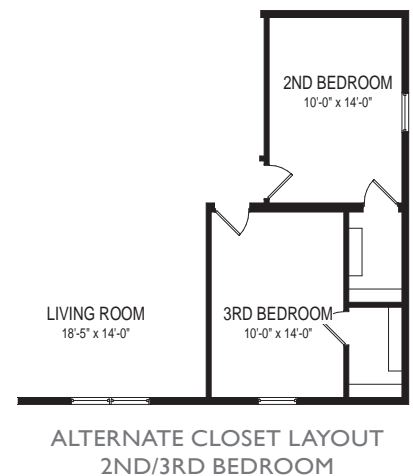
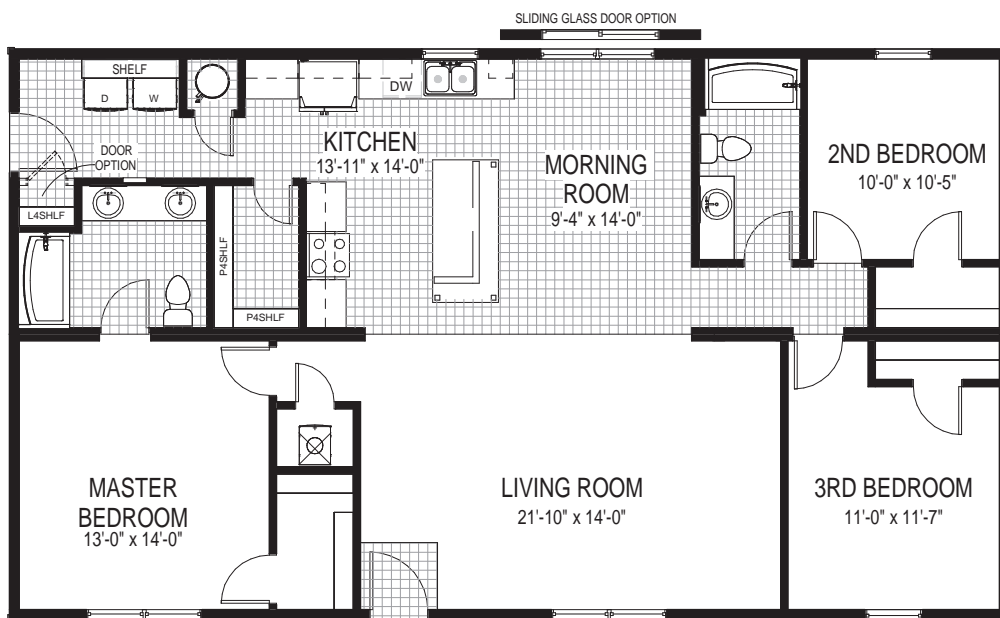


At only 48 feet long, the Birch offers an open floor plan with generously-sized bedrooms. The kitchen, morning room, and living room all merge together to provide one open area. One can add our vaulted ceiling option to make this space seem even more grand.

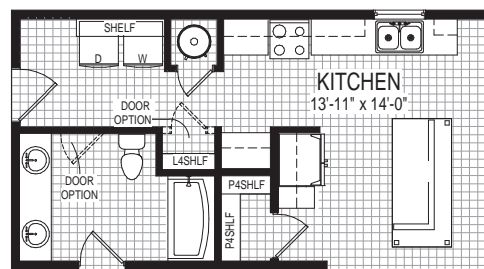


# Beech

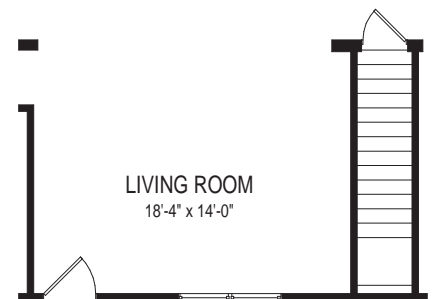
1543 Sq. Ft.  
29'8" x 52'0"



If the home you're searching for requires an open floor plan with a large living room and walk-in closet potential, the Beech floor plan will suit you perfectly. Featuring a walk-in pantry and large center island, this kitchen can pack all the amenities you desire.



ALTERNATE KITCHEN/BATH LAYOUT



ALTERNATE BASEMENT STAIR OPTION

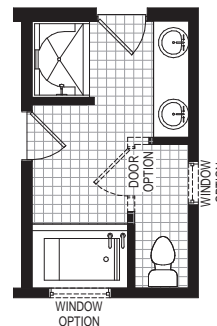
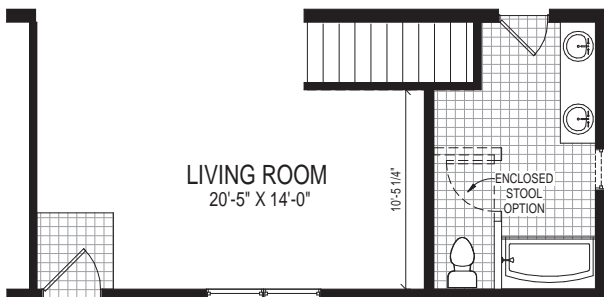
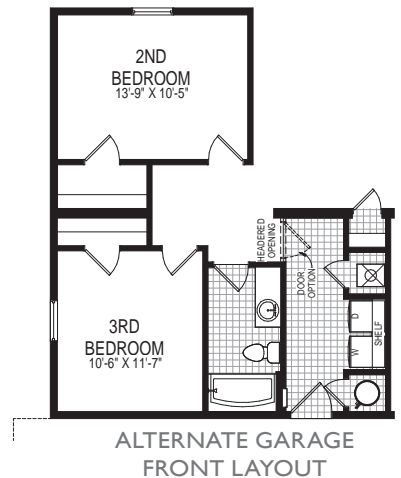
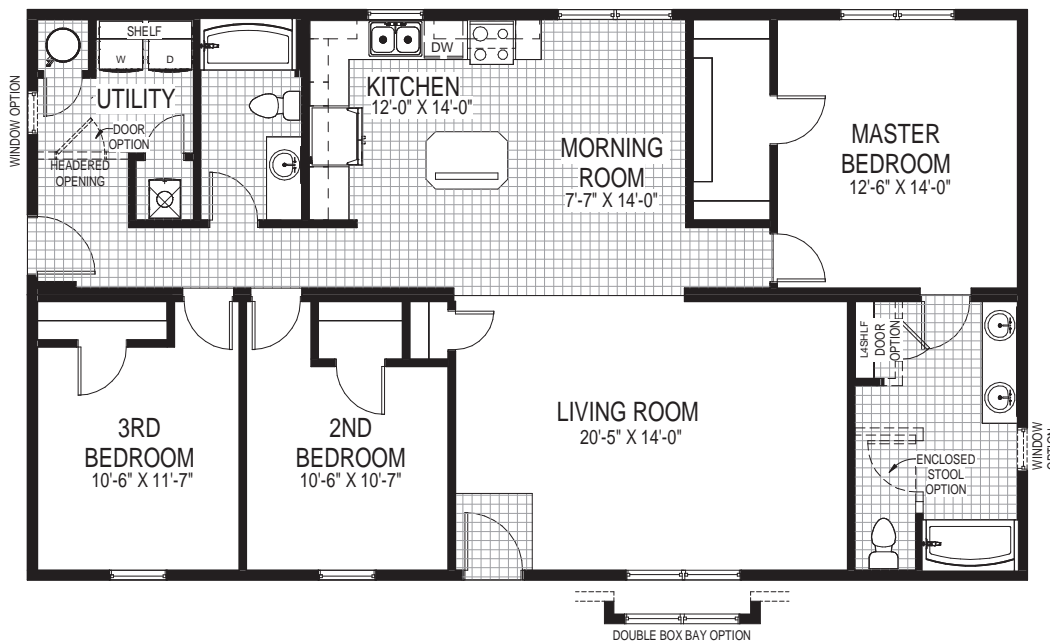




# Cedar

1543 Sq. Ft.  
29'8" x 52'0"

SLIDING GLASS DOOR OPTION

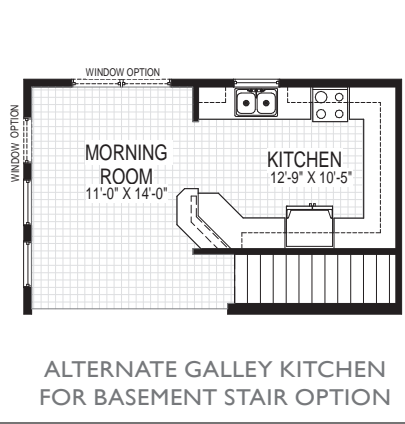
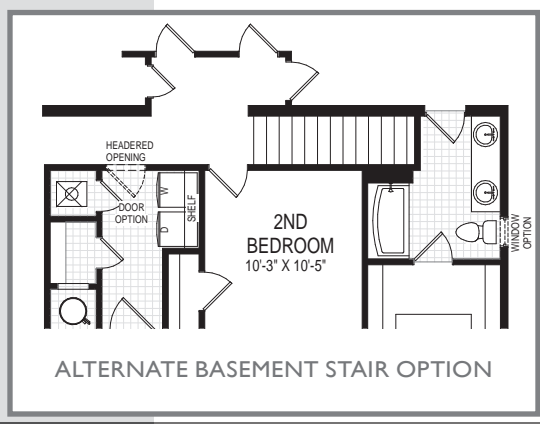
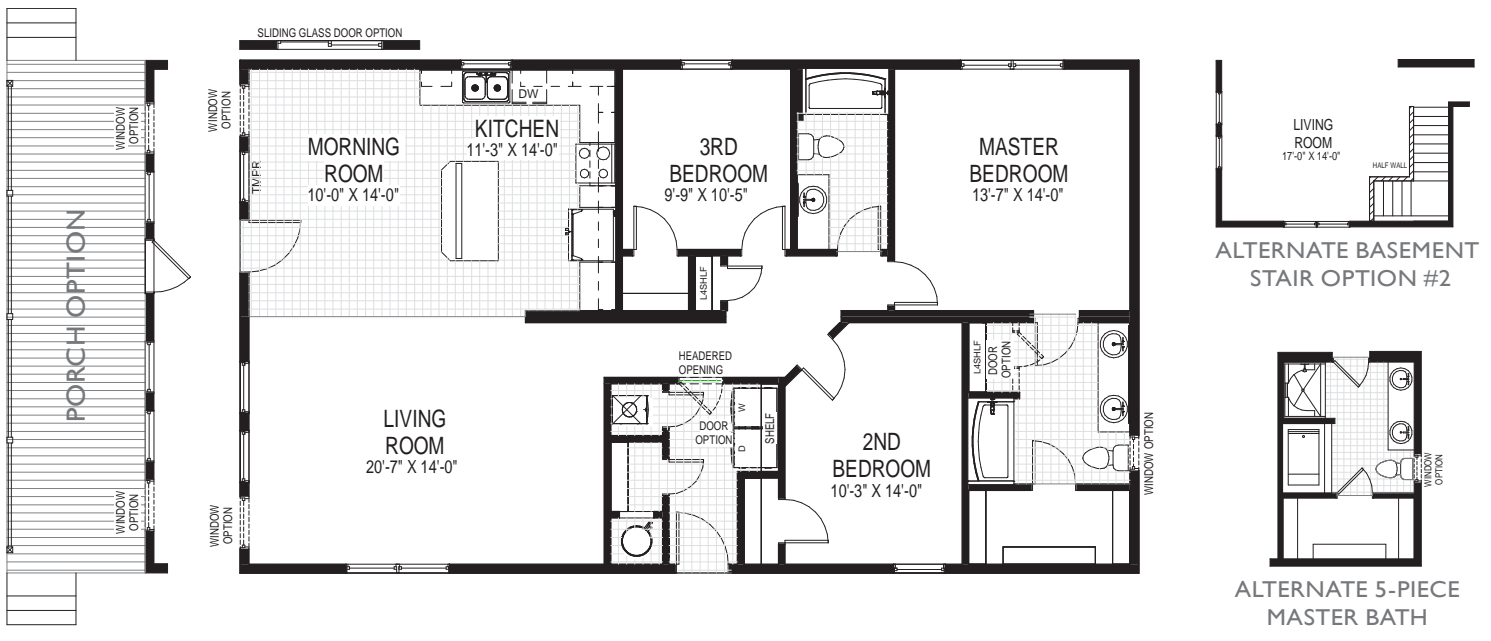


One of the most popular efficient floor plans, the Cedar offers large living room space. The expansive master bedroom gives way to a master bathroom suite, with options to upgrade to a 5 piece or Monogram bath to suit your individual style.



# Chestnut

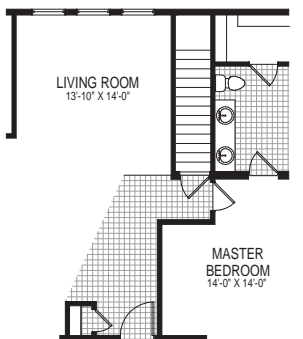
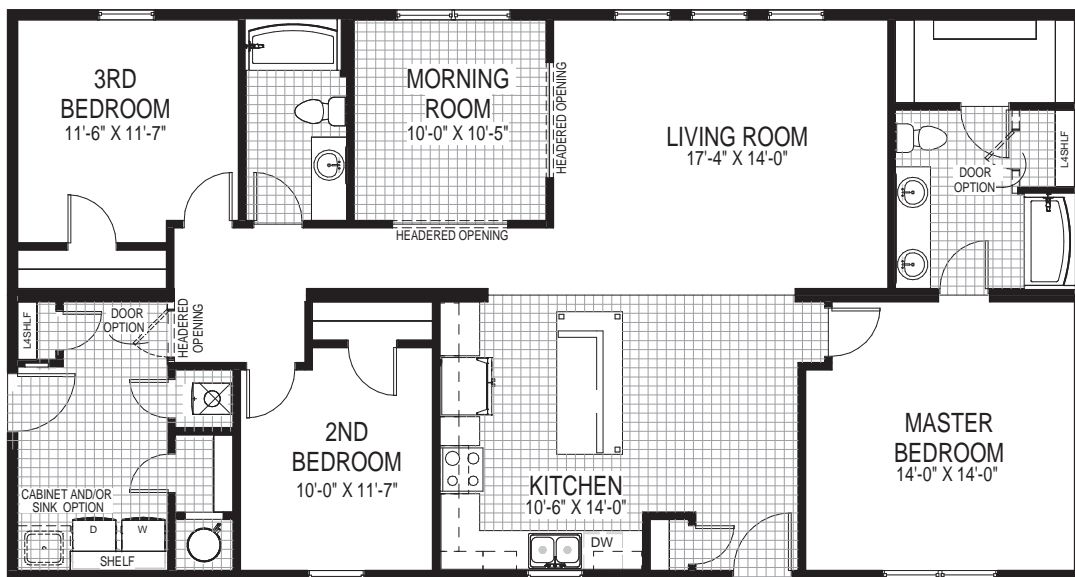
1543 Sq. Ft.  
29'8" x 52'0"



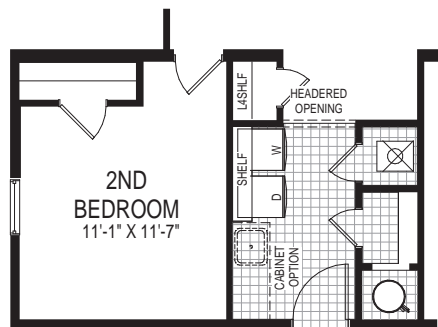


# Colorado

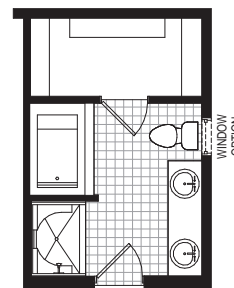
1661 Sq. Ft.  
29'8" x 56'0"



ALTERNATE  
BASEMENT STAIR OPTION



ALTERNATE FRONT  
GARAGE LAYOUT



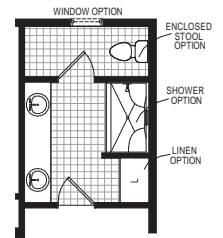
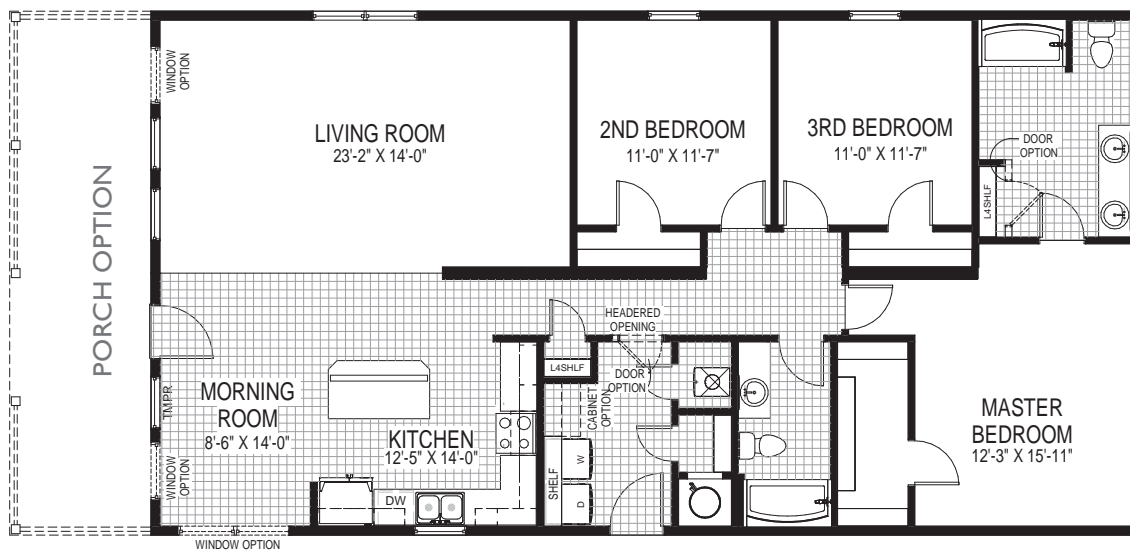
ALTERNATE 5-PIECE  
MASTER BATH

If you're looking for a home with a large living room with views to your backyard, the Colorado is a great plan. With a large utility room, separate morning room, and kitchen with eat-in island, this home packs a lot of amenities within its footprint. Add a garage to the front side of the home to fit more efficiently on a site.

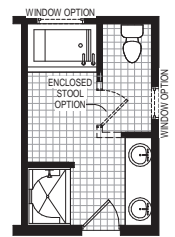


# Glenwood

1661 Sq. Ft.  
29'8" x 56'0"



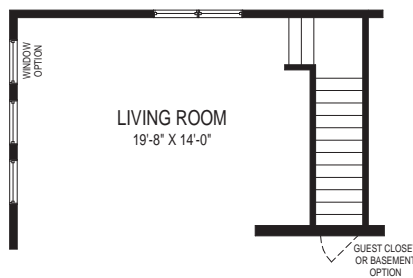
ALTERNATE MASTER BATH  
W/ ENLARGED VANITY



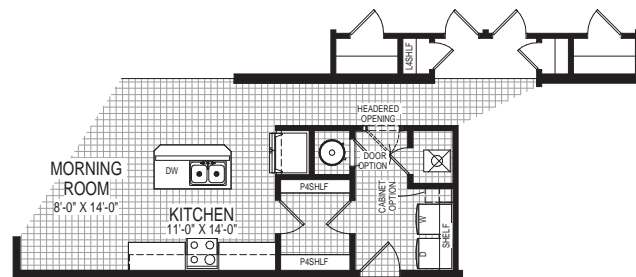
ALTERNATE 5-PIECE  
MASTER BATH



ALTERNATE BASEMENT  
STAIR OPTION



ALTERNATE CAPE COD  
STAIR OPTION

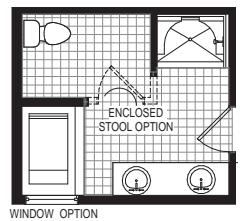
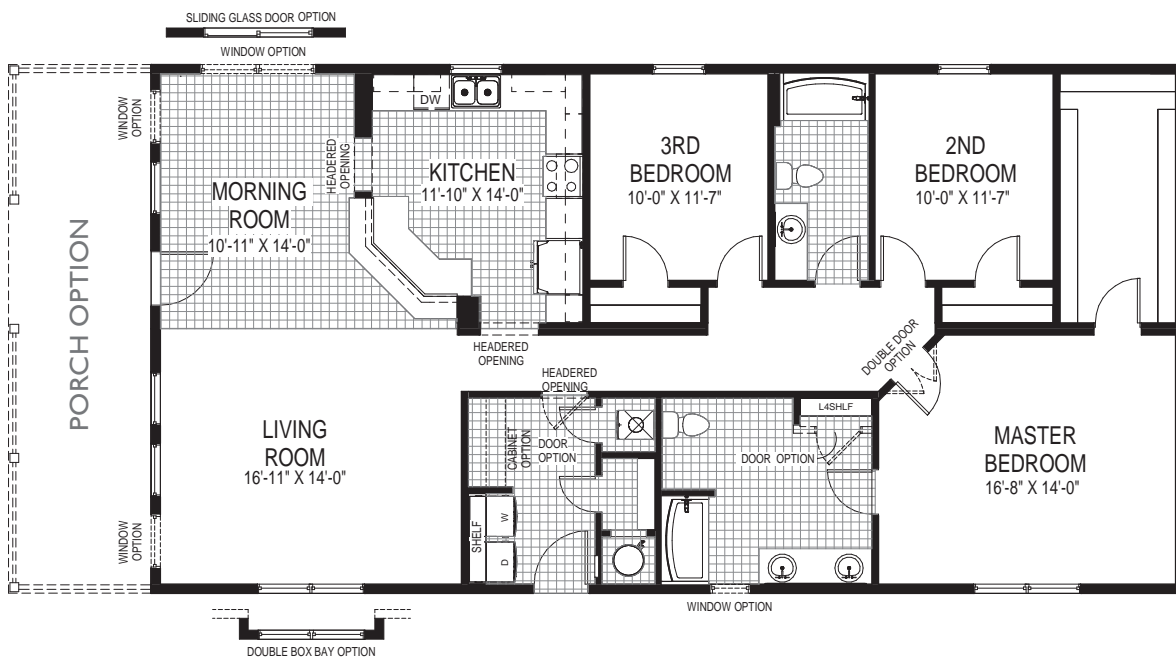


ALTERNATE KITCHEN W/ WALK  
THROUGH PANTRY

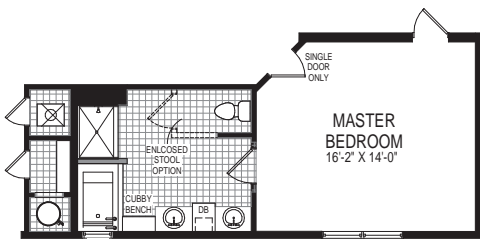


# Cypress

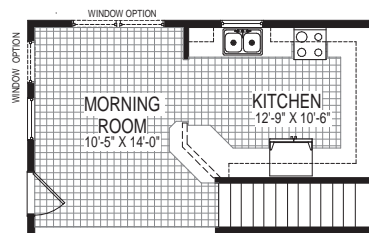
1721 Sq. Ft.  
29'8" x 58'0"



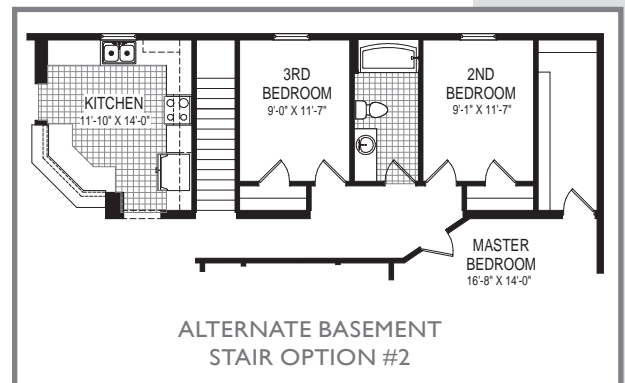
ALTERNATE 5-PIECE  
MASTER BATH



ALTERNATE  
MONOGRAM BATH



ALTERNATE GALLEY KITCHEN  
FOR STAIR OPTION

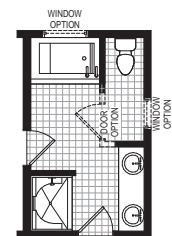
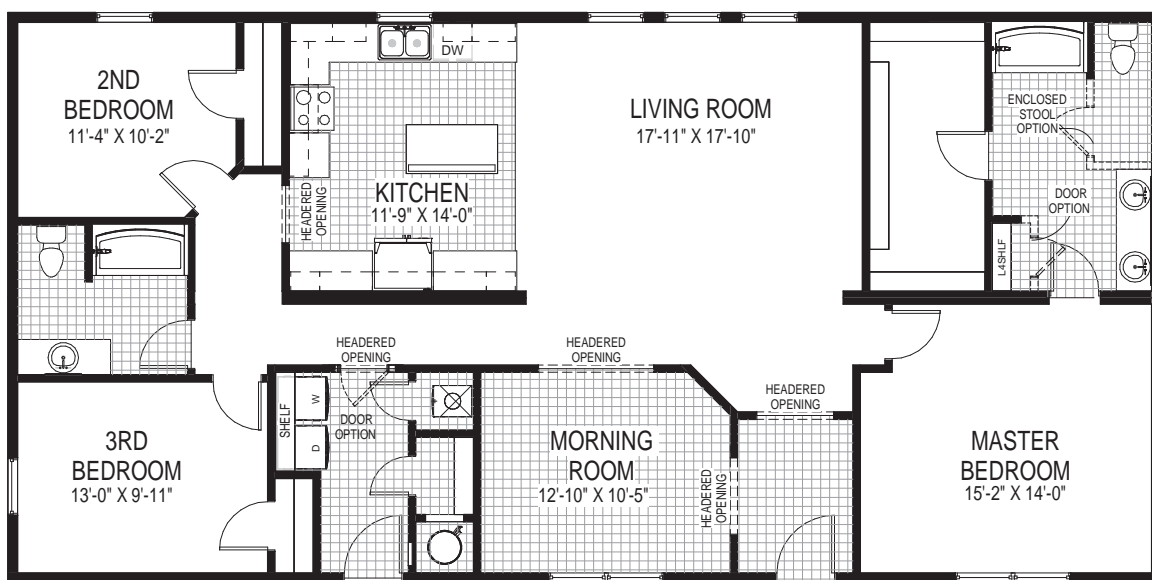


ALTERNATE BASEMENT  
STAIR OPTION #2

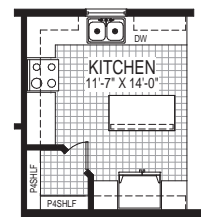


# Halford

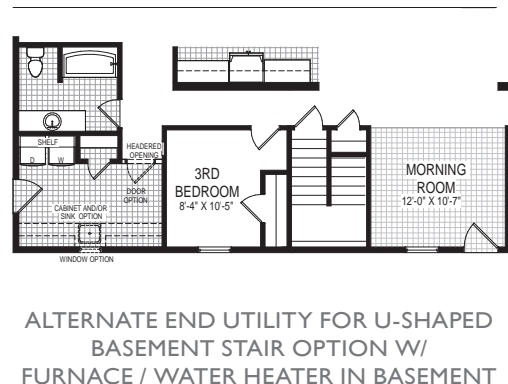
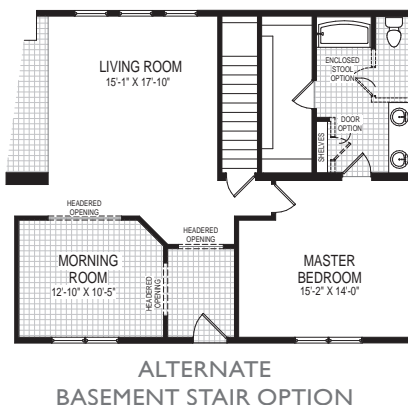
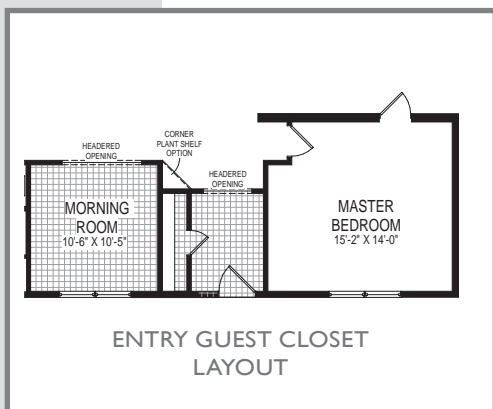
1780 Sq. Ft.  
29'8" x 60'0"



ALTERNATE 5-PIECE MASTER BATH



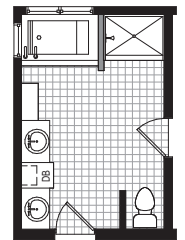
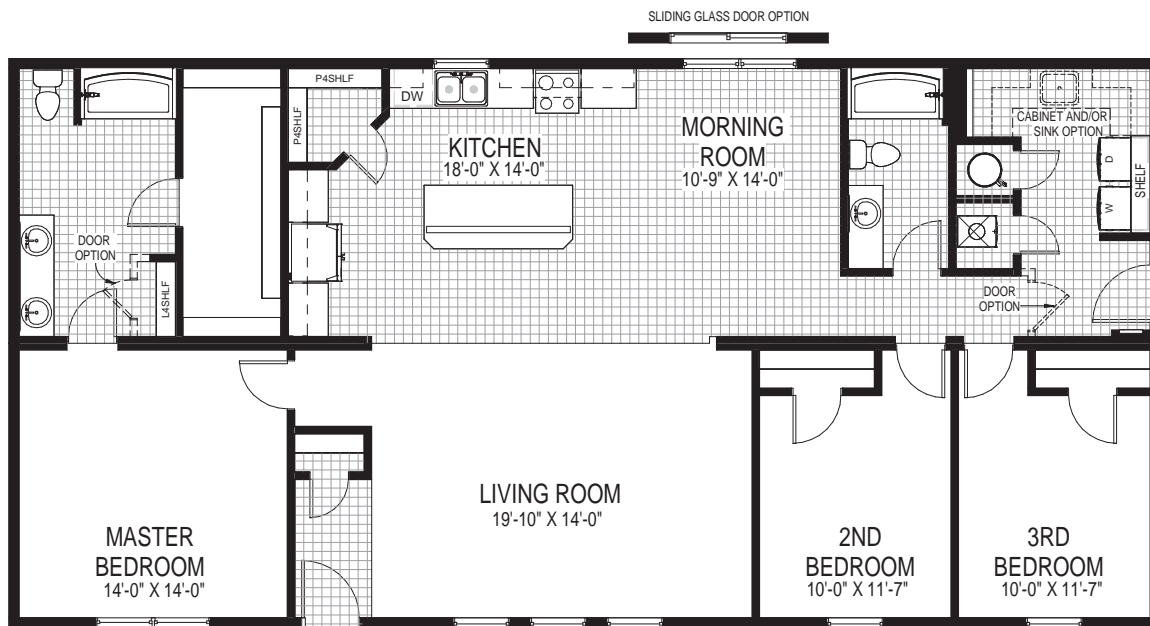
ALTERNATE KITCHEN W/ CORNER PANTRY



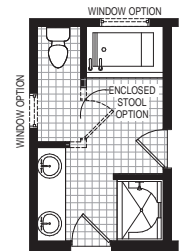


# Hazel

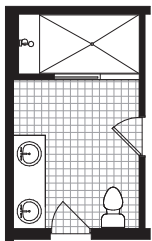
1780 Sq. Ft.  
29'8" x 60'0"



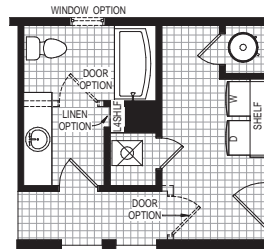
ALTERNATE  
MONOGRAM BATH



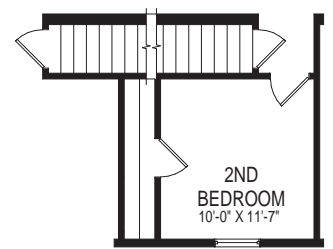
ALTERNATE 5-PIECE  
MASTER BATH



ALTERNATE  
GRAND SHOWER  
OPTION



ALTERNATE FAMILY BATH  
MAIN BATH

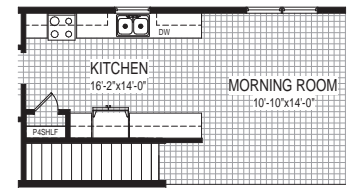
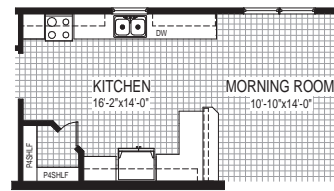
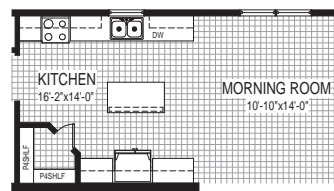
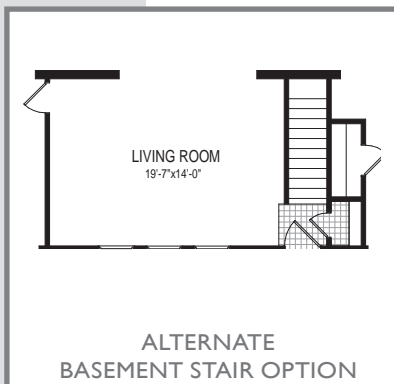
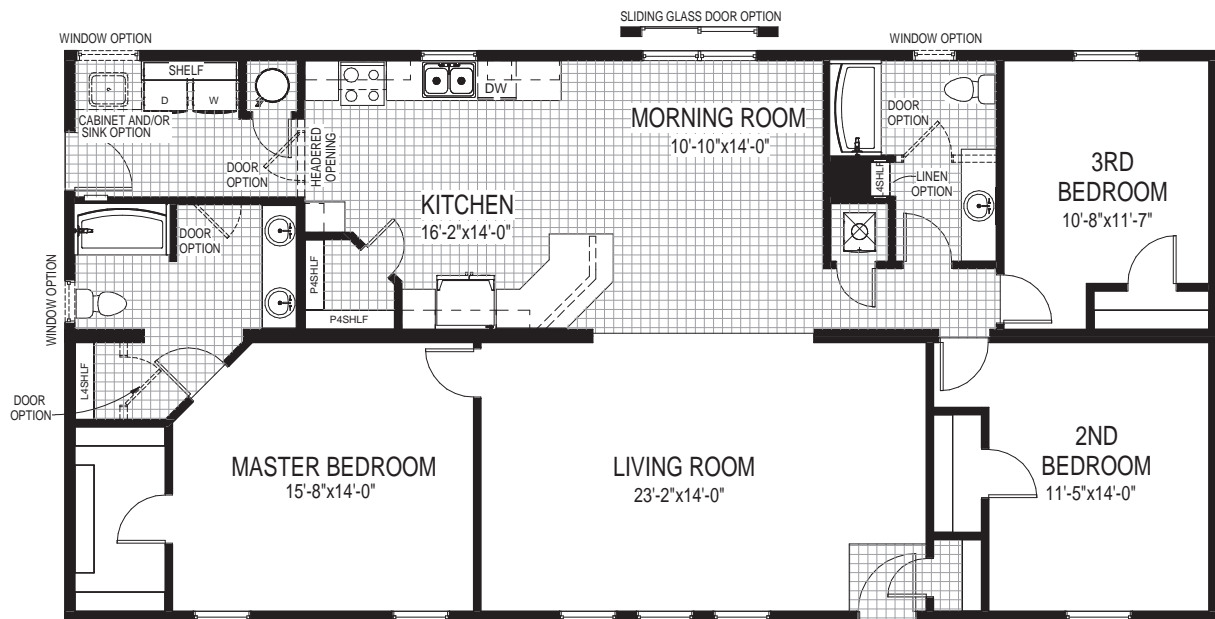


ALTERNATE CAPE COD AND/OR  
BASEMENT STAIR OPTION



# Oleander

1780 Sq. Ft.  
29'8" x 60'0"

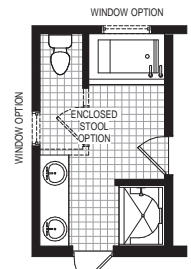
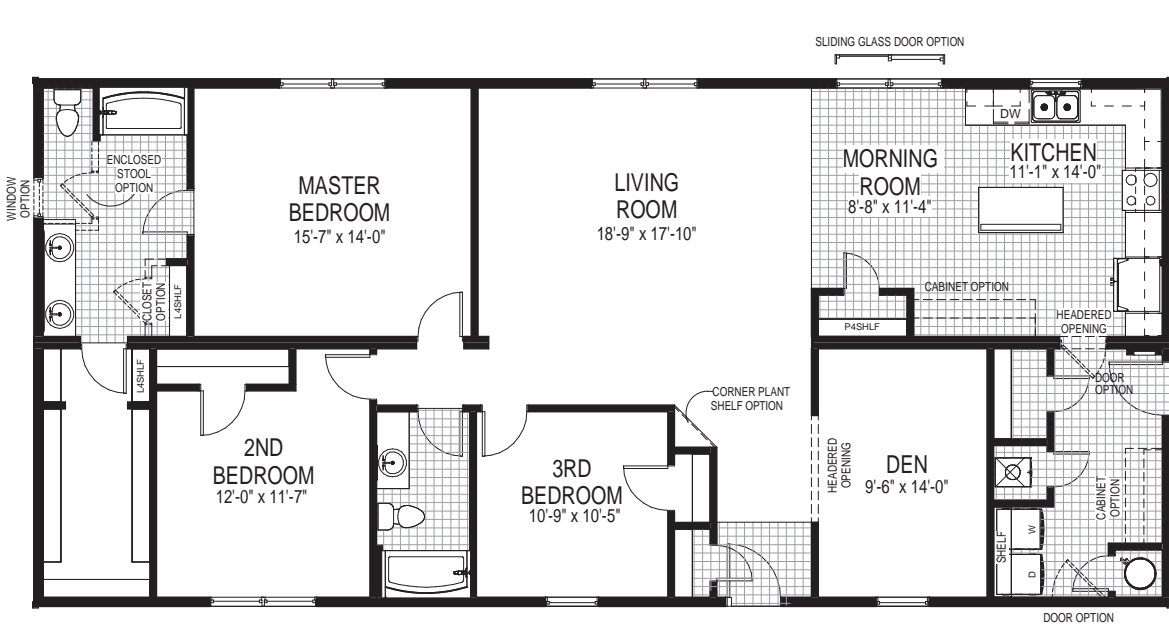




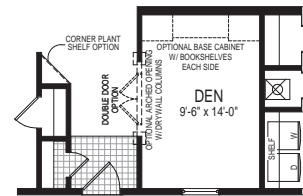


# Joshua

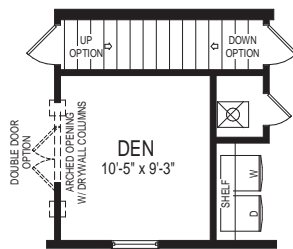
1899 Sq. Ft.  
29'8" x 64'0"



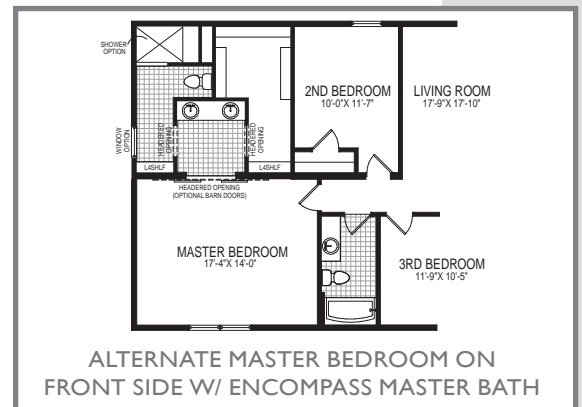
ALTERNATE 5-PIECE MASTER BATH



ALTERNATE DEN OPTIONS



CAPE COD / BASEMENT STAIR OPTION

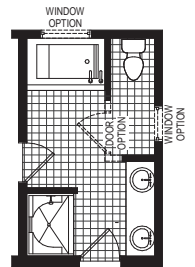
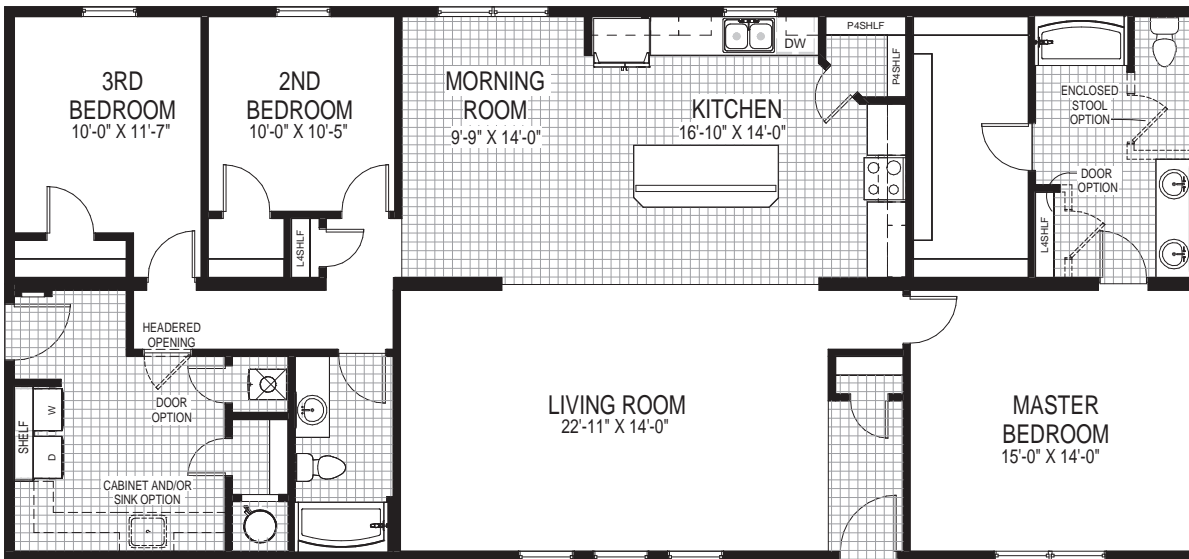


ALTERNATE MASTER BEDROOM ON FRONT SIDE W/ ENCOMPASS MASTER BATH

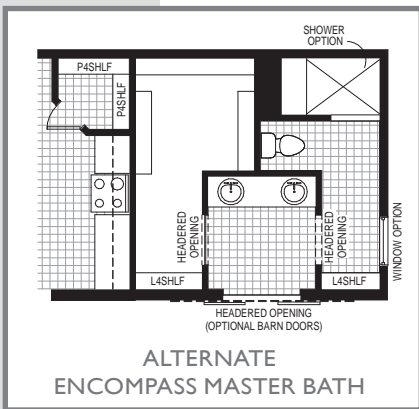


# Hawthorne

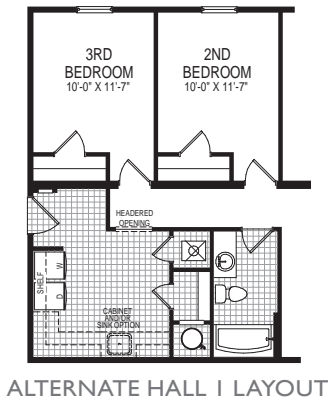
1899 Sq. Ft.  
29'8" x 64'0"



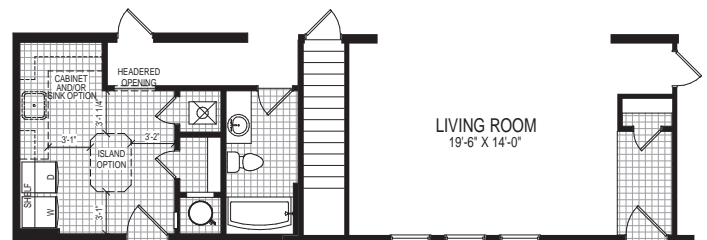
ALTERNATE 5-PIECE MASTER BATH



ALTERNATE ENCOMPASS MASTER BATH



ALTERNATE HALL I LAYOUT



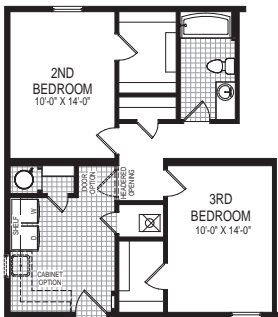
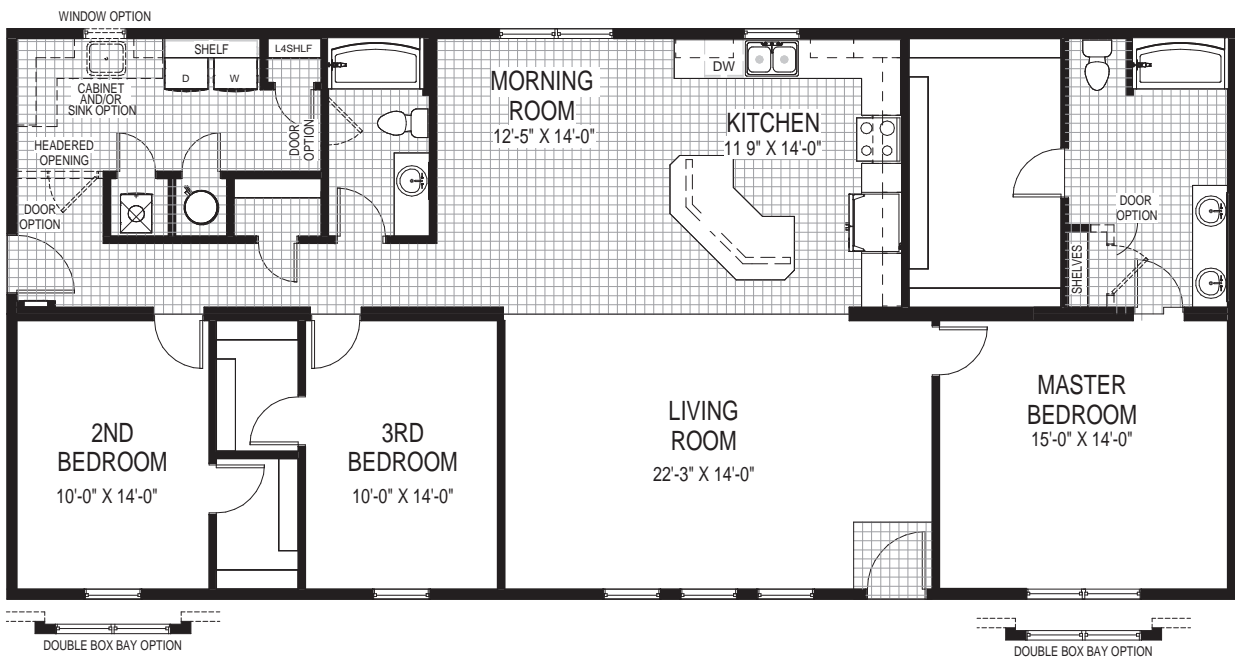
ALTERNATE FRONT GARAGE LAYOUT

ALTERNATE BASEMENT STAIR OPTION

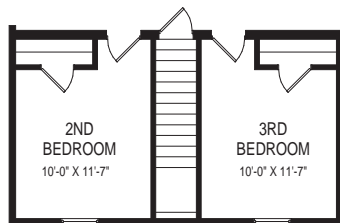


# Ironwood

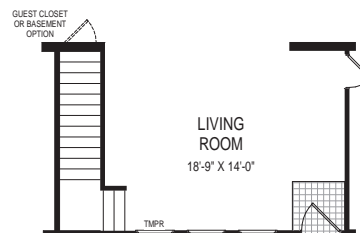
1899 Sq. Ft.  
29'8" x 64'0"



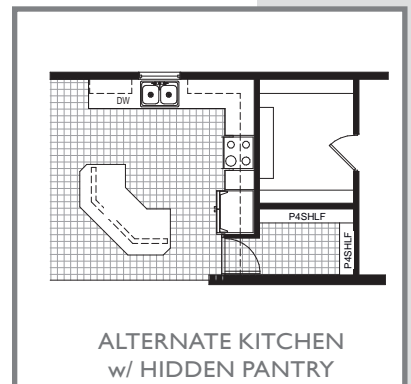
ALTERNATE FRONT GARAGE LAYOUT



ALTERNATE BASEMENT STAIR OPTION



ALTERNATE CAPE COD STAIR

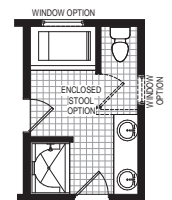
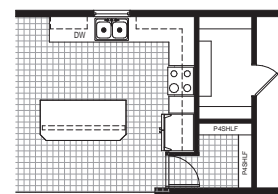
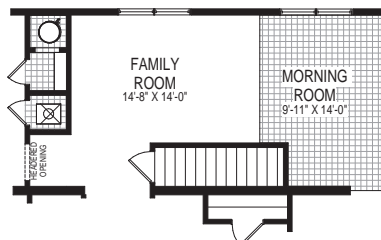
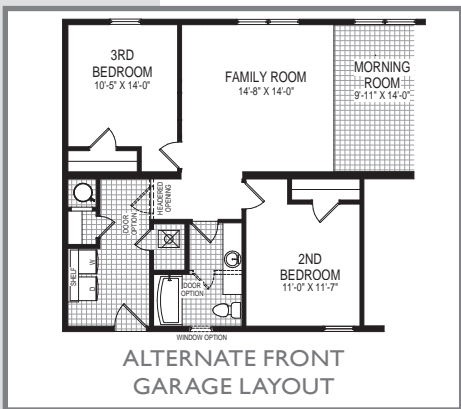
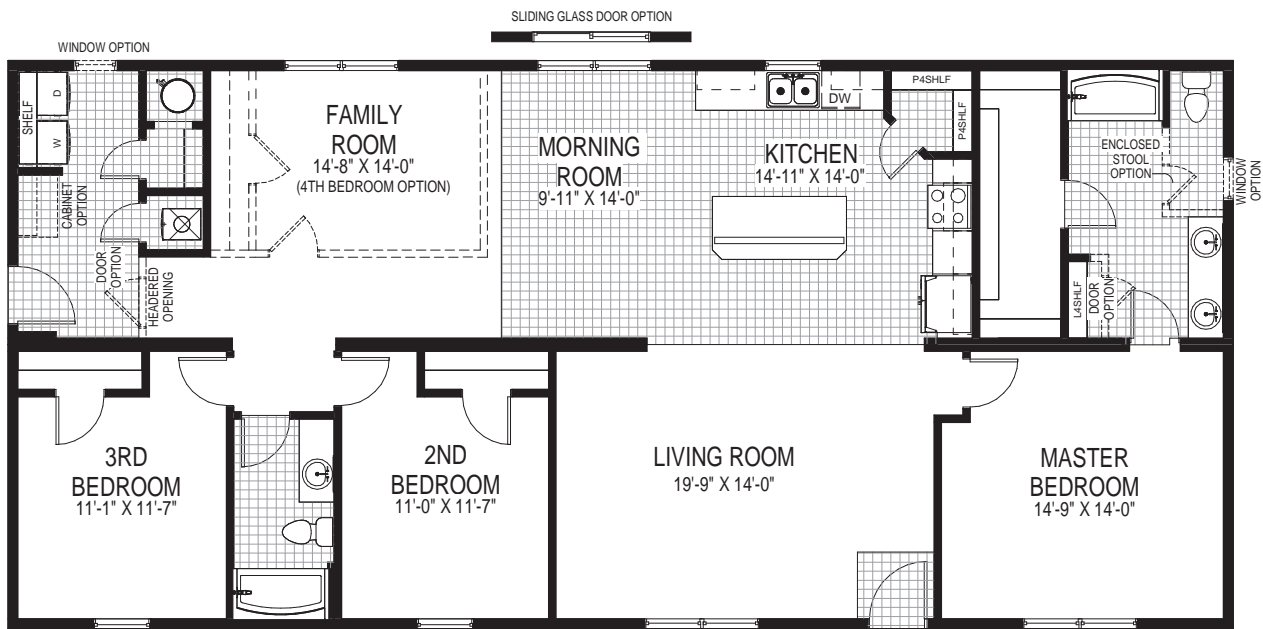


ALTERNATE KITCHEN w/ HIDDEN PANTRY



# Juniper

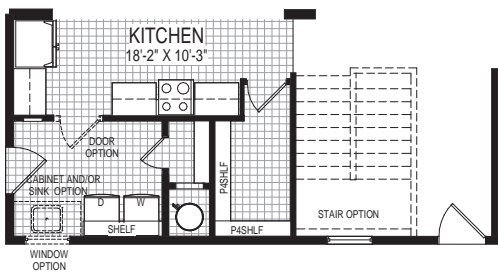
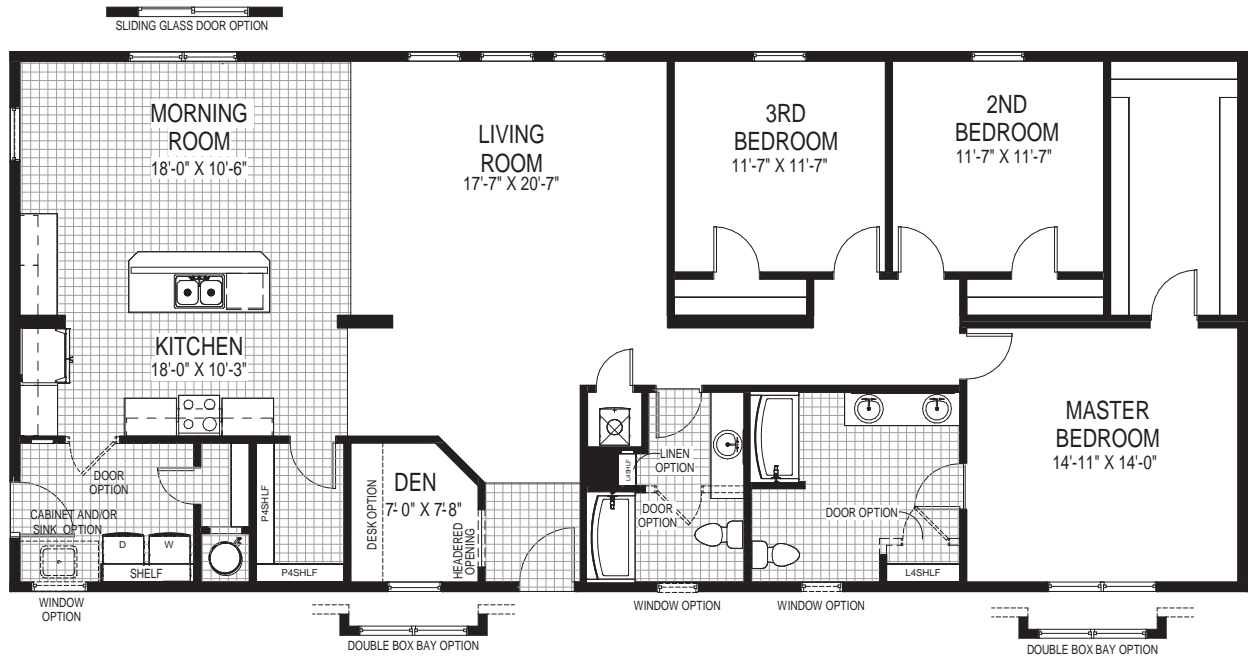
1899 Sq. Ft.  
29'8" x 64'0"



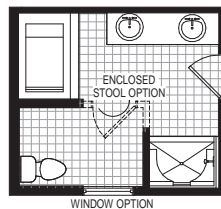


# Jersey

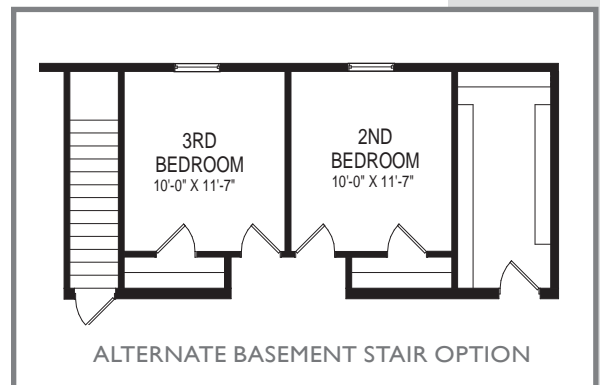
2017 Sq. Ft.  
29'8" x 68'0"



HIDDEN PANTRY  
W/ U-SHAPED STAIR OPTION



ALTERNATE 5-PIECE  
MASTER BATH

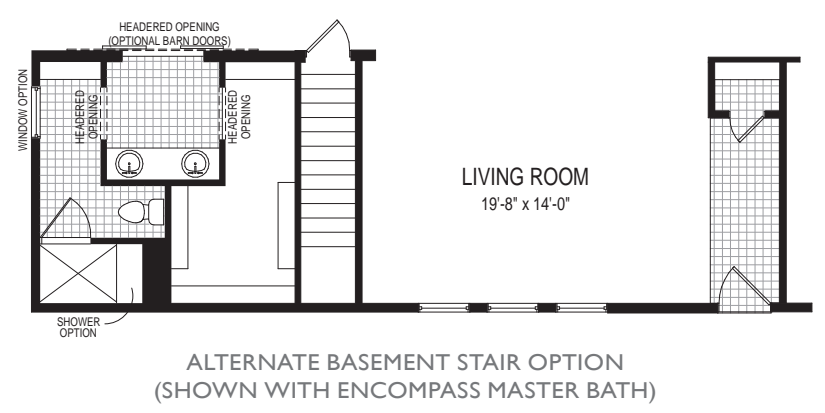
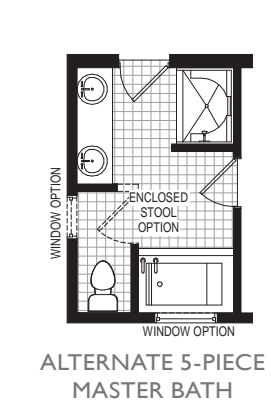
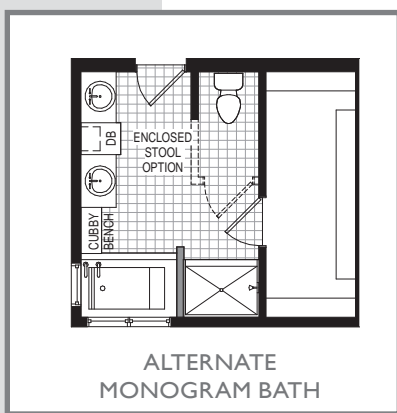
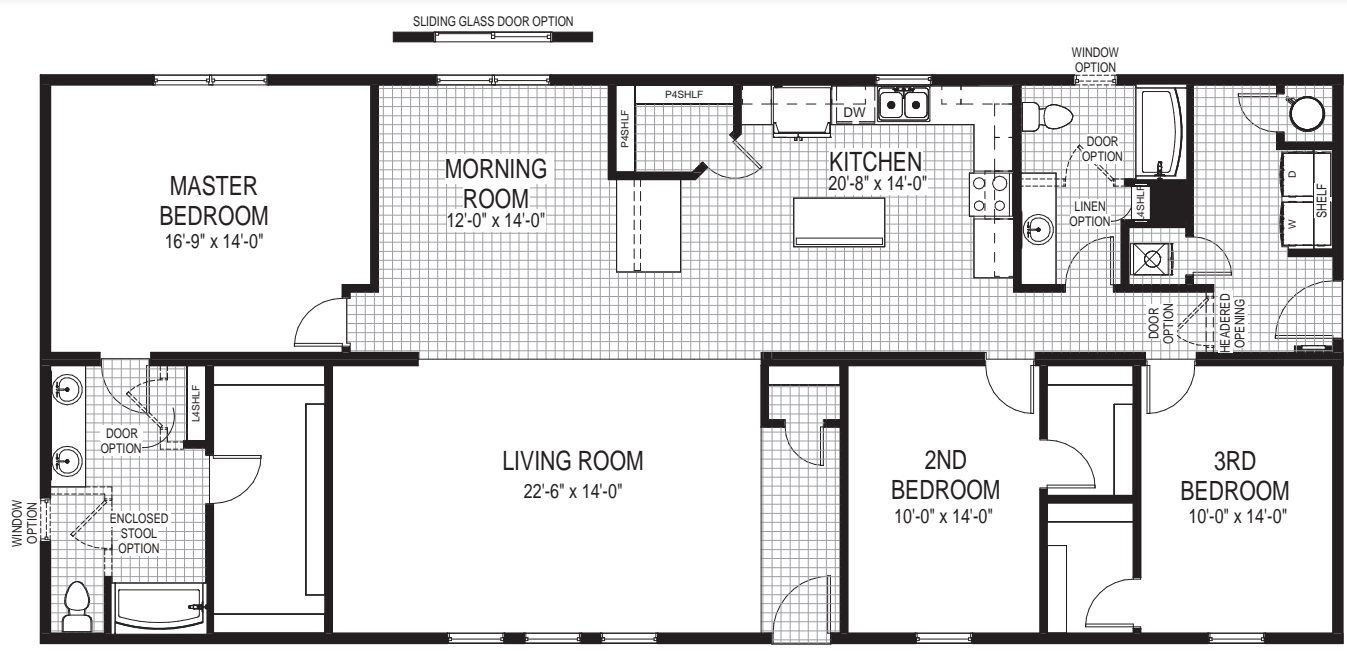


ALTERNATE BASEMENT STAIR OPTION



# Poplar

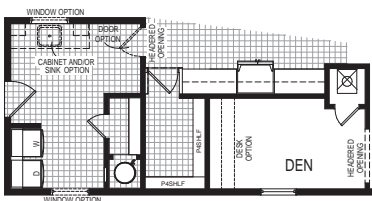
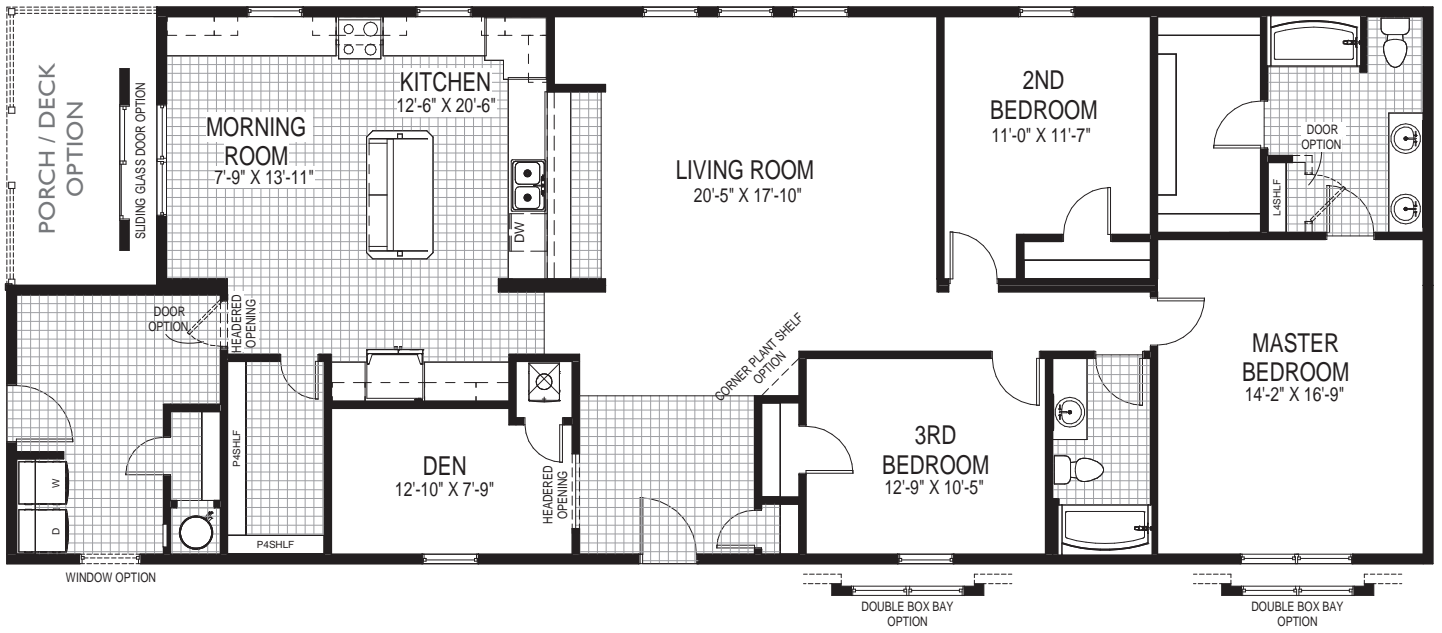
2017 Sq. Ft.  
29'8" x 68'0"



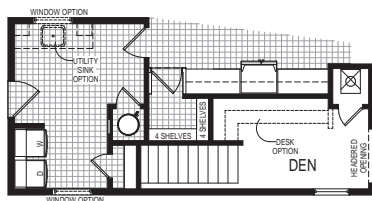


# Sycamore

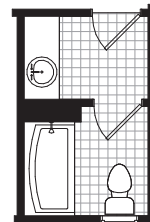
2136 Sq. Ft.  
29'8" x 68'0"/76'0"



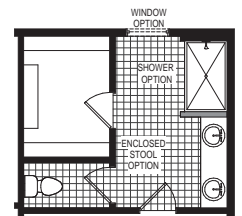
HIDDEN PANTRY OPTION



HIDDEN PANTRY / ALTERNATE FOR BASEMENT STAIR OPTION



ALTERNATE MAIN BATH OPTION

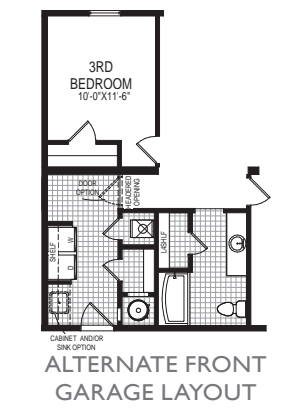
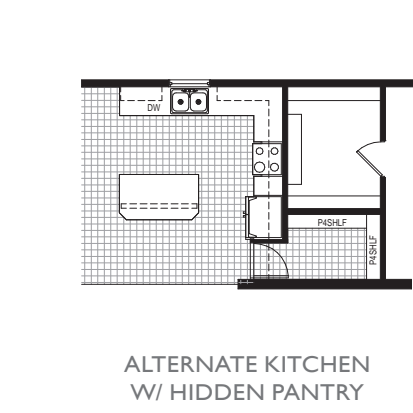
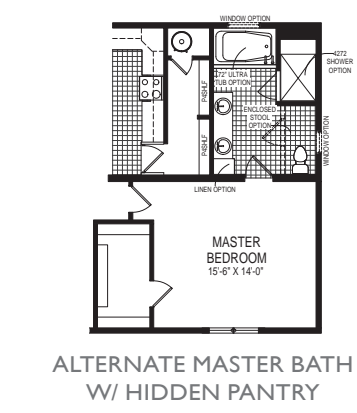
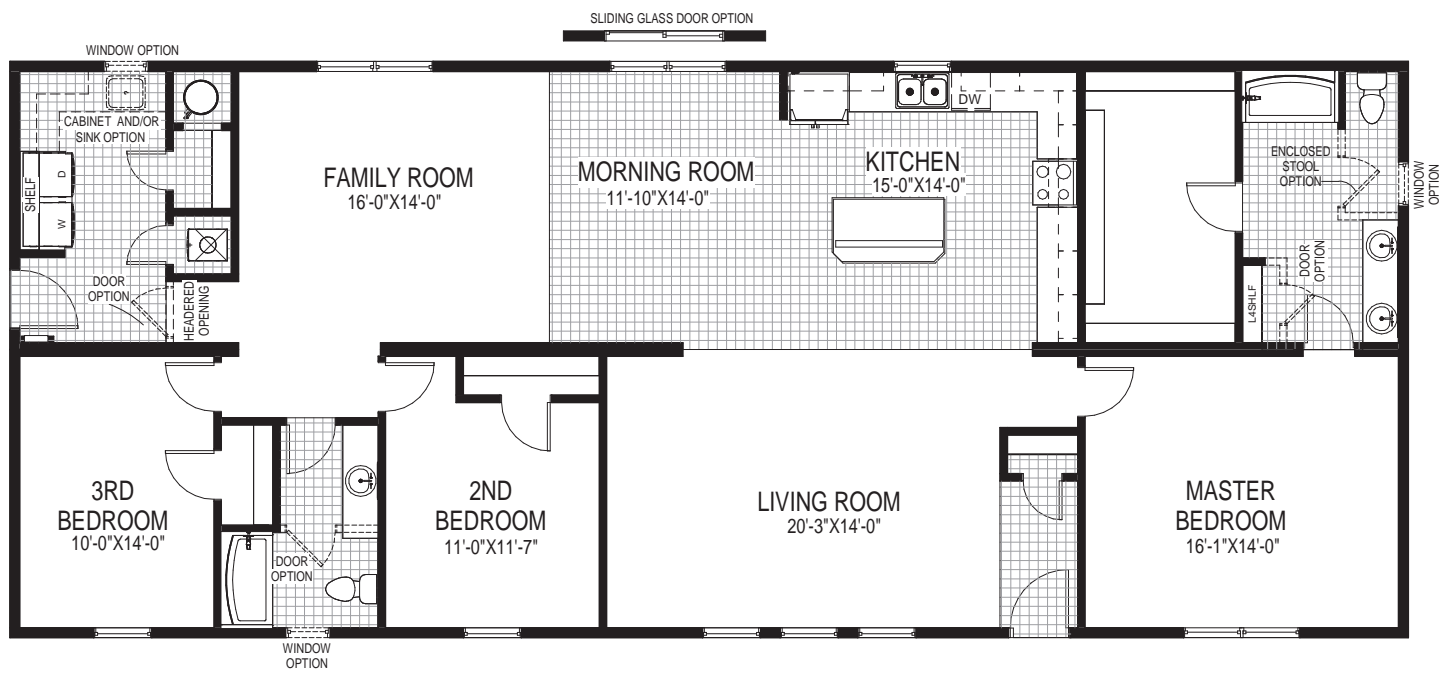


ALTERNATE MASTER BATH OPTION



# Redwood

2136 Sq. Ft.  
29'8" x 72'0"

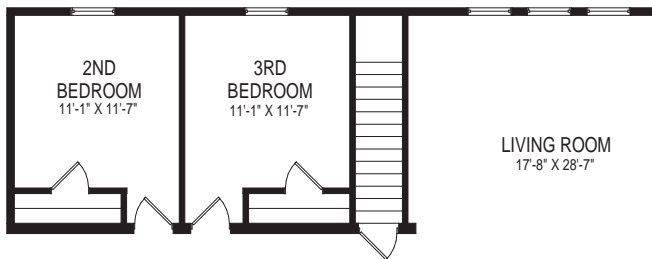
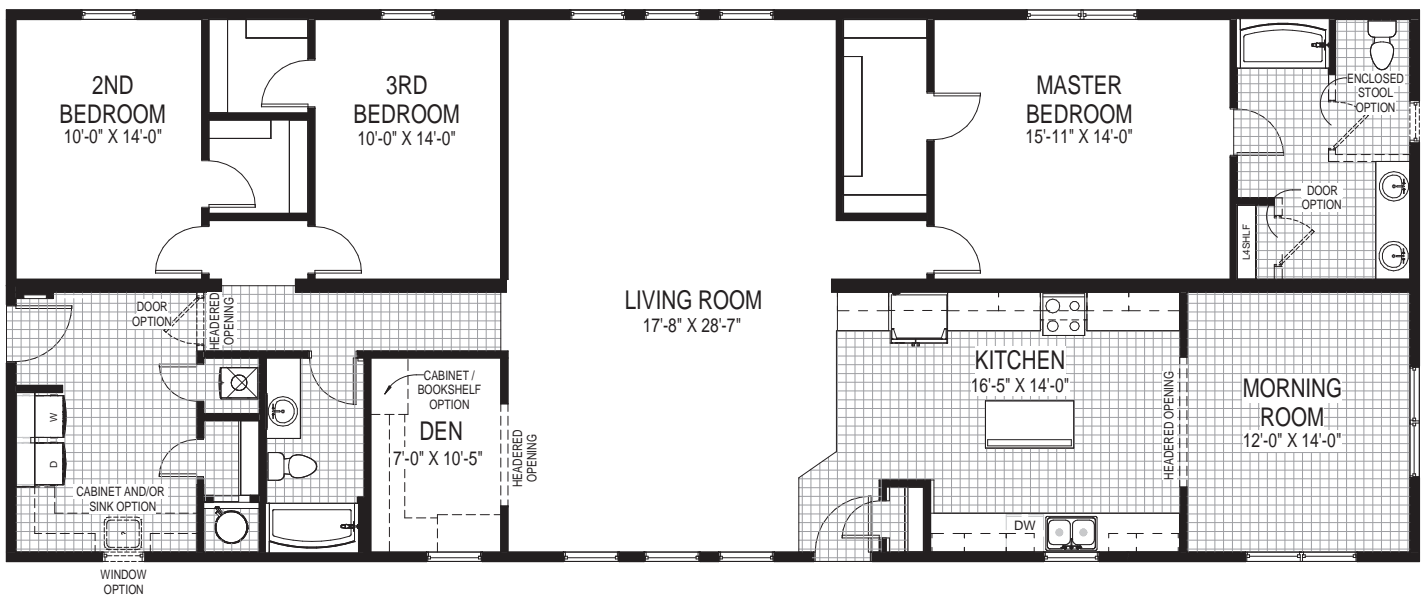




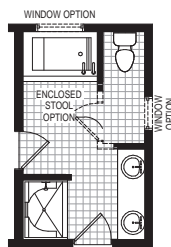


# Red Oak

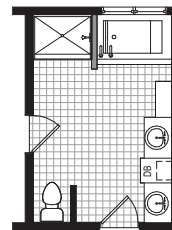
2255 Sq. Ft.  
29'8" x 76'0"



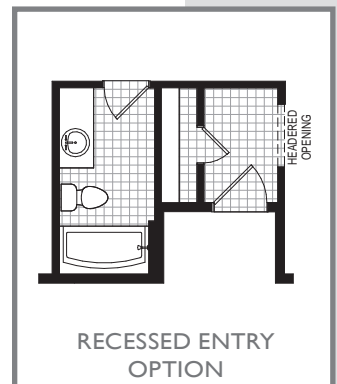
ALTERNATE BASEMENT  
STAIR OPTION



ALTERNATE 5-PIECE  
MASTER BATH



ALTERNATE  
MONOGRAM BATH

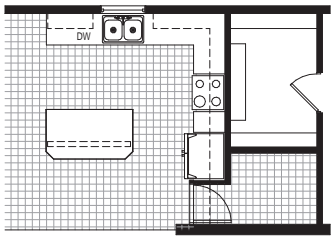
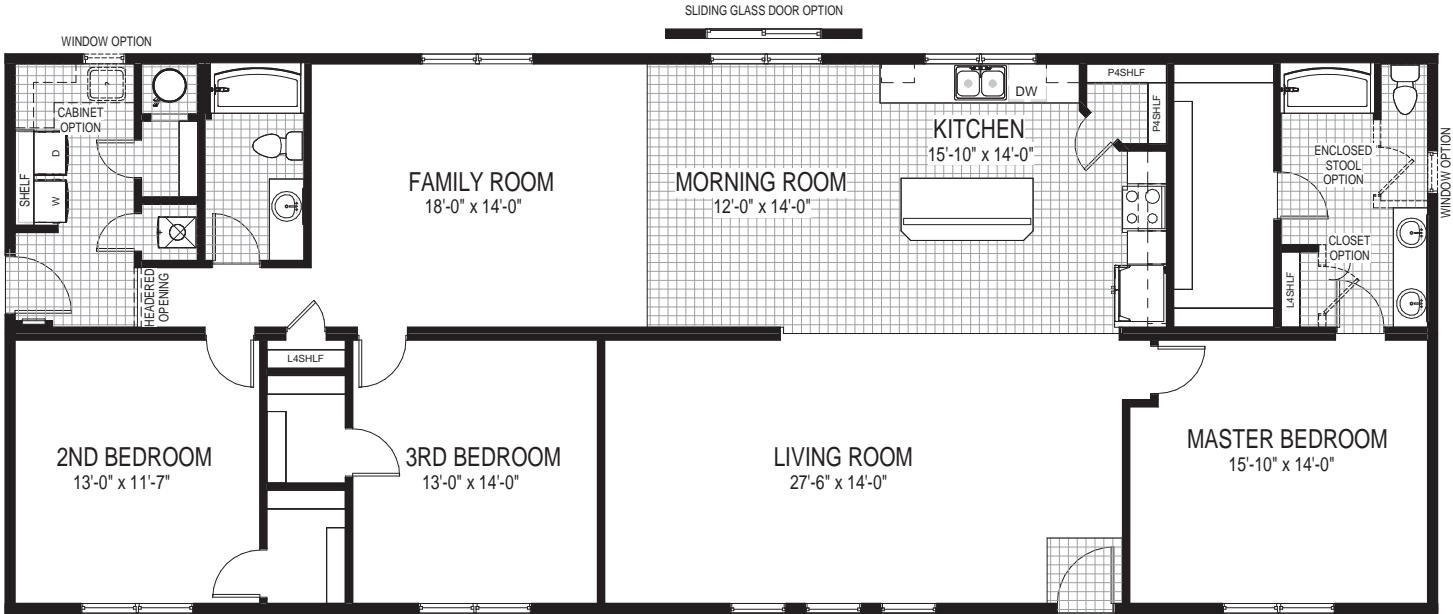


RECESSED ENTRY  
OPTION

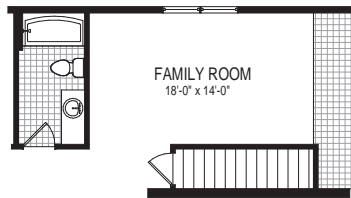


# Sequoia

2255 Sq. Ft.  
29'8" x 76'0"



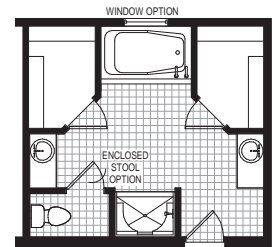
ALTERNATE KITCHEN  
W/ HIDDEN PANTRY



ALTERNATE BASEMENT  
STAIR OPTION



ALTERNATE BASEMENT  
STAIR OPTION #2

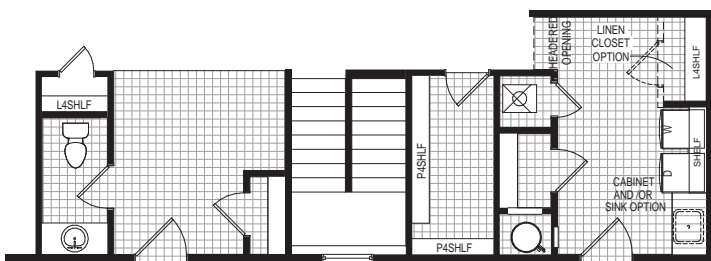
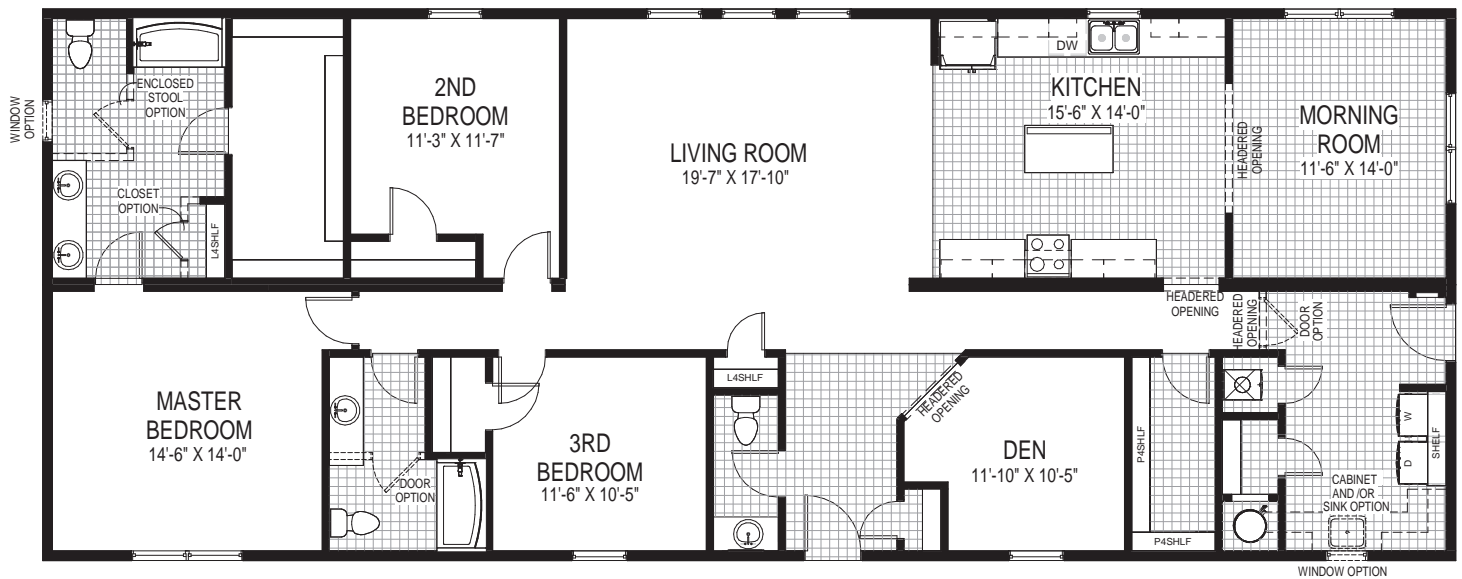


ALTERNATE 5-PIECE MASTER  
BATH W/ 2 SEPARATE VANITIES

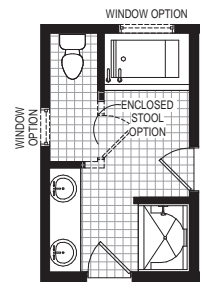


# Silver Oak

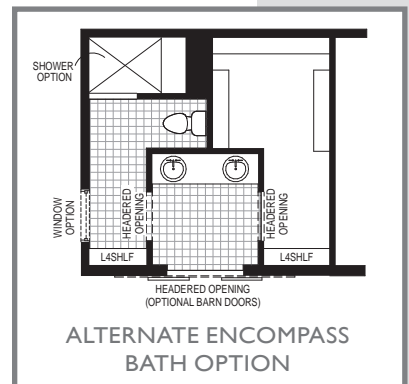
2255 Sq. Ft.  
29'8" x 76'0"



ALTERNATE FRONT GARAGE  
W/ U-SHAPED STAIR OPTION



ALTERNATE 5-PIECE  
MASTER BATH

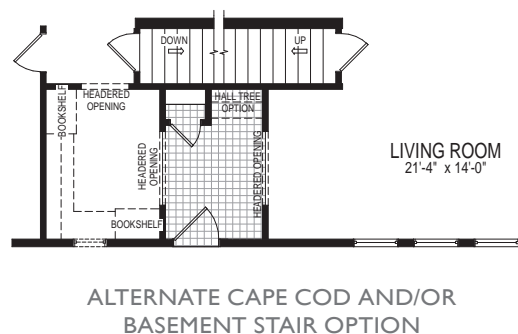
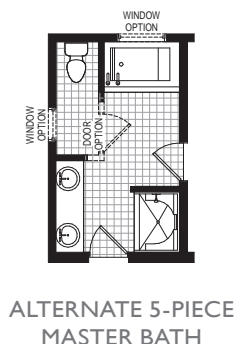
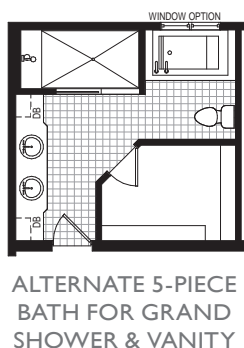
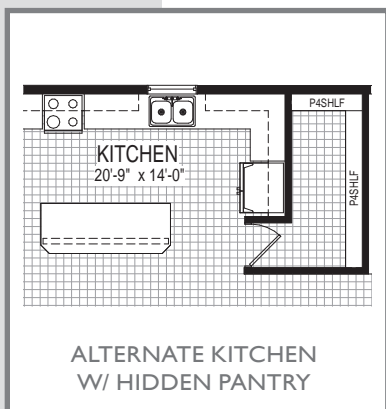
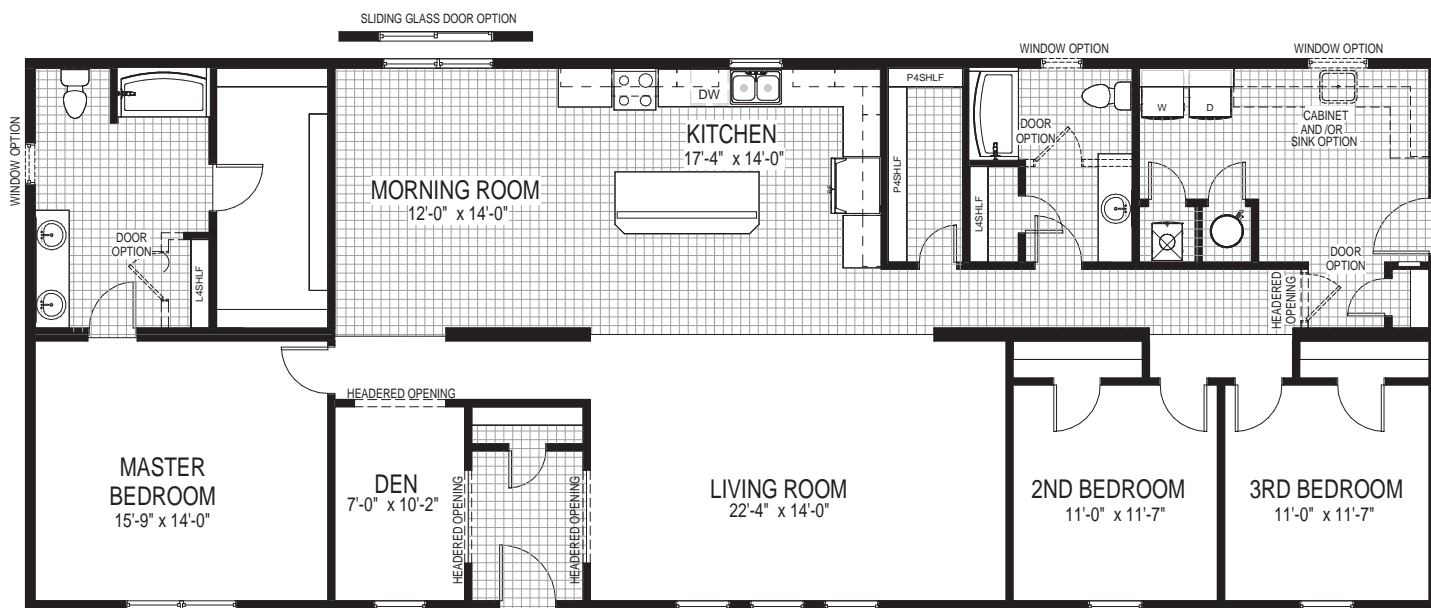


ALTERNATE ENCOMPASS  
BATH OPTION



# Sugarberry

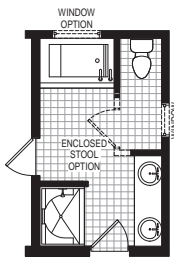
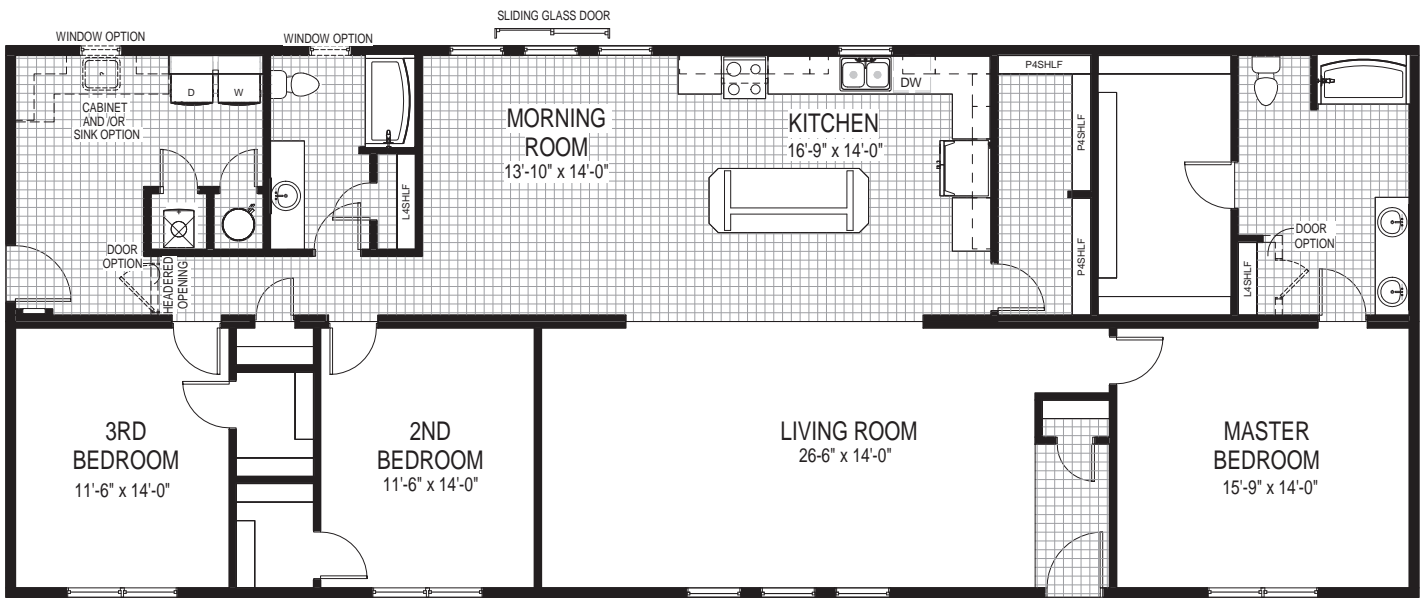
2255 Sq. Ft.  
29'8" x 76'0"



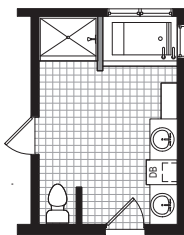


# Tamarack

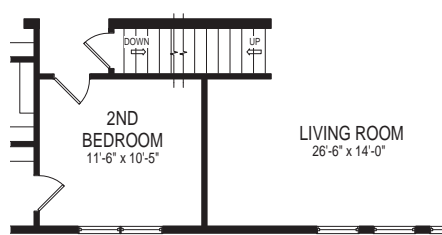
2255 Sq. Ft.  
29'8" x 76'0"



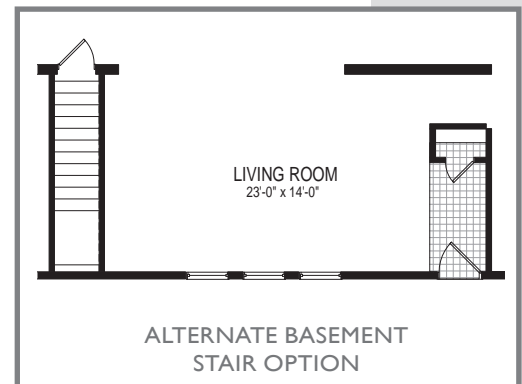
ALTERNATE 5-PIECE  
MASTER BATH



ALTERNATE  
MONOGRAM BATH



ALTERNATE CAPE COD AND/OR  
BASEMENT STAIR OPTION



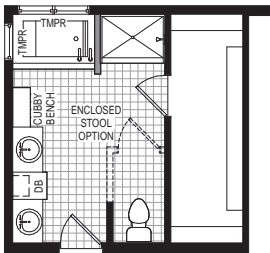
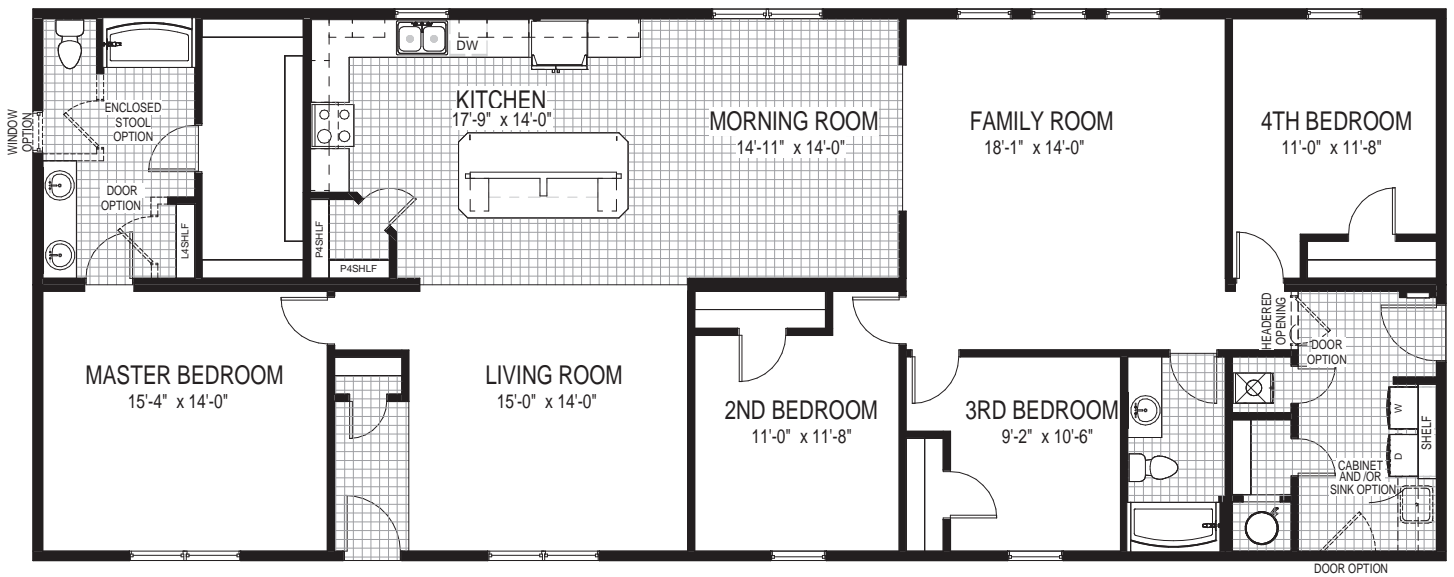
ALTERNATE BASEMENT  
STAIR OPTION



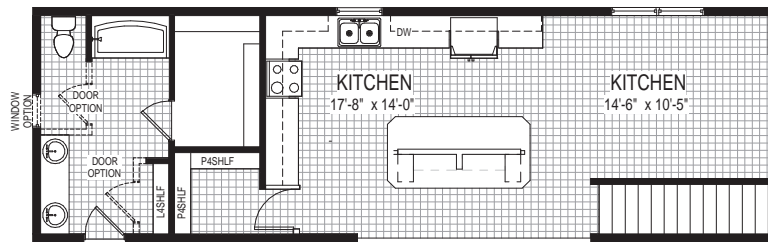
# Willow

2255 Sq. Ft.  
29'8" x 76'0"

SLIDING GLASS DOOR OPTION



ALTERNATE  
MONOGRAM BATH



ALTERNATE BASEMENT STAIR OPTION #1  
AND ALTERNATE KITCHEN W/ HIDDEN PANTRY

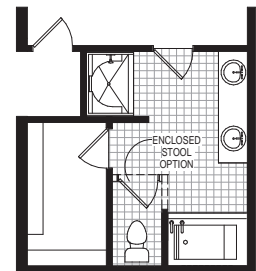
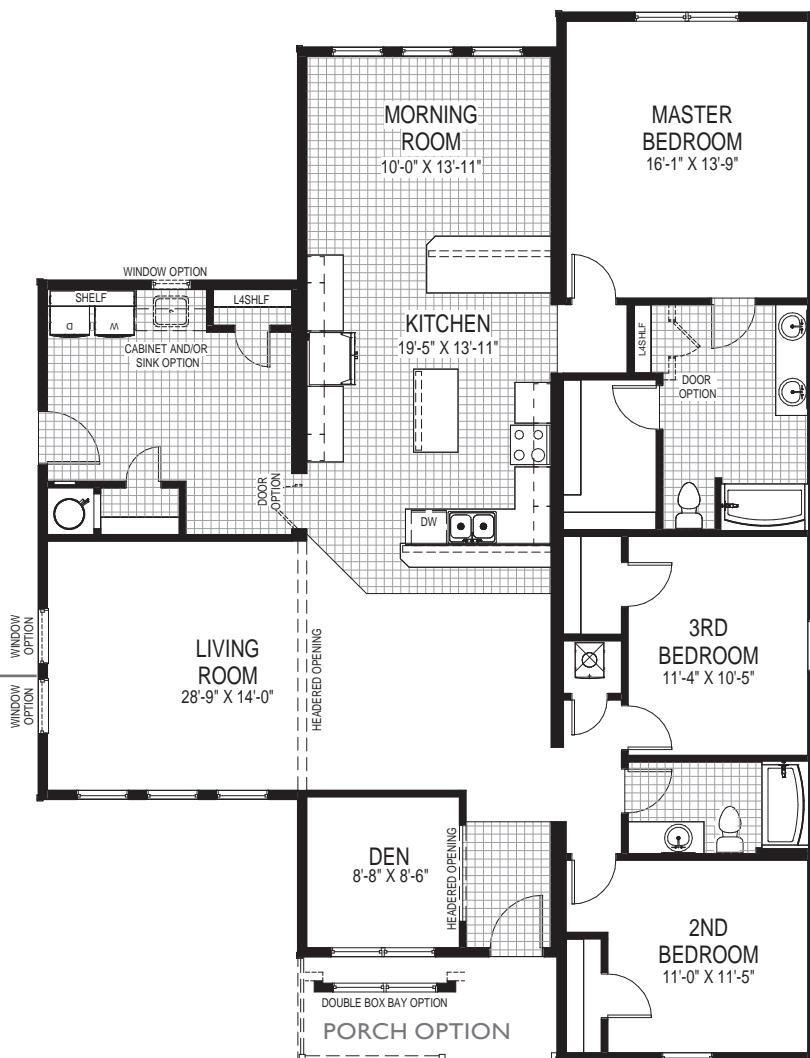


ALTERNATE BASEMENT  
STAIR OPTION #2

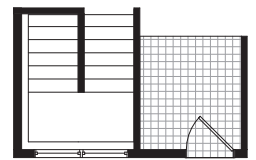


# Hamilton

2101 Sq. Ft.  
44'6" x 60'0"



ALTERNATE 5-PIECE MASTER BATH



ALTERNATE U-SHAPED BASEMENT STAIR OPTION

The Hamilton floor plan is built on 3 frames and is a perfect solution for an open concept floor plan. With a large kitchen, grand master suite and private den off of the main entry, this home can meet your needs and more. If you want to put this home on a basement, the stairs can fit perfectly off the front entry.

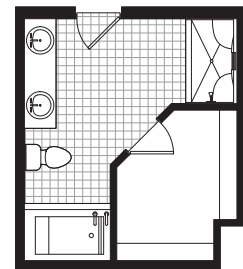


# Harlan

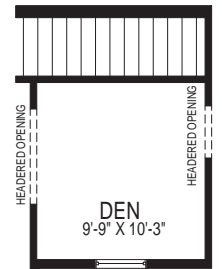
2339 Sq. Ft.  
44'6" x 64'0"



The Harlan is a 3 frame unit with an open floor plan, large bedrooms, and a utility room with half bath off of the kitchen. With an included front porch, this home has much to offer!



ALTERNATE 5-PIECE MASTER BATH



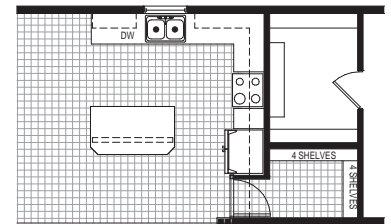
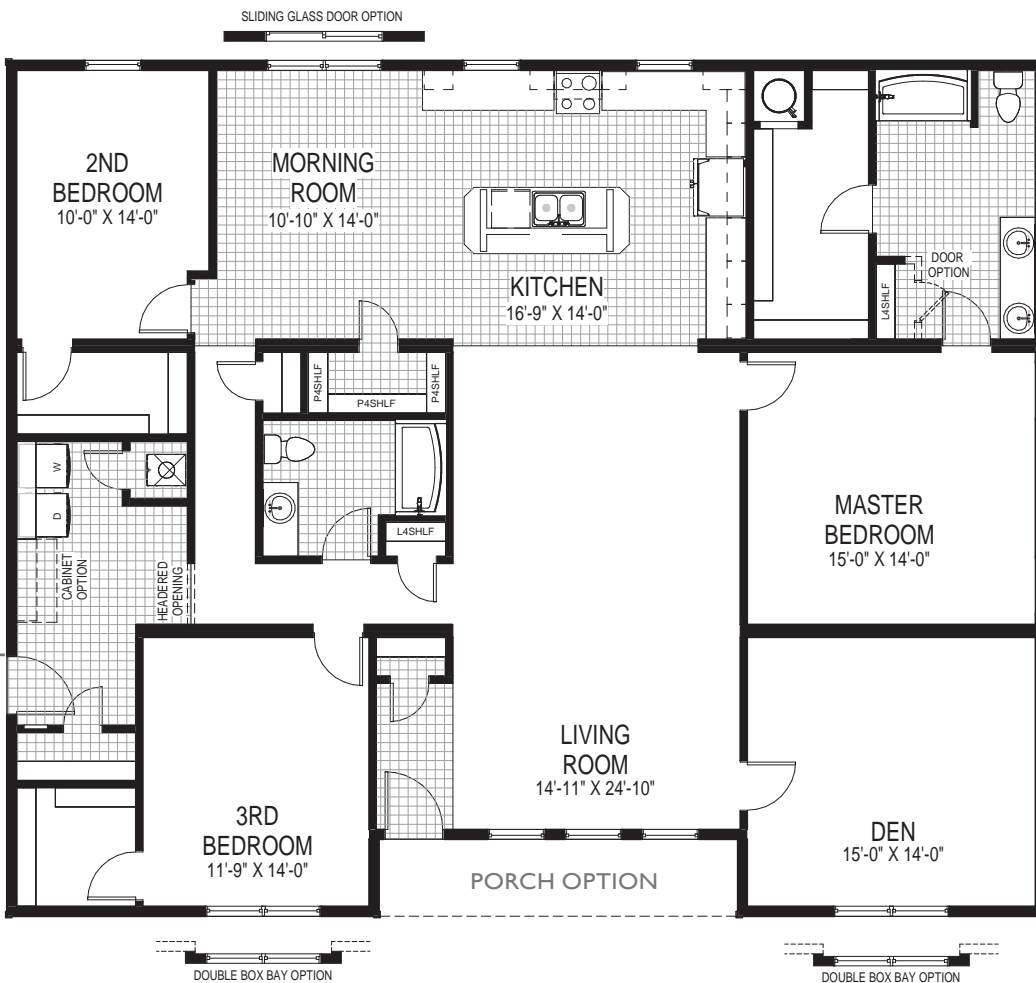
ALTERNATE BASEMENT STAIR OPTION



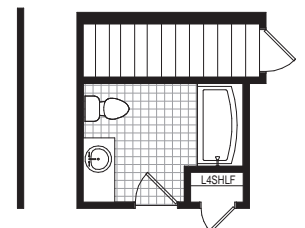


# Calamus

2328 Sq. Ft.  
44'6" x 54'0"



ALTERNATE KITCHEN  
W/ HIDDEN PANTRY



ALTERNATE BASEMENT  
STAIR OPTION



ALTERNATE 5-PIECE  
MASTER BATH

## DURABLE ROOF & CEILING

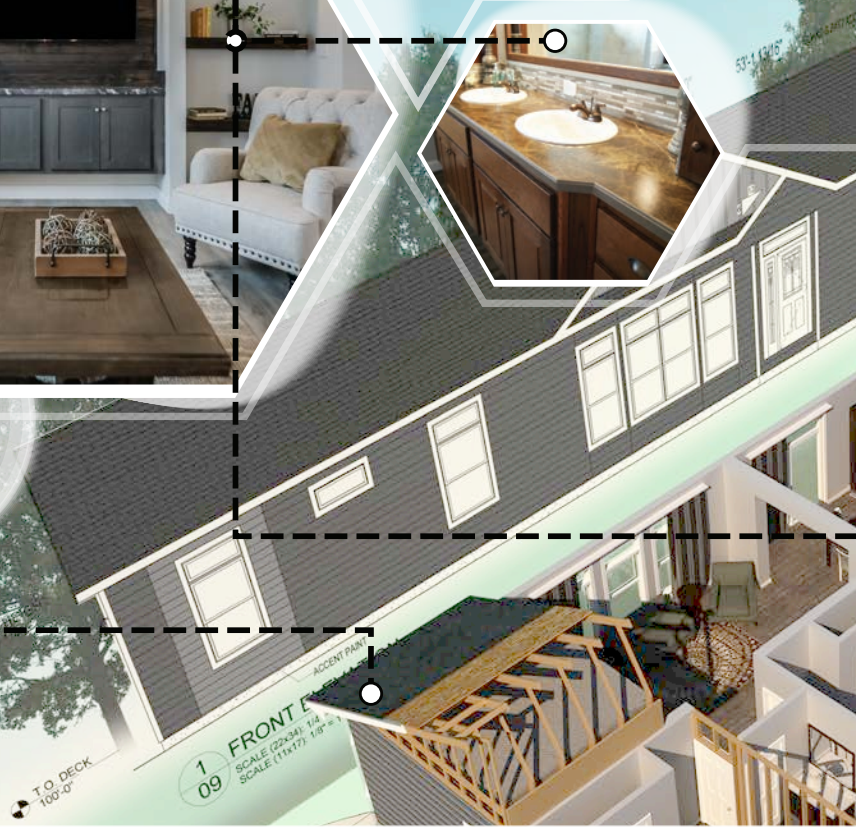
5/8" Drywall Ceilings  
 Engineered Roof Trusses  
 Energy Efficient Blown Insulation  
 Complete Seal of All Protrusions  
 7/12 Attic Storage & 9/12 Cape Roofs



## INTERIOR CHOICES



## GARAGE - READY PLANS



T.O. DECK  
100' 0"

1 09 FRONT E  
SCALE (22'x34) 1/4"  
SCALE (11'x17) 1/8"



## SIGNATURE CABINETS

1/2" Side Panel Box Construction, Dadoed, Glued, & Fastened Wood, Dadoed Corner Supports  
 Machine Fabricated Cabinet Components  
 Wood Drawer Box Construction  
 100 lb. Rated, Hidden Metal Drawer Glides  
 Solid Hardwood 3/4" Face Frames and Styles - Pocket Screwed  
 3/4" Wood Shelf Stock  
 Drawer over Door Kitchen Base Cabinet



# CHIEF INDUSTRIES

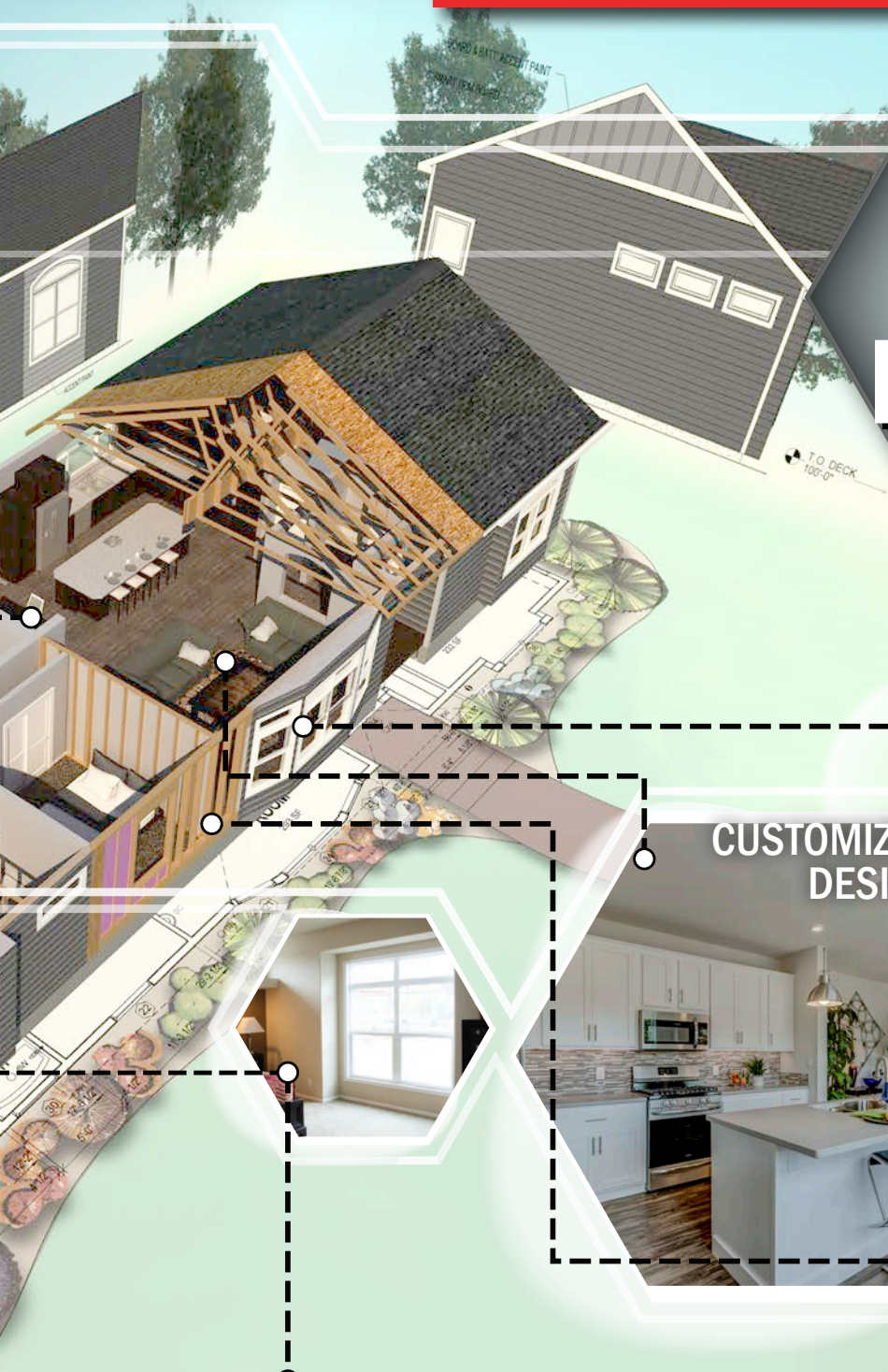
Trusted. Tested. True.



# BONNAVILLA®

A DIVISION OF CHIEF INDUSTRIES, INC.

## DETAILS MAKE THE DIFFERENCE



**FLEXIBLE  
EXTERIORS**



**CUSTOMIZED  
DESIGNS**



**STURDY  
FLOORS**



**STRONG WALLS**

2x6 Exterior Walls, 2x4 Interior Walls  
1/2" Drywall With Screws & Adhesive,  
Formaldehyde Free Batt Insulation,  
Nail-on Electrical Boxes

PointSix Tongue & Groove OSB Decking  
Solid Dimensional Joists - 16" O.C.  
LVL Marriage Line Beam  
Installed HVAC Supply Ducting With  
In-Line HVAC Supply Duct  
Complete Seal Of All Protrusions

BACKED BY THE STRENGTH & STABILITY OF



*Trusted. Tested. True.*

OUR FAMILY OF BUSINESSES

CORPORATE OFFICES

**CHIEF INDUSTRIES, INC.**  
Grand Island, NE

DIVISIONS

**BONNAVILLA**  
Aurora, NE

EAGLE CREST HOMES  
Grand Island, NE

CHIEF AGRI  
Kearney, NE

\*Environmental Products - Grand Island, NE

CHIEF BUILDINGS

Grand Island, NE  
Lincoln, NE  
Rensselaer, IN  
Ft. Dodge, IA

\*Arrowhead Steel - Grand Island, NE

CHIEF FABRICATION

Grand Island, NE

\*Pivot Walker - Grand Island, NE

\*Powder Coat Facility - Grand Island, NE

CHIEF CONSTRUCTION

Grand Island, NE

\*Chief Development - Grand Island, NE  
Lincoln, NE

\*Heartland Electric - Grand Island, NE

SUBSIDIARIES

**CHIEF CARRIERS, INC.**  
Grand Island, NE  
Rensselaer, IN

**CHIEF INDUSTRIES UK LTD**  
Maldon, Essex, England

**CHIEF ETHANOL FUELS, INC.**  
Hastings, NE  
Lexington, NE

**PHENIX-ROUSIES INDUSTRIES,  
S.A.**  
Rousies, France

DETAILS  
make the DIFFERENCE



111 Grant St. | Aurora, NE 68818  
402-694-5250 | www.bonnavilla.com



**WINDSOR**  
WINDOWS & DOORS  
A Woodgrain Millwork Company



1.23.20