



Built to fit your

*Lifestyle*





**B**onnaVilla® series homes are where quality and value meet. BonnaVilla® homes are built with meticulous attention to detail and smart choices in design and material selection, making BonnaVilla® homes remarkably affordable. Available in two to four bedroom designs with a variety of custom options, BonnaVilla® homes are the ideal choice for a starter home, second home, or retirement retreat.



Built to fit your

*Lifestyle*

\*BONNAVILLA INVESTS IN CONTINUOUS PRODUCT AND PROCESS IMPROVEMENT. PLANS, DIMENSIONS, FEATURES, MATERIALS, SPECIFICATIONS, AND AVAILABILITY REPRESENTED ARE SUBJECT TO CHANGE AT ANY TIME, WITHOUT NOTICE OR OBLIGATION. ELEVATIONS AND RENDERINGS ARE FOR DESIGN PURPOSES ONLY AND MAY REFLECT OPTIONAL ITEMS, ITEMS SUPPLIED ON-SITE BY OTHERS, OR ITEMS NOT AVAILABLE ON CERTAIN PROJECTS OR IN CERTAIN AREAS.



A DIVISION OF CHIEF INDUSTRIES, INC.



# SIGNATURE CABINETRY

DETAILS  
make the DIFFERENCE



## CONSTRUCTION FEATURES

*THROUGHOUT ENTIRE HOUSE*

- 1/2" Side Panel Box Construction , Dadoed, Glued, and Fastened Wood, Dadoed Corner Supports*
- Machine Fabricated Cabinet Components*
- Dovetailed Drawer Box Construction*
- 100 lb. Rated, Hidden Metal Drawer Glides*
- Solid Hardwood 3/4" Face Frames and Styles – Pocket Screwed*
- 3/4" Wood Shelf Stock*
- Drawer over Door Kitchen Base Cabinet*



A DIVISION OF CHIEF INDUSTRIES, INC.

# ENERGY EFFICIENCY

DETAILS  
make the DIFFERENCE



## ENERGY EFFICIENCY FEATURES

### Efficient Vinyl Windows

Ensures energy isn't lost through the windows.

### Blown-in Ceiling Insulation

Allows for better coverage and reduces chances for voids or cold spots.

### Formaldehyde-Free Batt Wall Insulation

Will not settle, which decreases chances of voids or cold spots.

### Foam Sealed Protrusions

Keeps conditioned interior air in, and unconditioned exterior air out.

### Perimeter Floor Insulation

Creates a continuously insulated foundation wall beneath the floor

### Metal Supply Air Ductwork

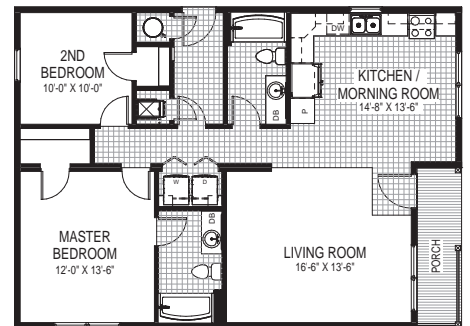
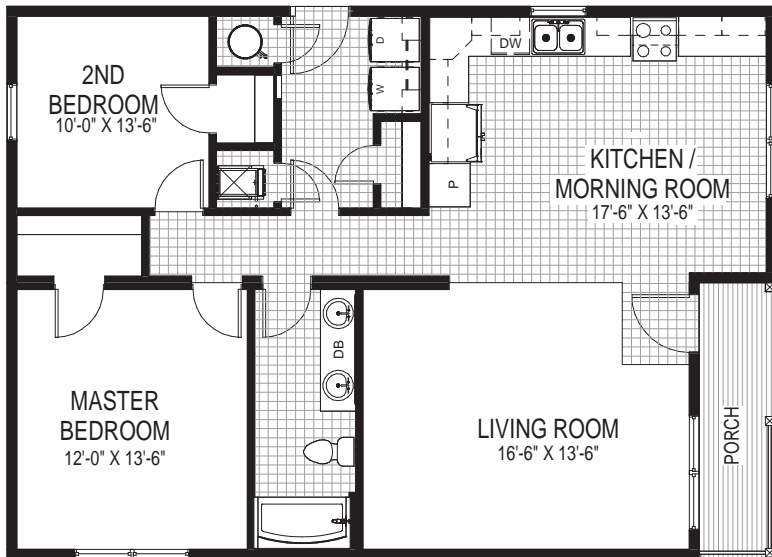
Allows for higher efficiency and lower friction air flow - completely sealed with tape and mastic



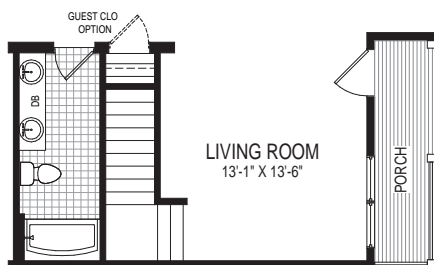
# AUBURN



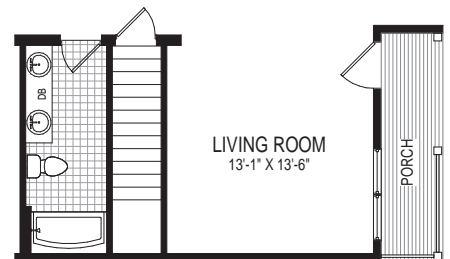
2 Bedrooms | 1 Bathroom | 28'9" x 40'0" | 1093 SQFT + Porch



2 BED | 2 BATH



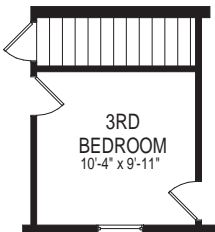
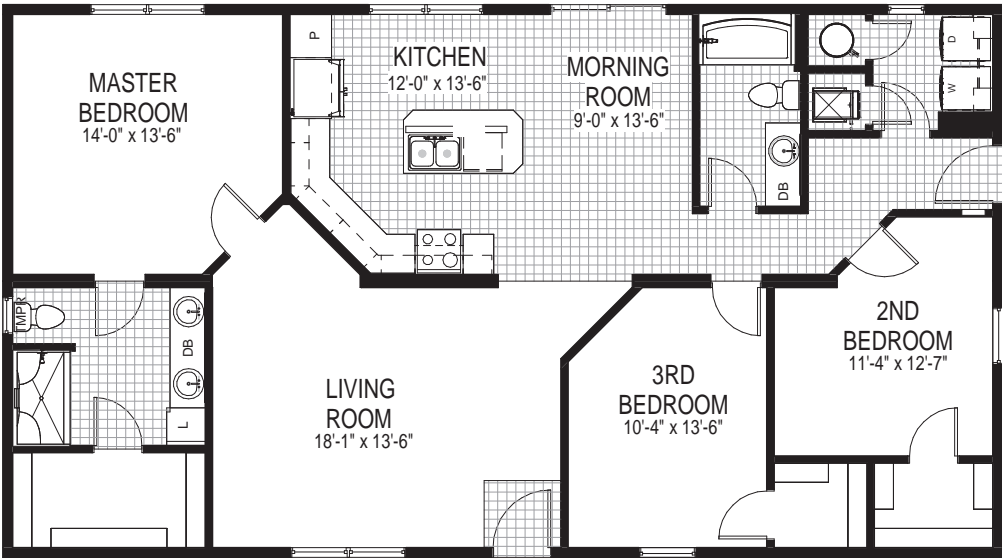
ALTERNATE CAPE COD  
STAIR OPTION



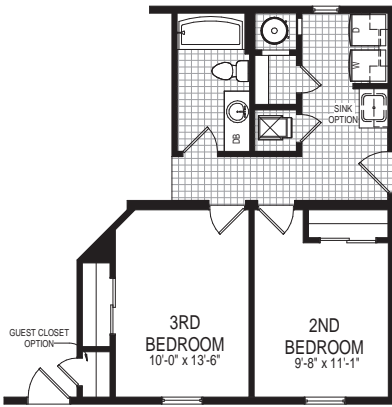
ALTERNATE BASEMENT  
STAIR OPTION



3 Bedrooms | 2 Bathrooms | 28'9" x 52'0" | 1495 SQFT



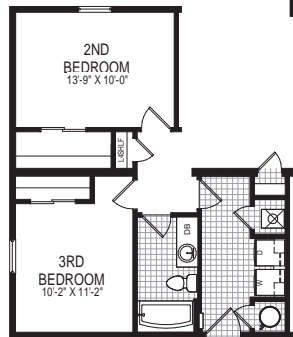
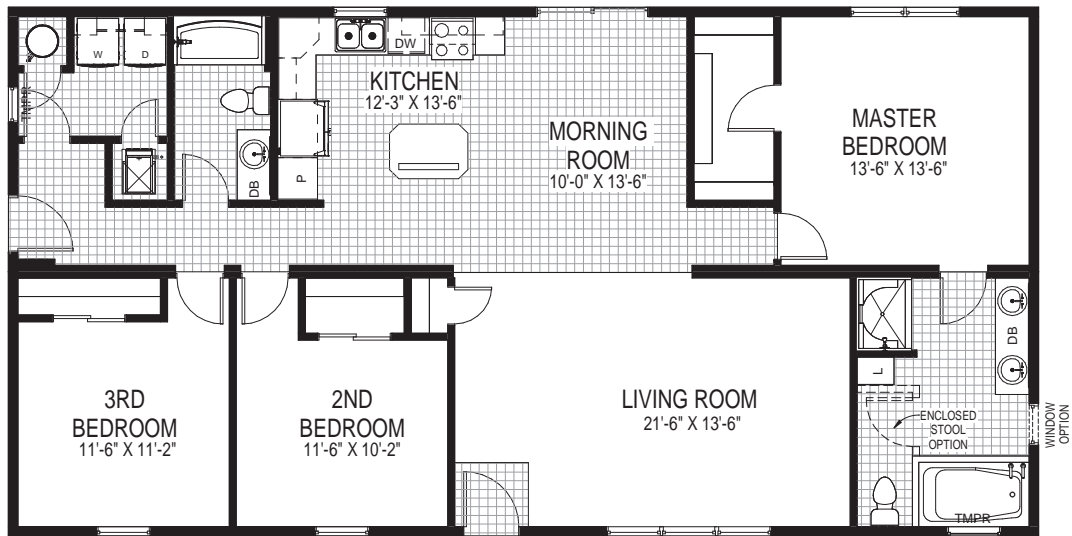
ALTERNATE STAIR OPTION



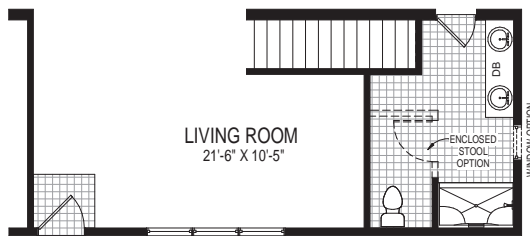
ALTERNATE 2ND/3RD BEDROOM/UTILITY OPTION



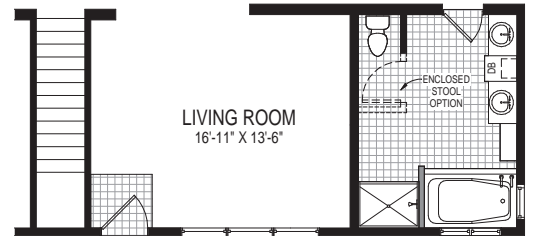
3 Bedrooms | 2 Bathrooms | 28'9" x 56'0" | 1610 SQFT



ALTERNATE GARAGE FRONT LAYOUT



ALTERNATE BASMENT STAIR OPTION

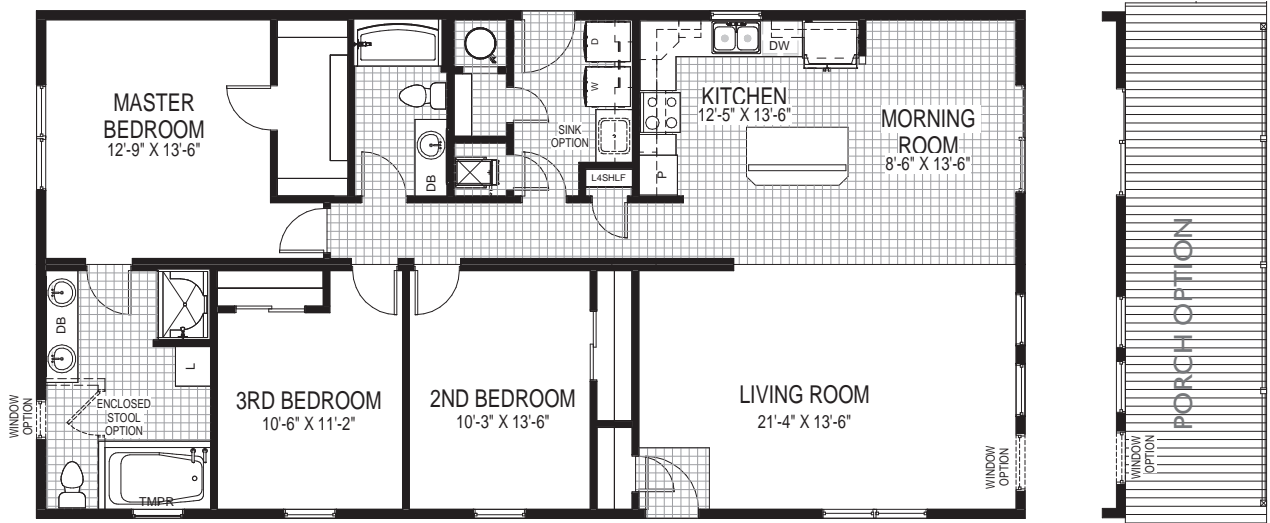


ALTERNATE BASMENT STAIR OPTION #2 AND ALTERNATE MONOGRAM BATH





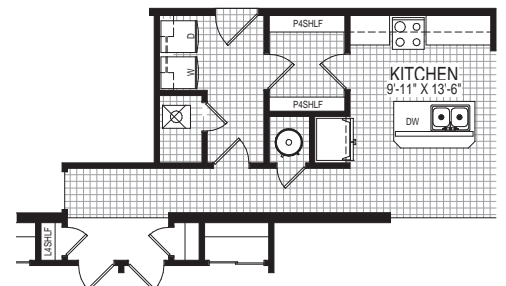
3 Bedrooms | 2 Bathrooms | 28'9" x 56'0" | 1610 SQFT



ALTERNATE BASMENT STAIR OPTION



ALTERNATE BASMENT STAIR OPTION #2

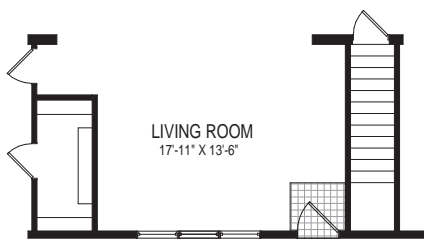
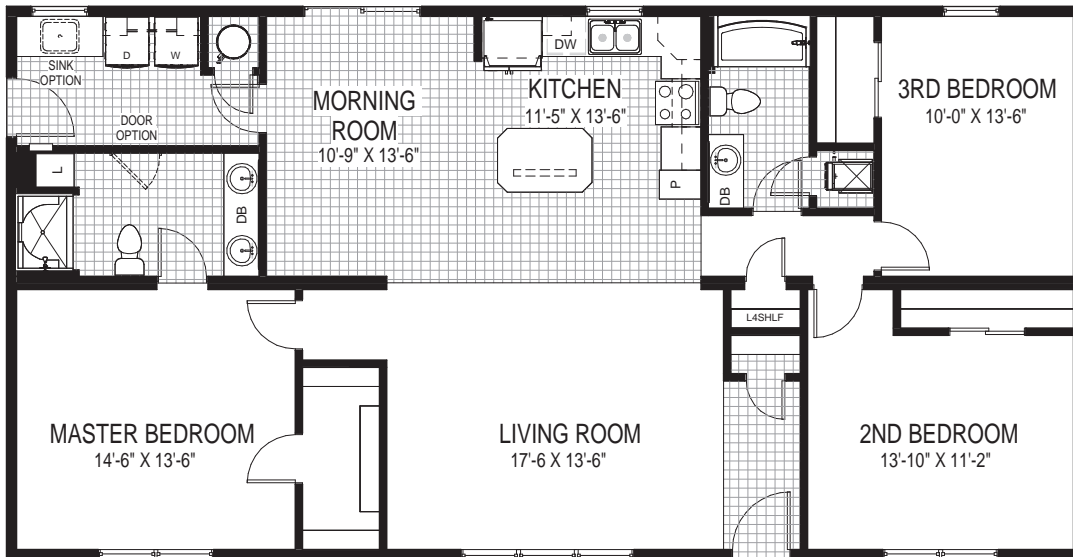


ALTERNATE KITCHEN W/ WALK-THRU PANTRY

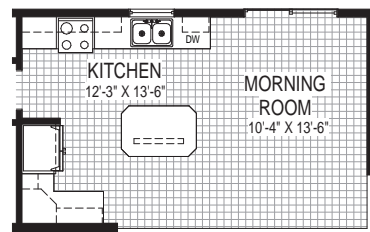
# ELM CREEK



3 Bedrooms | 2 Bathrooms | 28'9" x 56'0" | 1610 SQFT



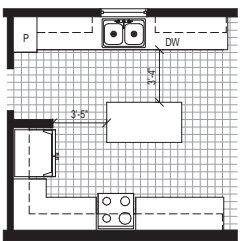
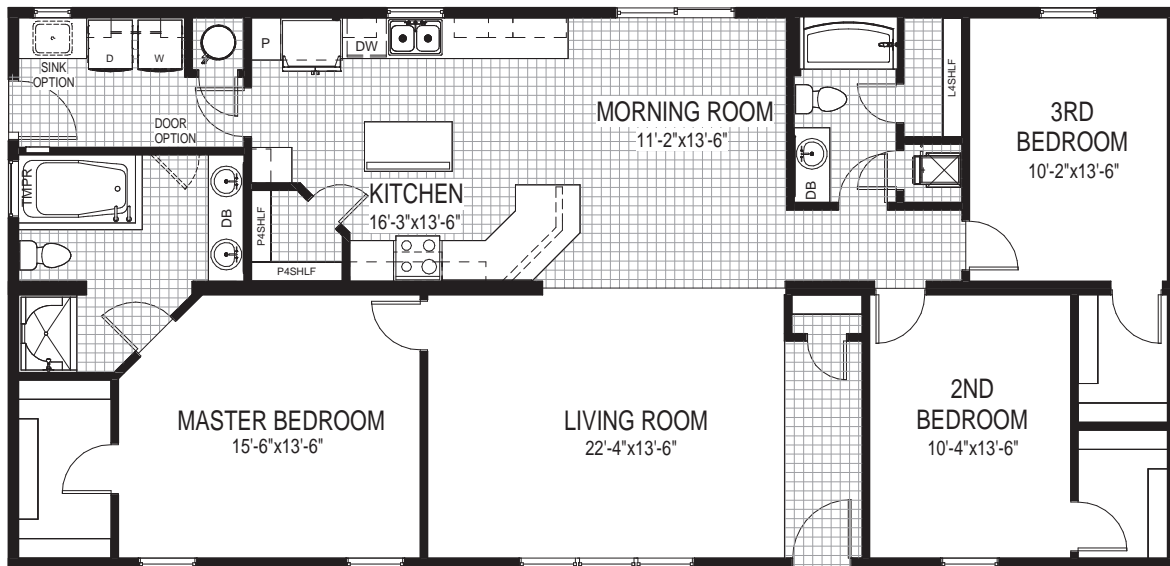
ALTERNATE BASMENT  
STAIR OPTION



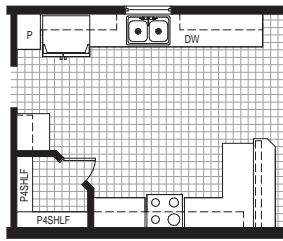
ALTERNATE KITCHEN  
LAYOUT



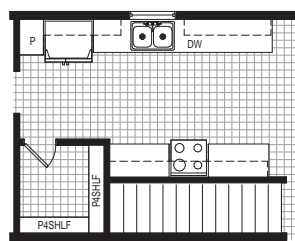
3 Bedrooms | 2 Bathrooms | 28'9" x 60'0" | 1725 SQFT



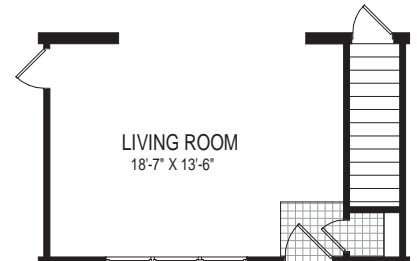
ALTERNATE KITCHEN  
w/ IL02 ISLAND



ALTERNATE KITCHEN  
w/ PENINSULA



ALTERNATE GALLEY KITCHEN  
FOR BASEMENT STAIR OPTION

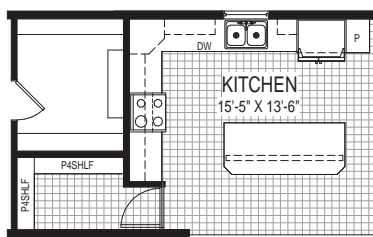
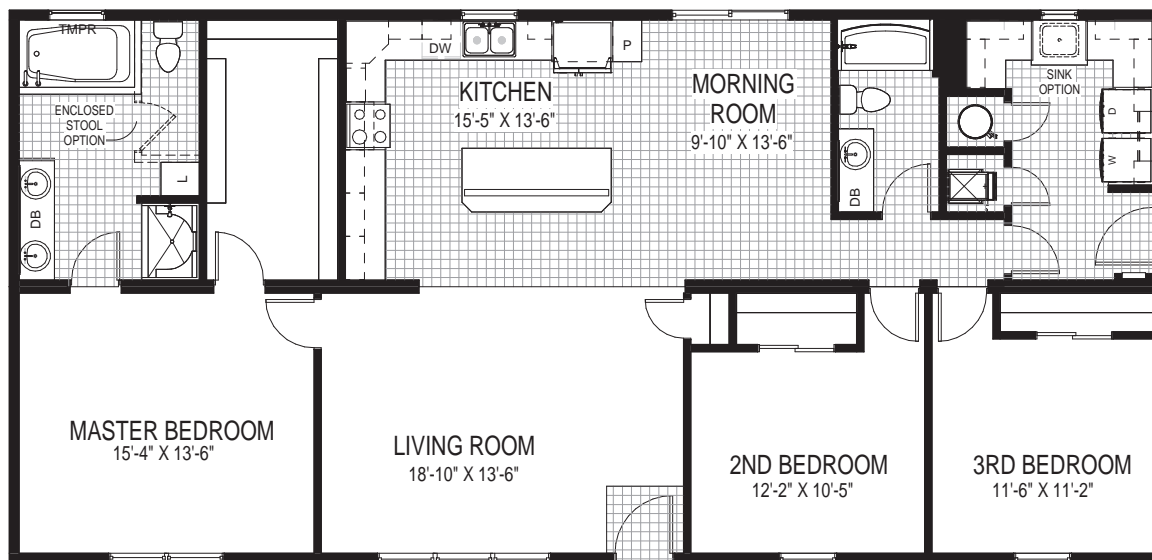


ALTERNATE BASEMENT  
STAIR OPTION

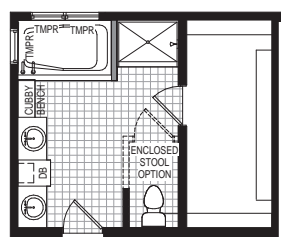
# BISMARCK



3 Bedrooms | 2 Bathrooms | 28'9" x 60'0" | 1725 SQFT



ALTERNATE KITCHEN  
w/ HIDDEN PANTRY



ALTERNATE  
MONOGRAM BATH



ALTERNATE  
STAIR OPTION

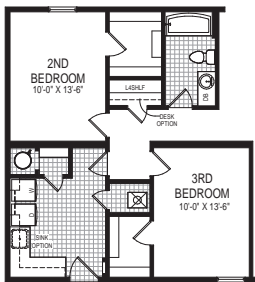
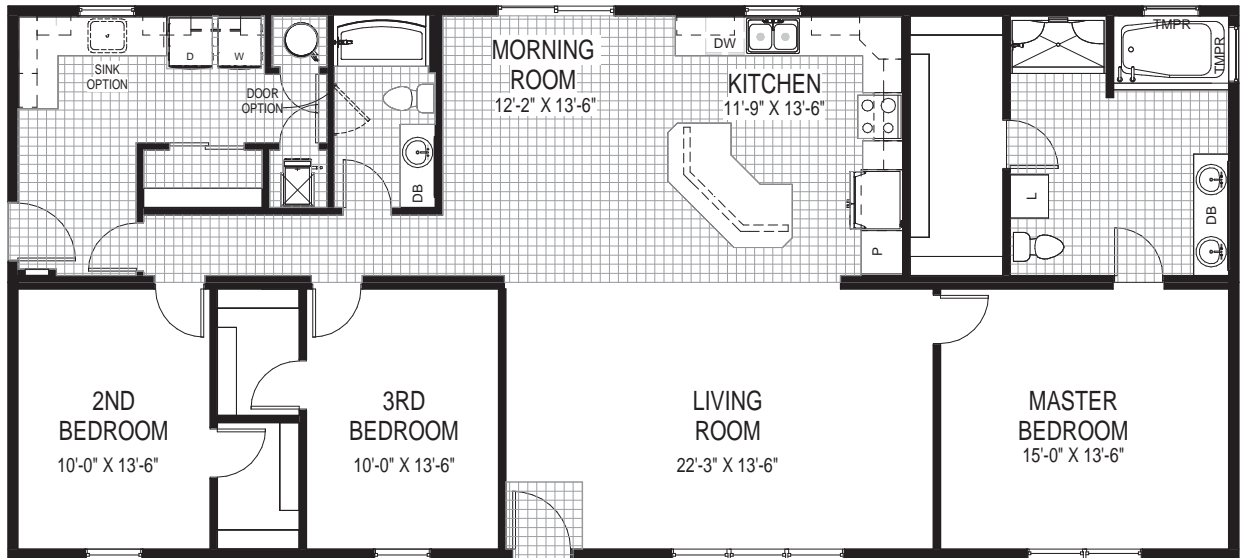


ALTERNATE BASEMENT  
STAIR OPTION #2

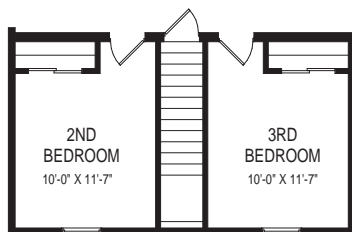
# FULLERTON



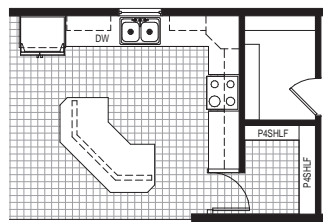
3 Bedrooms | 2 Bathrooms | 28'9" x 64'0" | 1840 SQFT



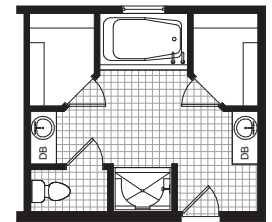
ALTERNATE FRONT GARAGE LAYOUT



ALTERNATE BASEMENT STAIR OPTION



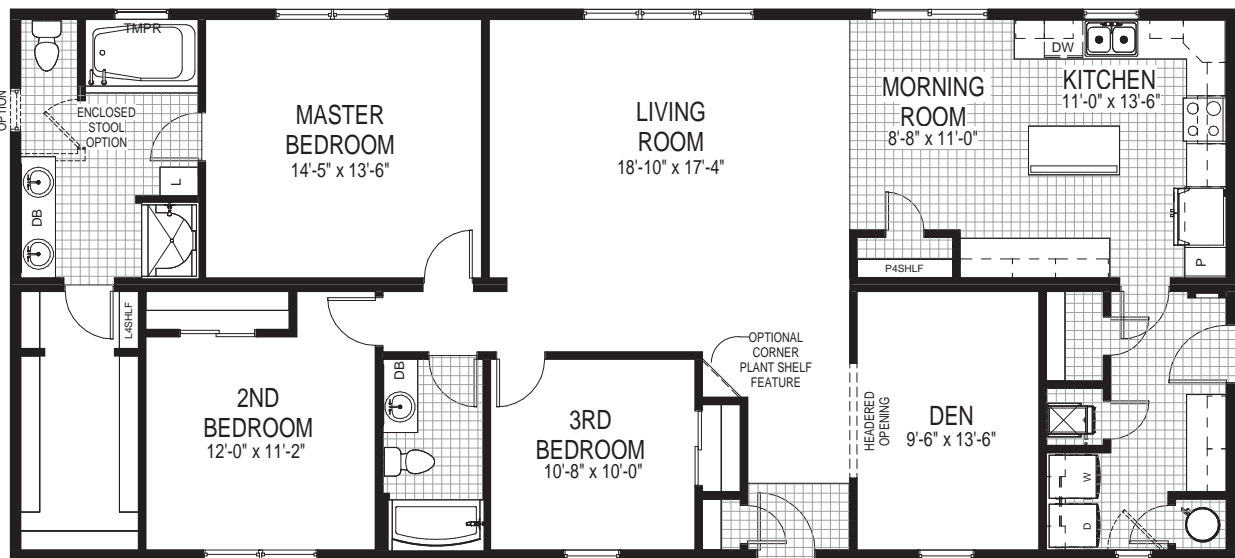
ALTERNATE KITCHEN W/ HIDDEN PANTRY



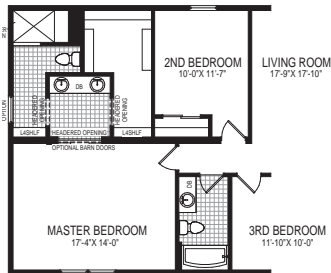
ALTERNATE 5-PIECE MASTER BATH W/ 2 SEPARATE VANITIES



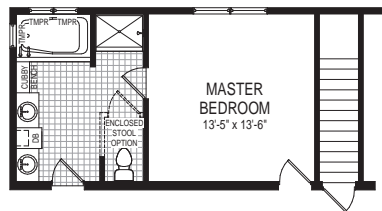
3 Bedrooms | 2 Bathrooms | 28'9" x 64'0" | 1840 SQFT



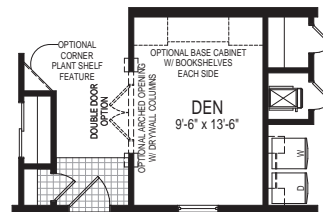
DOOR OPTION



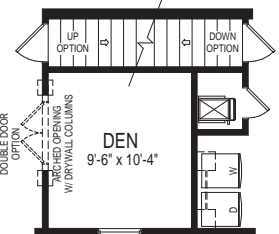
ALTERNATE ENCOMPASS BATH OPTION



ALTERNATE MONOGRAM BATH OPTION AND ALTERNATE BASEMENT STAIR OPTION #1



ALTERNATE DEN OPTIONS

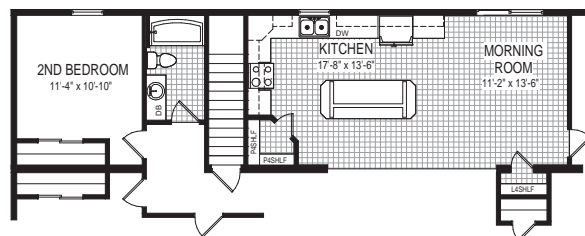
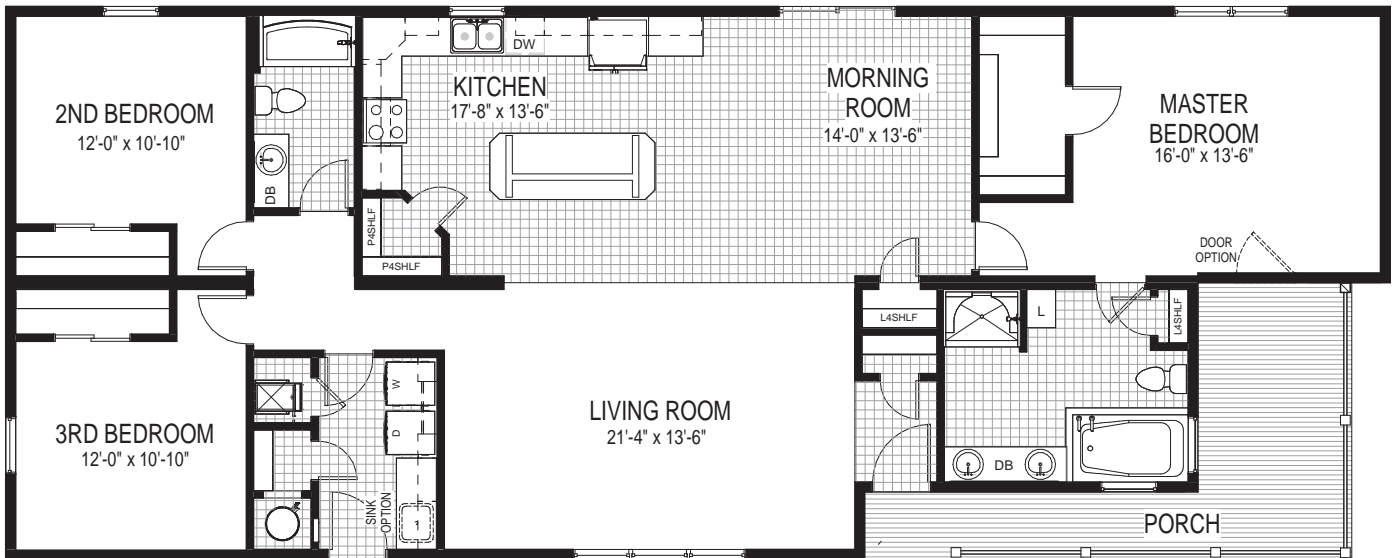


ALTERNATE CAPE COD AND/OR BASEMENT STAIR OPTION

# HILLSDALE



3 Bedrooms | 2 Bathrooms | 28'9" x 72'0"/70'0" | 1866 SQFT

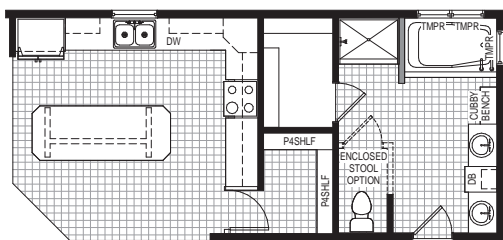
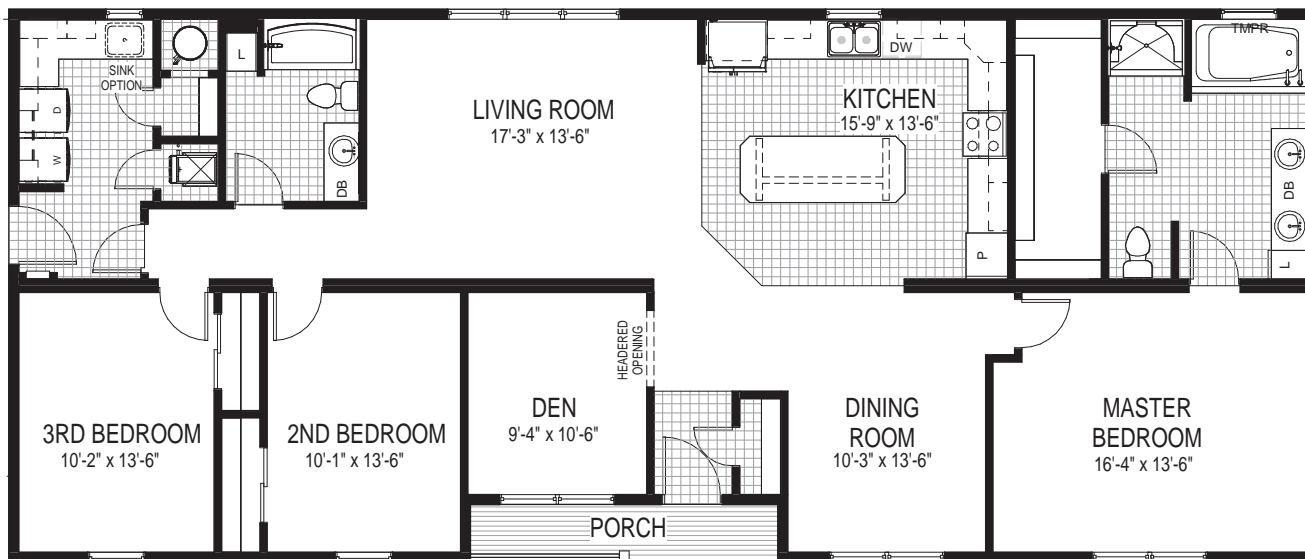


ALTERNATE BASEMENT  
STAIR OPTION

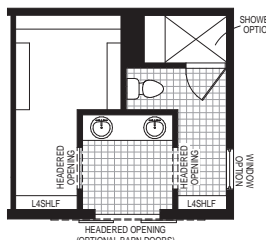
# NORFOLK



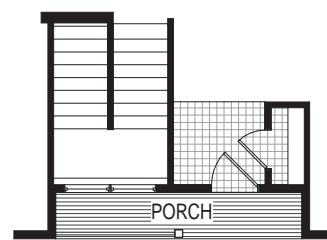
3 Bedrooms | 2 Bathrooms | 28'9" x 68'0" | 1907 SQFT



ALTERNATE HIDDEN PANTRY AND ALTERNATE MONOGRAM BATH



ALTERNATE ENCOMPASS BATH OPTION



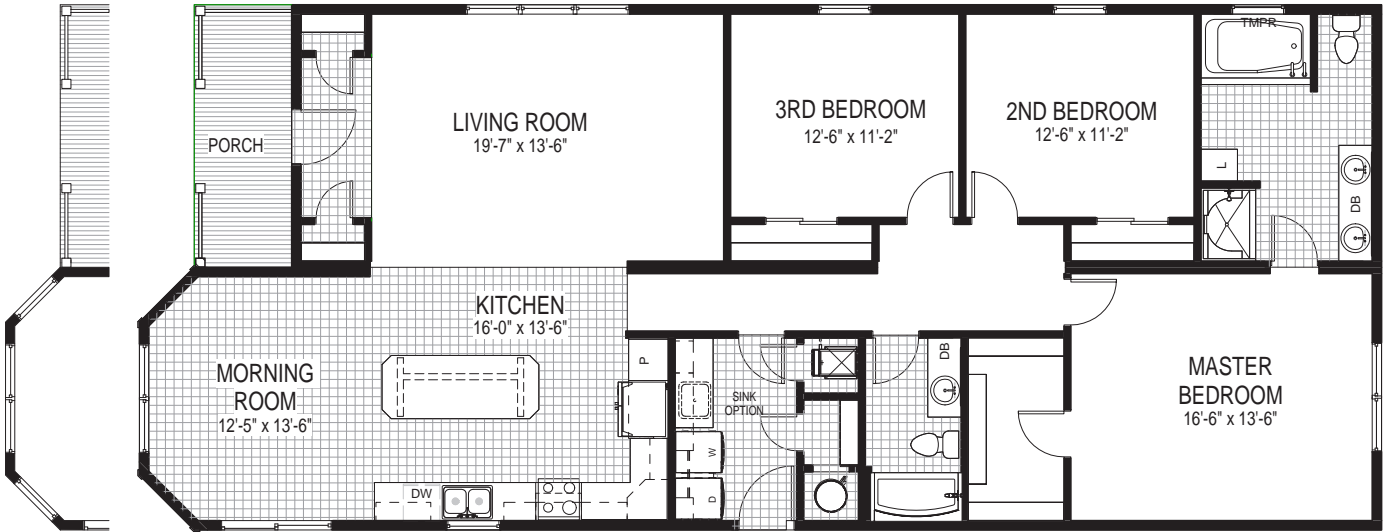
ALTERNATE U-SHAPED BASEMENT STAIR OPTION



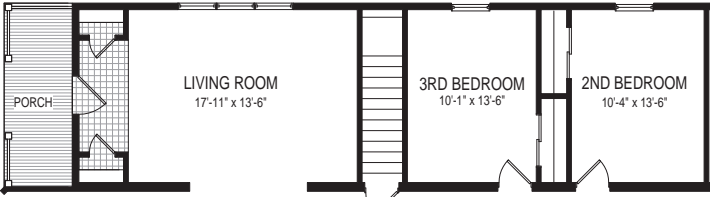
# HELENA



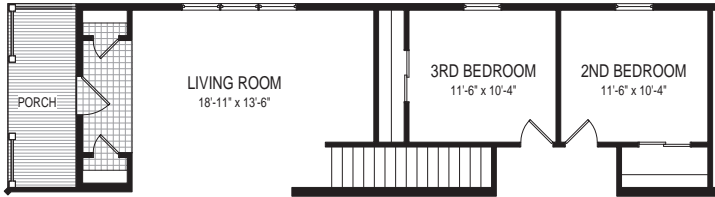
3 Bedrooms | 2 Bathrooms | 28'9" x 68'0" | 1826 SQFT



ALTERNATE WINDOW OPTION



ALTERNATE BASEMENT STAIR OPTION

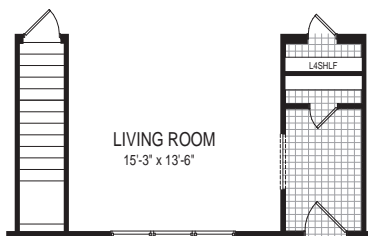
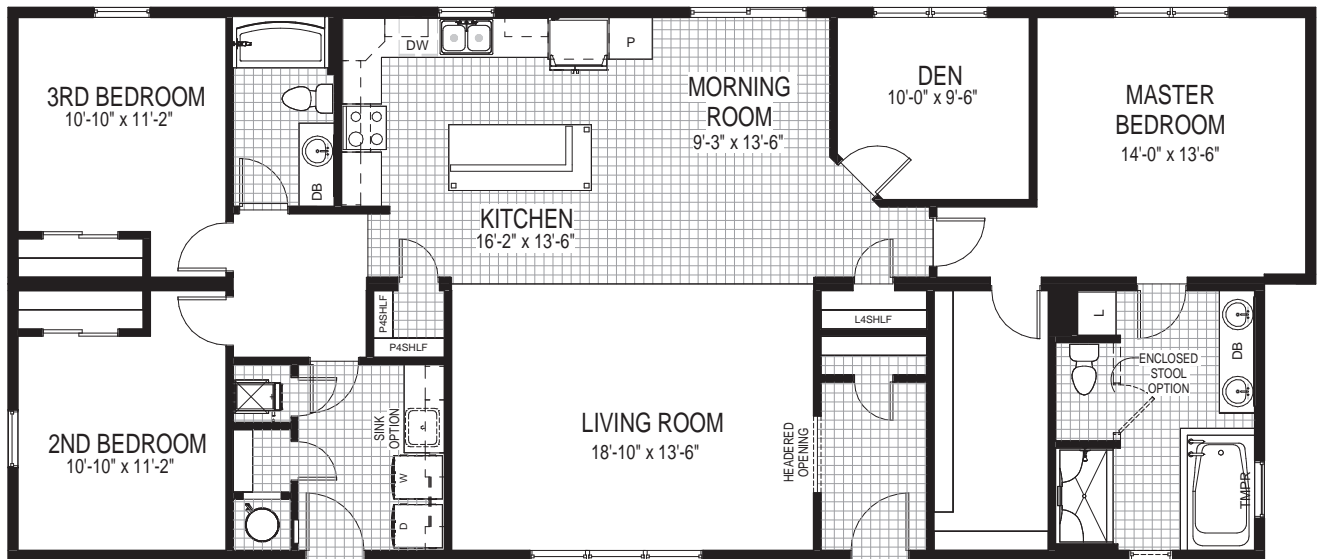


ALTERNATE CAPE COD AND/OR BASEMENT STAIR OPTION

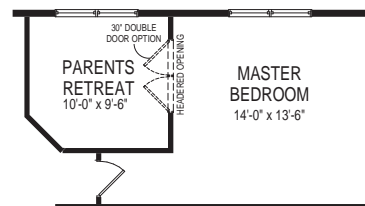
# NORTH RIVER



3 Bedrooms | 2 Bathrooms | 28'9" x 68'0"/65'5" | 1917 SQFT



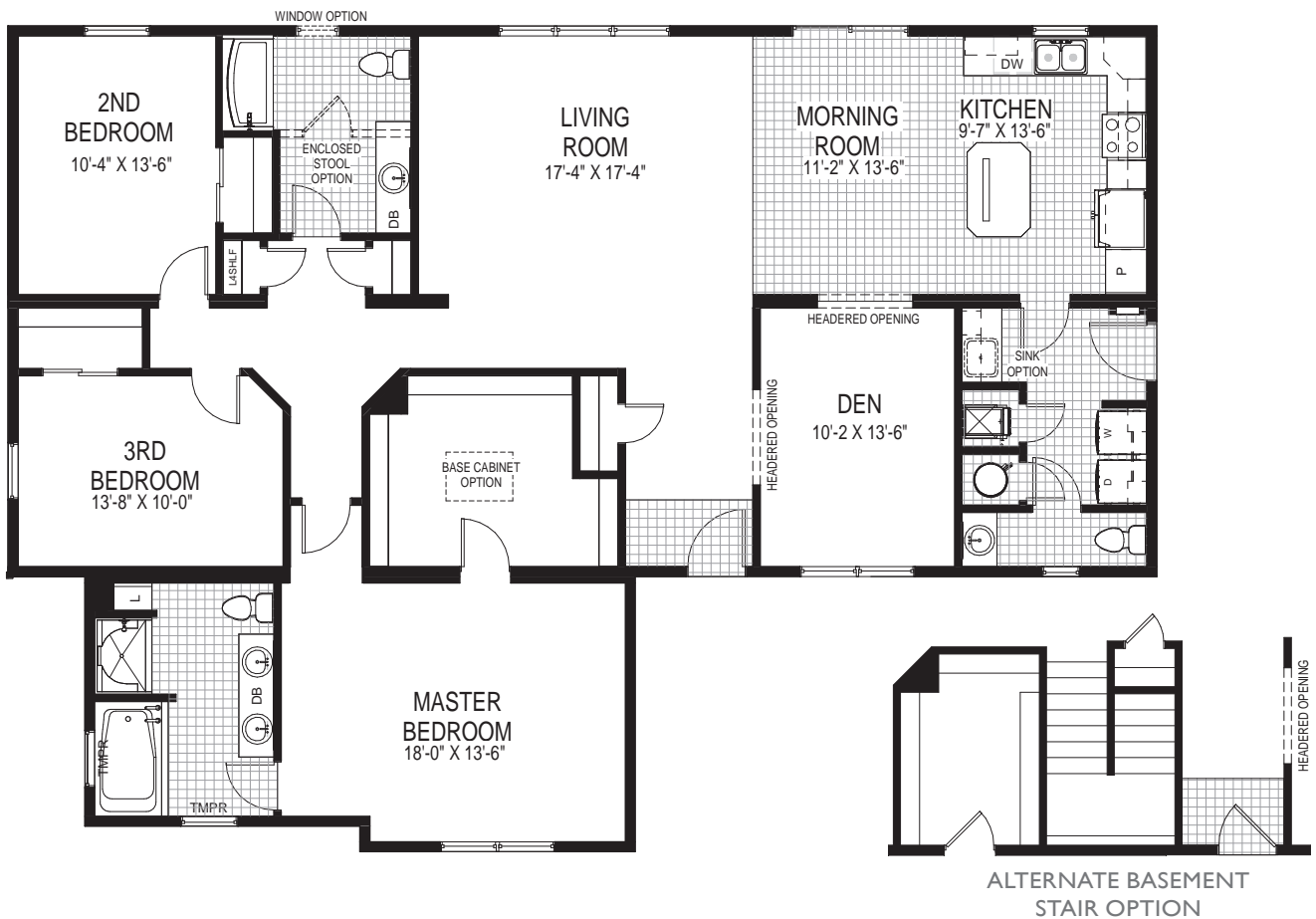
ALTERNATE BASEMENT  
STAIR OPTION



ALTERNATE PARENTS  
RETREAT OPTION



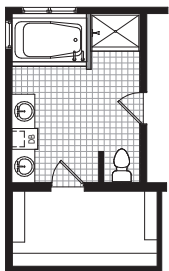
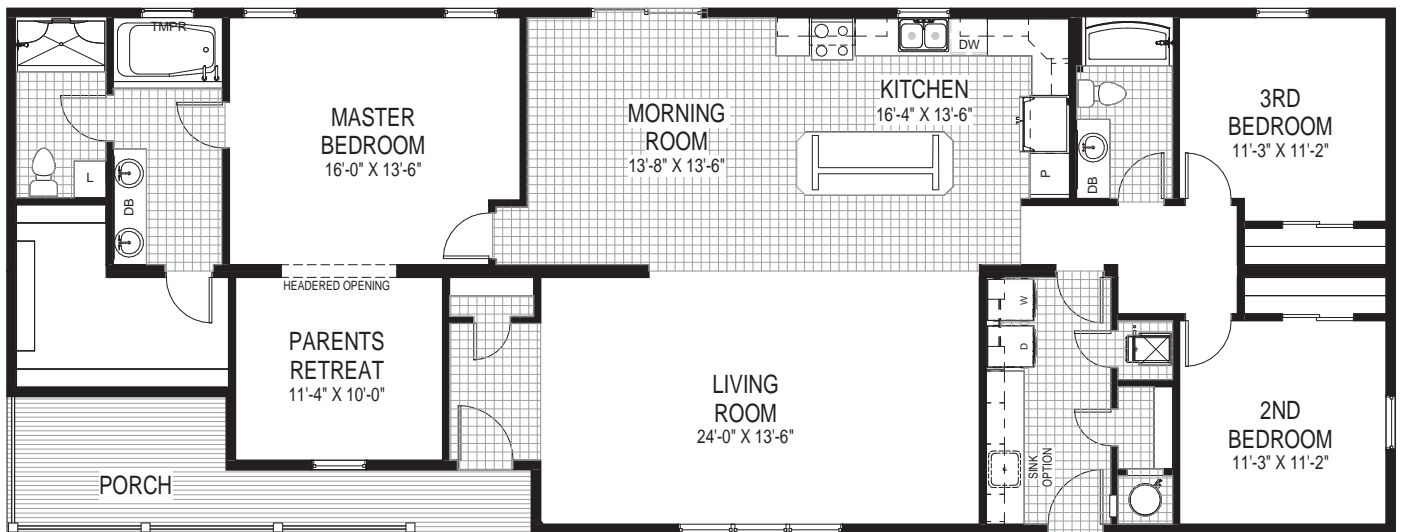
3 Bedrooms | 2-1/2 Bathrooms | 28'9" x 60'0" + 14'4-1/2" x 28'9" | 2119 SQFT



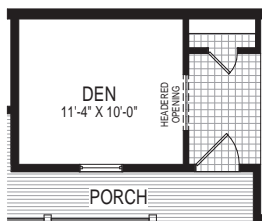
# JUPITER



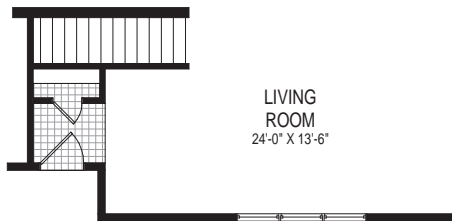
3 Bedrooms | 2 Bathrooms | 28'9" x 76'0" | 2037 SQFT



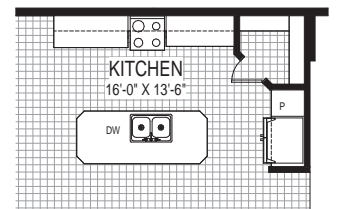
ALTERNATE MONOGRAM BATH



ALTERNATE DEN OPTION



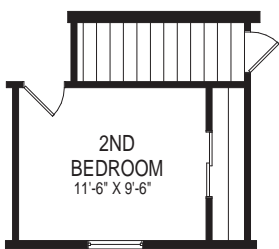
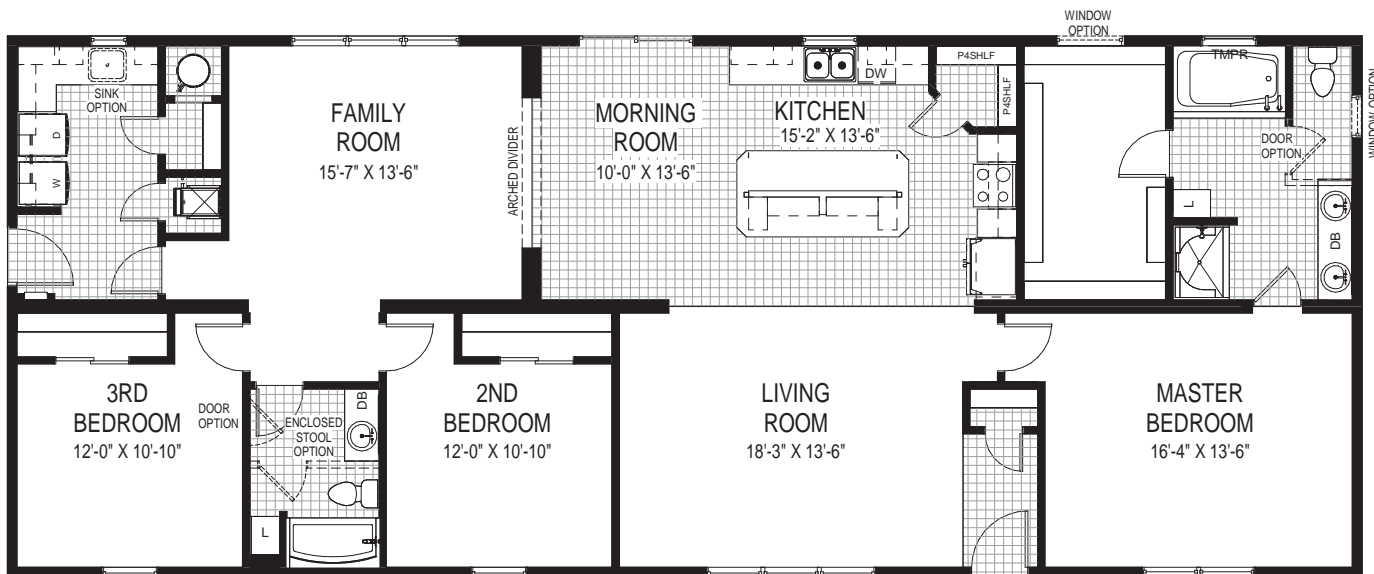
ALTERNATE STAIR OPTION



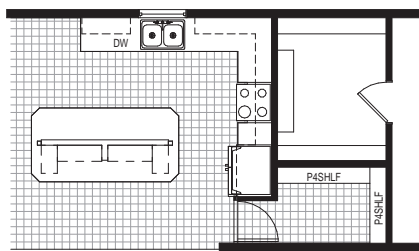
ALTERNATE KITCHEN W/ CORNER PANTRY AND IL26 ISLAND



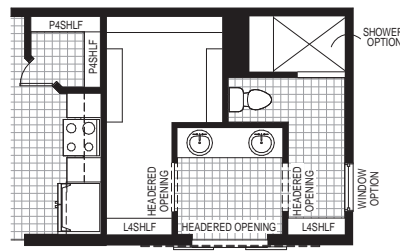
3 Bedrooms | 2 Bathrooms | 28'9" x 72'0" | 2070 SQFT



ALTERNATE  
BASEMENT STAIR OPTION



ALTERNATE KITCHEN  
W/ HIDDEN PANTRY OPTION

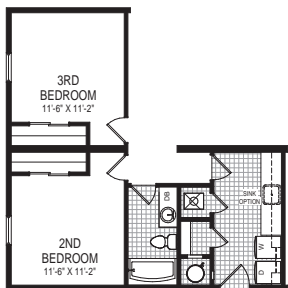
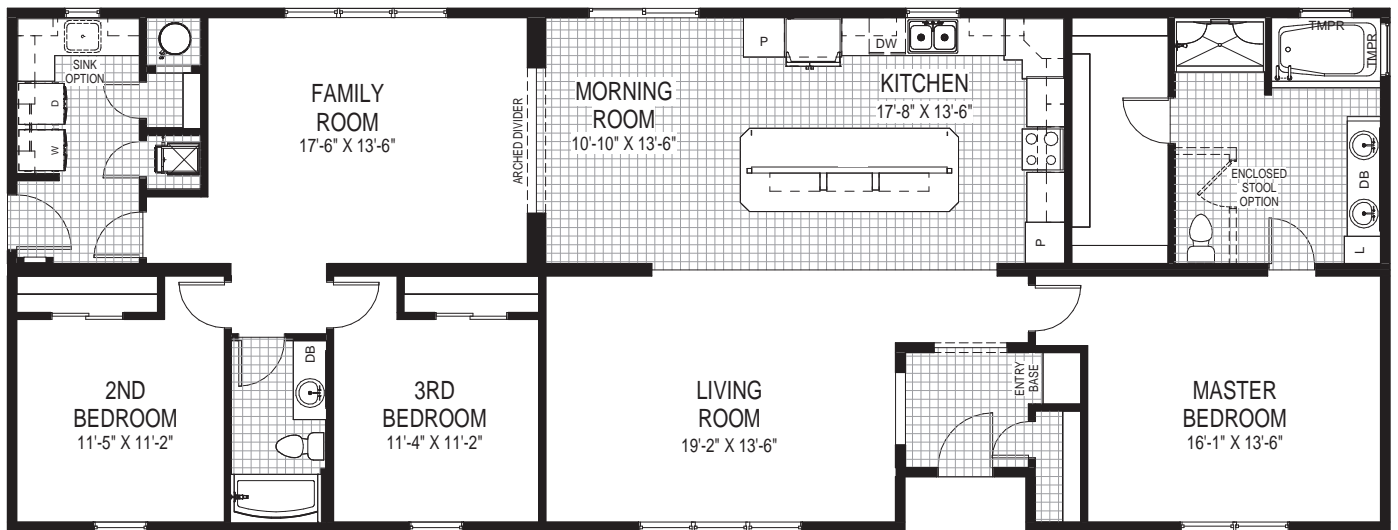


ALTERNATE ENCOMPASS  
BATH OPTION

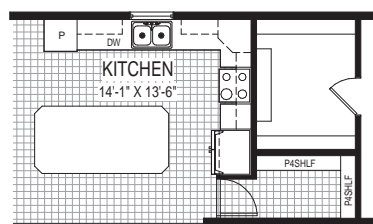
# JACKSONVILLE



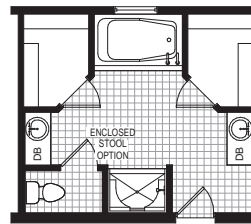
3 Bedrooms | 2 Bathrooms | 28'9" x 76'0" | 2165 SQFT



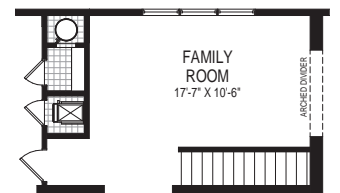
ALTERNATE FRONT UTILITY ROOM



ALTERNATE HIDDEN PANTRY KITCHEN LAYOUT W/ ILLI8 ISLAND



ALTERNATE 5-PIECE MASTER BATH W/ 2 SEPARATE VANITIES

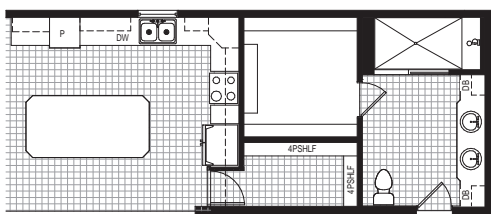
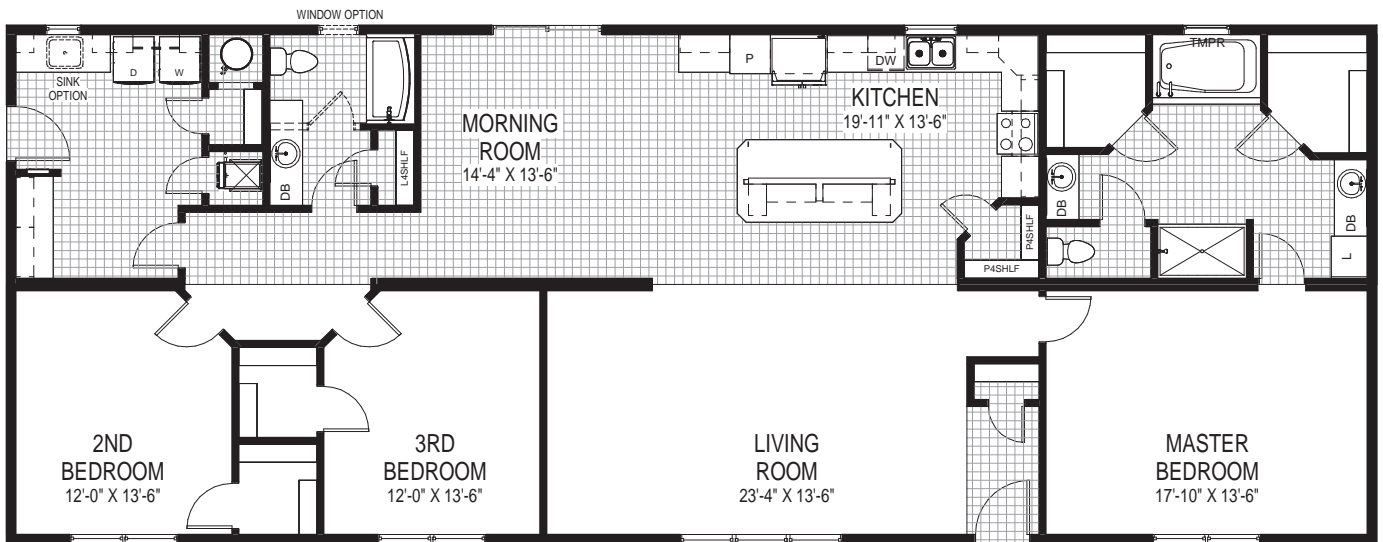


ALTERNATE STAIR OPTION

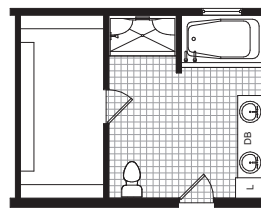
# JOHNSTOWN



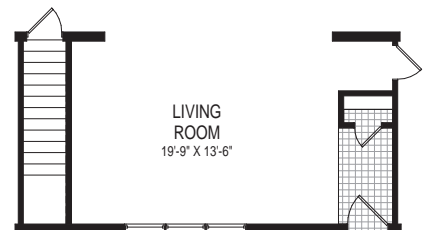
3 Bedrooms | 2 Bathrooms | 28'9" x 76'0" | 2185 SQFT



ALTERNATE KITCHEN LAYOUT W/ HIDDEN PANTRY  
ALTERNATE MASTER BATH W/ GRAND SHOWER  
AND GRAND VANITY



ALTERNATE MASTER  
BATH LAYOUT

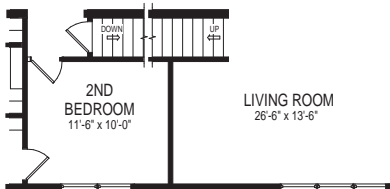


ALTERNATE BASEMENT  
STAIR OPTION

# JANSEN



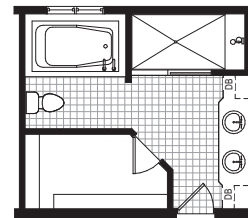
3 Bedrooms | 2 Bathrooms | 28'9" x 76'0" | 2185 SQFT



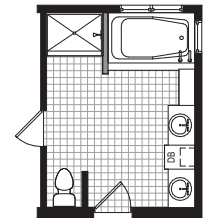
ALTERNATE CAPE COD AND/OR BASEMENT STAIR OPTION



ALTERNATE BASEMENT STAIR OPTION #2



ALTERNATE GRAND BATH

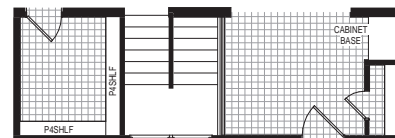
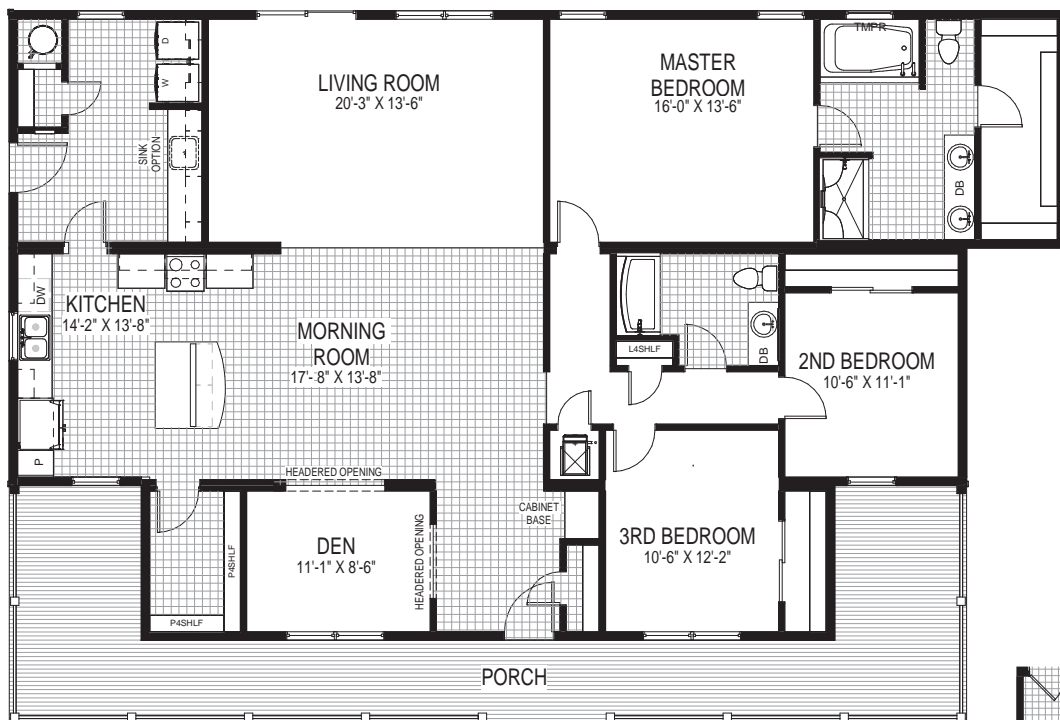


ALTERNATE MONOGRAM BATH





3 Bedrooms | 2 Bathrooms | 43' 1-1/2" x 64' 0"/58' 0" | 2147 SQFT

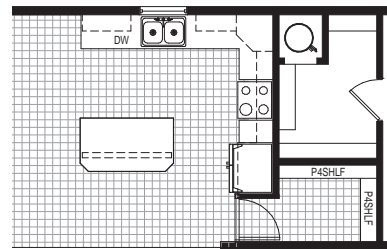


ALTERNATE BASEMENT  
STAIR OPTION

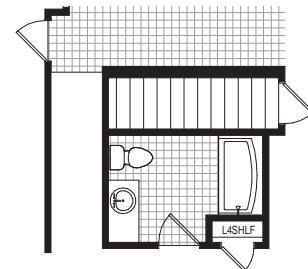
# KENESAW



3 Bedrooms | 2 Bathrooms | 43' 1-1/2" x 54'0" | 2254 SQFT



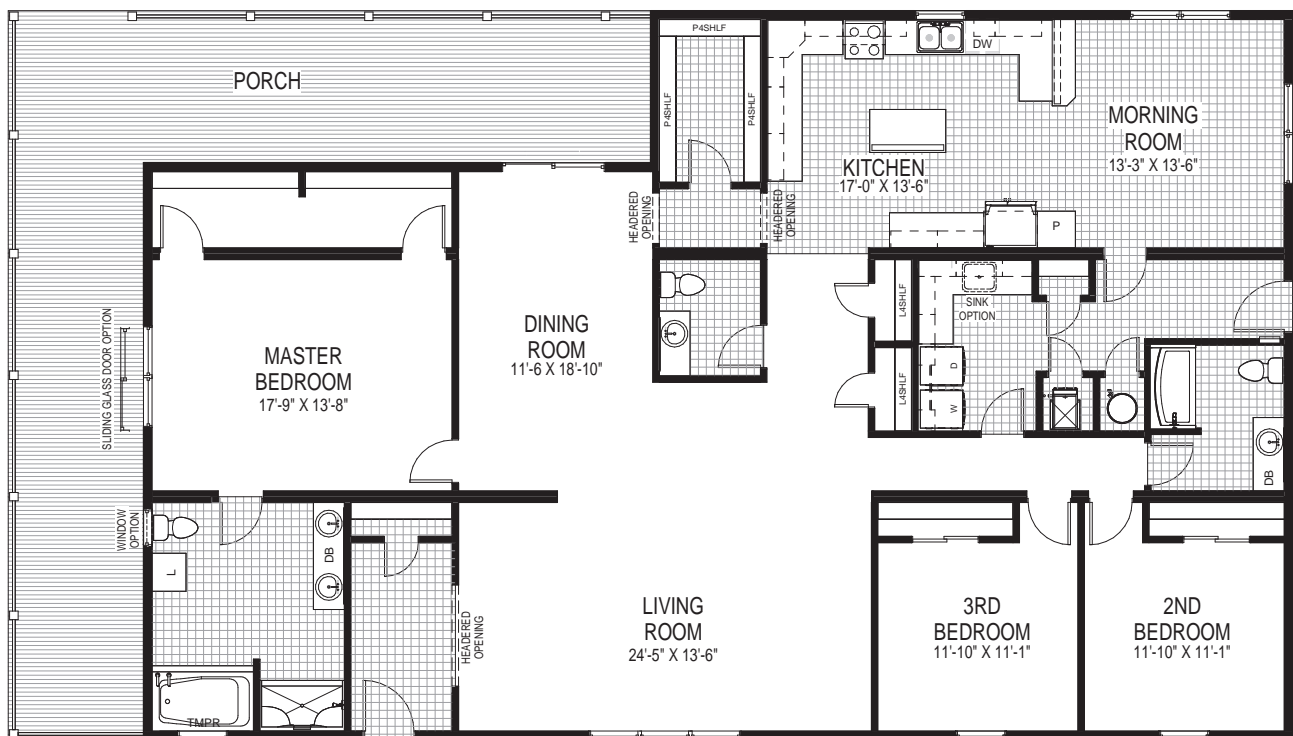
ALTERNATE KITCHEN LAYOUT  
W/ HIDDEN PANTRY



ALTERNATE BASEMENT  
STAIR OPTION



3 Bedrooms | 2-1/2 Bathrooms | 43' 1-1/2" x 76'0" | 2663 SQFT



## DURABLE ROOF & CEILING

5/8" Drywall Ceilings  
 Engineered Roof Trusses  
 Energy Efficient Blown Insulation  
 Complete Seal of All Protrusions  
 7/12 Attic Storage & 9/12 Cape Roofs



## INTERIOR CHOICES



## GARAGE - READY PLANS



## SIGNATURE CABINETRY

1/2" Side Panel Box Construction, Dadoed, Glued, & Fastened Wood, Dadoed Corner Supports  
 Machine Fabricated Cabinet Components  
 Wood Drawer Box Construction  
 100 lb. Rated, Hidden Metal Drawer Glides  
 Solid Hardwood 3/4" Face Frames and Styles - Pocket Screwed  
 3/4" Wood Shelf Stock  
 Drawer over Door Kitchen Base Cabinet

# CHIEF INDUSTRIES

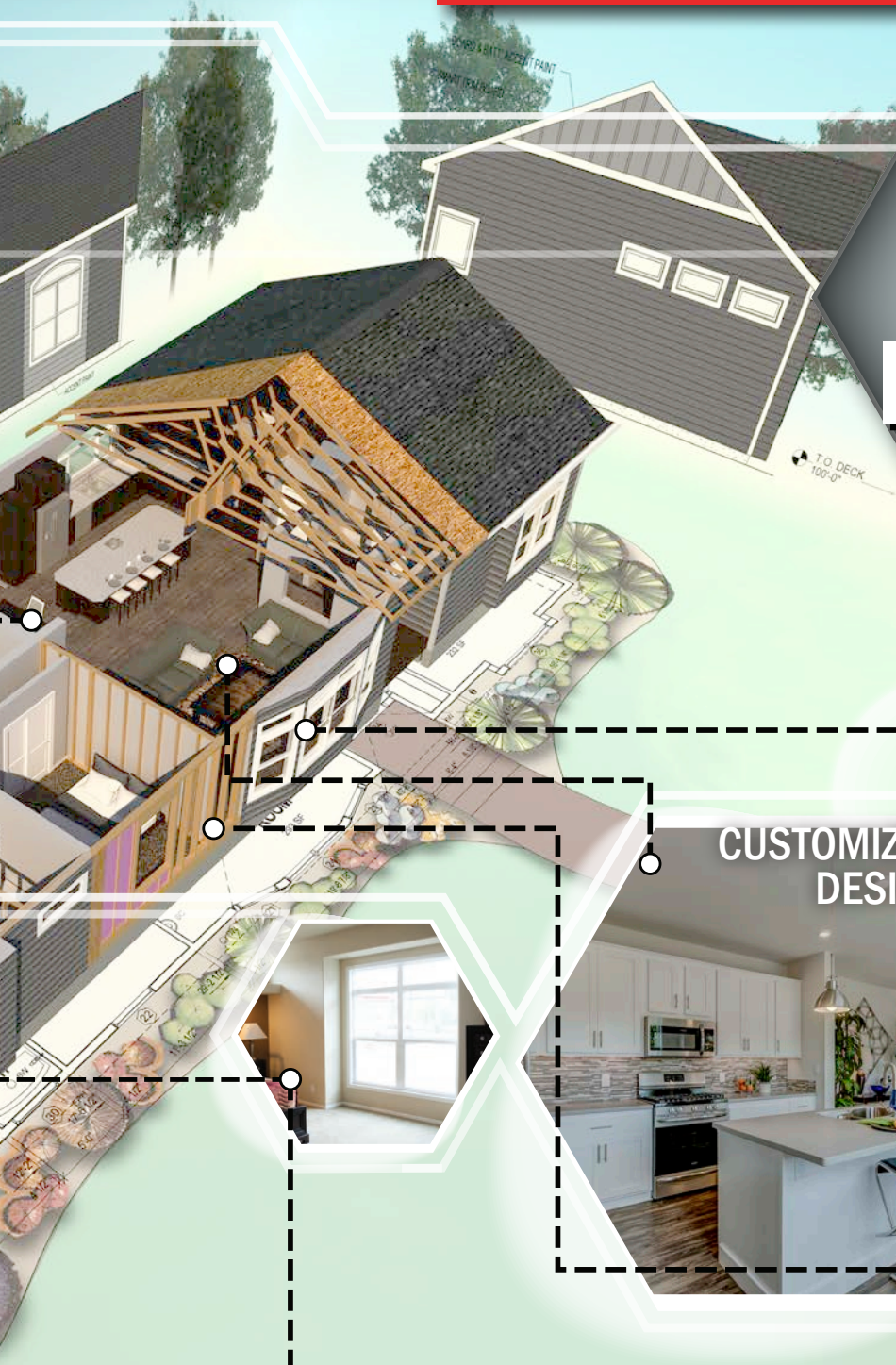
Trusted. Tested. True.



**BONNAVILLA®**

A DIVISION OF CHIEF INDUSTRIES, INC.

# DETAILS MAKE THE DIFFERENCE



## FLEXIBLE EXTERIORS



## CUSTOMIZED DESIGNS



## STURDY FLOORS

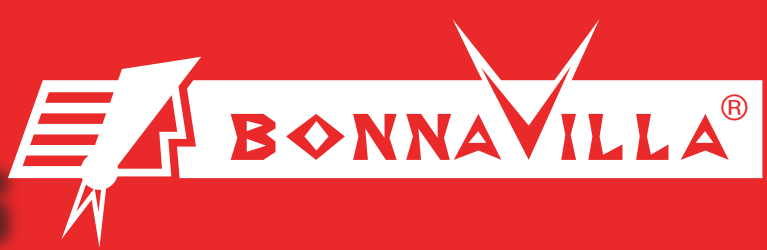


## STRONG WALLS

2x6 Exterior Walls, 2x4 Interior Walls  
1/2" Drywall With Screws & Adhesive,  
Formaldehyde Free Batt Insulation,  
Nail-on Electrical Boxes

PointSix Tongue & Groove OSB Decking  
Solid Dimensional Joists - 16" O.C.  
LVL Marriage Line Beam  
Installed HVAC Supply Ducting With  
In-Line HVAC Supply Duct  
Complete Seal Of All Protrusions

# SERIES STANDARDS



## CONSTRUCTION

- \* 4/12 Roof Pitch - 40# Roof Load
- \* R-21 Batt Insulation - Ext. Wall Insulation
- \* R-50 Blown Insulation - Roof/Ceiling
- \* Perimeter Insulation in Floor Cavity
  - \* 8' Sidewalls (w/Flat Ceilings)
- \* Insulated Door/Window Headers
  - \* 2x10 Floor Joist 16" O.C.
- \* 11-7/8" Marriage Line LVL w/ Inline Heat Duct
  - \* 3/4" T&G OSB Floor Decking
- \* 2x6 Exterior Wall Framing (Double Top Plate) - 16" O.C.
  - \* 7/16" OSB Ext. Wall Sheathing (Typical)
  - \* House Wrap Siding Underlayment
    - \* 4" Dutch Lap Vinyl Siding
  - \* Pre-finished Metal Soffit & Fascia
    - \* Architectural Shingles
    - \* 16" Overhang

## INTERIOR WALLS/ CEILING

- \* 2x4 Interior Walls - 16" o.c.
- \* Orange Peel - Interior Drywall Texture
  - \* 1/2" Drywall - Interior Walls
  - \* 5/8" Drywall Ceilings
- \* Primed and Painted Interior Walls and Ceilings
- \* 5 Panel White or Painted Grey Hollow-Core Int. Doors (or Stained Flat Panel Mocha/Stained Flat Panel Dusk Oak)
  - \* Wide Base/Case (White, Mocha, Willow, or Dusk)
  - \* Nickel Lever Handles (Nickel Hinges/Stops)
  - \* Wood Shelving Throughout

## CABINERY & COUNTERS

- \* Stratford Mocha Maple/Stratford Dusk Oak/Stratford Willow Maple Cabinets
- \* Stained Wood Stiles, Face Frames, & End Panels
  - \* Staggered Cabinet Design (Per Plan)
- \* Crown Molding on Overhead Cabinets
  - \* Cabinet Door & Drawer Hardware
  - \* Dovetailed Drawer Box Construction
    - \* Soft-close Doors & Drawers
- \* Laminate Counter Tops w/Solid Surface Edging
  - \* Metal Edging on Tile Throughout

## HVAC

- \* High Efficiency Gas Furnace & Duct Work Installed
  - \* Perimeter Heat System w/Floor Registers
    - \* Indirect Return Air
  - \* Programmable Digital Thermostat

## ELECTRICAL

- \* 200 Amp Electric Service w/40 spaces
- \* Smoke Alarms/CO2 Detection w/Battery Back-up
- \* (2) Weather Resistant Exterior GFIs (Front/Rear)
- \* Nickel Trimmed Surface Mount Lights - Throughout
  - \* Nail-on Electrical Boxes

## WINDOW / EXTERIOR DOORS

- \* Vinyl - Single Hung White Low-E Windows
- \* 36"x80" 3-Panel White, Front/Rear Door w/ Nickel Knob & Deadbolt
- \* Sliding Glass Door - Morning/Dining Room (Per Plan)

## KITCHEN

- \* Tile Backsplash to Bottom of Head Cabinets
- \* 18.2 C.F. Frost Free Top/Bottom Refrigerator-White
- \* 30" Freestanding Electric, Self-Clean Range -White
- \* 30" Lighted Range Hood w/Recirculating Vent - White
  - \* 2 Cycle Dishwasher - White
- \* Deep Double Bowl Stainless Steel Top-Mount Sink
  - \* High-Arch Single Lever Faucet w/Spray - Nickel
  - \* Glue-Down Resilient Vinyl Tile Flooring
  - \* (1) 4" LED Can Light over Sink - Kitchen
- \* Nickel Pendant Light - Dining & Morning Rooms

## BATHROOM

- \* 6" Tile Backsplash
- \* Bathroom 2-Bulb Vanity Light
  - \* Elongated Stools - White
- \* 42x72 Ultra Tub and Separate Shower In Master (Per Plan)
  - \* White China Lavs - Dual Lever Nickel Faucets
  - \* 1-Piece Fiberglass (White ) Tub/Shower in Main Bath
  - \* Fan/Light Combination (Separate Switch) in Ceiling
    - \* Glue-Down Resilient Vinyl Tile Flooring
  - \* Nickel Towel Bar, Tissue Holder, Towel Ring
    - \* Designer Mirror Trim

## UTILITY

- \* 48" LED Cloud Light - Utility Room
- \* 40 Gallon Electric Water Heater
  - \* 1 - Exterior Hydrant (Rear)
- \* Glue-Down Resilient Vinyl Tile Flooring

## OTHER ROOM FLOORING

- \* Level 2 Shaw Carpet w/6# Rebond Carpet Pad
  - \* Glue-Down Resilient Vinyl Tile Flooring





OUR FAMILY OF BUSINESSES



Trusted. Tested. True.

CORPORATE OFFICES  
**CHIEF INDUSTRIES, INC.**  
 Grand Island, NE

DIVISIONS

BONNAVILLA  
 Aurora, NE

EAGLE CREST HOMES  
 Grand Island, NE

CHIEF AGRI  
 Kearney, NE

\*Environmental Products - Grand Island, NE

CHIEF BUILDINGS  
 Grand Island, NE  
 Lincoln, NE  
 Rensselaer, IN  
 Ft. Dodge, IA

\*Arrowhead Steel - Grand Island, NE

CHIEF FABRICATION  
 Grand Island, NE

\*Pivot Walker - Grand Island, NE

\*Powder Coat Facility - Grand Island, NE

CHIEF CONSTRUCTION  
 Grand Island, NE

\*Chief Development- Grand Island, NE - Lincoln, NE

\*Heartland Electric- Grand Island, NE

SUBSIDIARIES

**CHIEF CARRIERS, INC**  
 Grand Island, NE  
 Rensselaer, IN

**CHIEF INDUSTRIES UK LTD**  
 Maldon, Essex, England

**CHIEF ETHANOL FUELS, INC.**  
 Hastings, NE  
 Lexington, NE

**PHENIX-ROUSIES INDUSTRIES,  
 S.A.**  
 Rousies, France

BONNAVILLA® SERIES

AUBURN	6
DOVER	7
ELWOOD	8
GENOA	9
ELM CREEK	10
FOXBORO	11
BISMARCK	12
FULLERTON	13
GRAFTON	14
HILLSDALE	15
NORFOLK	16
HELENA	17
NORTH RIVER	18
EDEN	19
JUPITER	20
INWOOD	21
JACKSONVILLE	22
JOHNSTOWN	23
JANSEN	24
KIMBALL	25
KENESAW	26
KEYSTONE	27

To find out more about our family businesses  
 go to [www.chiefind.com](http://www.chiefind.com)





A DIVISION OF CHIEF INDUSTRIES, INC.

QUALITY MODULAR HOMES

*Details*  
make the *Difference*



Our mission is to provide unparalleled personal attention to meeting the needs of our customers while treating all stakeholders with dignity and respect, thereby ensuring our strength and stability.



*Trusted. Tested. True.*

P.O. Box 127  
111 Grant Street  
Aurora, NE 68818  
(402) 694-5250 PH • (308) 389-6749 FAX  
[www.bonnavilla.com](http://www.bonnavilla.com)



**WINDSOR**  
WINDOWS & DOORS  
A Woodgrain Millwork Company

