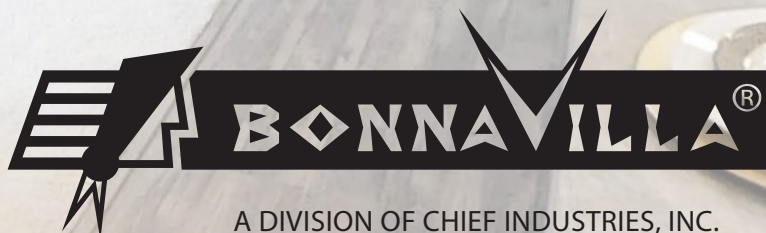


2019

INSPIRATIONS

A VISUAL GUIDE OF
DESIGN OPTIONS



A DIVISION OF CHIEF INDUSTRIES, INC.

WWW.BONNAVILLA.COM



A DIVISION OF CHIEF INDUSTRIES, INC.





TABLE OF CONTENTS

4 - 15 CUSTOMIZED EXTERIORS
(Windows, Doors, Box Bays, Siding, Dormers)

30 - 37 KITCHEN DESIGN
(Islands, Appliances)

18 - 21 CUSTOMIZED INTERIORS
(Features, Fireplaces, Storage Solutions)

38 - 39 FAUCETS

22 - 25 LIGHTING & ELECTRICAL

40 - 47 BATH DESIGN

26 - 29 CABINETS & COUNTERS

48 - 49 UTILITY

CUSTOMIZED EXTERIORS

A wide selection of framing types are available in both of our model lines ranging from 3/12 vaulted or flat ceilings to 9/12 Cape style roofs. Ask your sales representative for a list of available styles.

Add a 20' double dormer to achieve this look --- for more dormers see page 15.



9/12 CAPE ROOF
WITH 2ND FLOOR LIVING AREA



INTERIOR STAIRWAY FOR
7/12 OR 9/12 CAPE ROOFS

6/12 ROOF PITCH
(shown with 9'-0" sidewall)

Add (6) 36" wide trapezoid windows to the gable end for this look.



← If you like this look, check out our 'Chestnut' and 'Cypress' Floor Plans!

Recessed entries come standard with a LED can light.

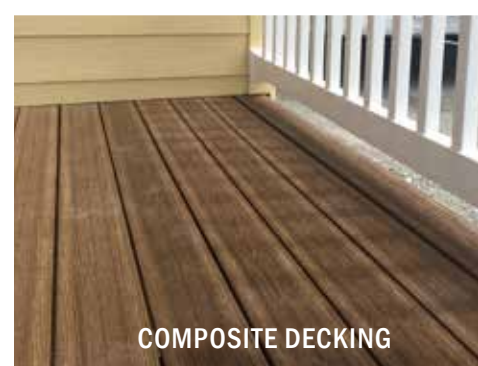


RECESSED ENTRY

cottage glass door



HIPPED ROOF OPTION-5/12 PITCH
(shown with a 24' dormer with eyebrow and return eave over triple window box bay)



COMPOSITE DECKING



CEDAR DECKING



If you like this home, check out our 'Eden' Floor Plan.

(Garages are added on site by others)

6/12 ROOF PITCH
(Add a 'pup' section to add variation to your home)



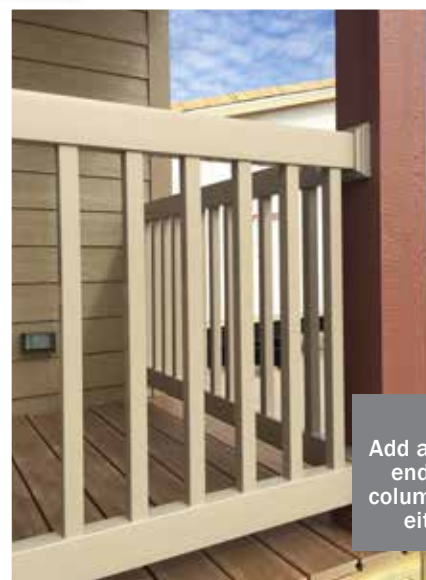
WHITE RAILINGS



Move the front door to the end of your home to make a grand entrance!

(Log posts and railings are added on site by others)

3/12 VAULTED CEILING WITH PROW END AND 6'-0" PORCH



SAND RAILINGS

Porch Railings
Add a 6'-0" or 8'-0" porch to the end of your home and choose column accent colors as well as either sand or white railings.

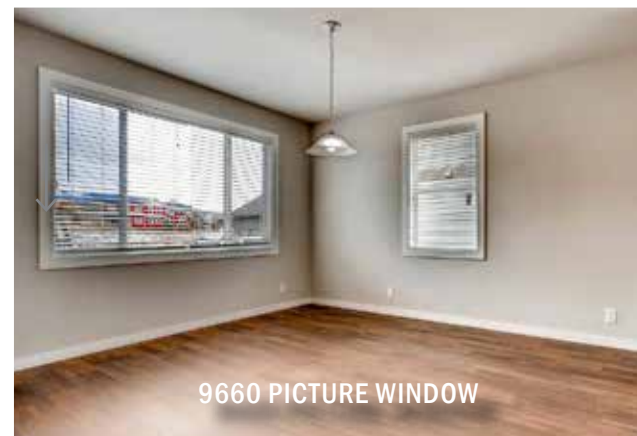
CUSTOMIZED EXTERIORS

WINDOWS

Energy efficient vinyl single-hung insulated windows are included in all of our homes. BonnaVilla features Windsor Windows. Custom Windsor windows are available in multiple configurations and sizes to fit different applications. Customers can specify single-hung or casement windows. Casement Windows are available in a white or sand vinyl finish. Single-hung windows are available in white, sand, or a bronze painted vinyl finish.



See more cabinets, countertops, and kitchens on pages 26-37.





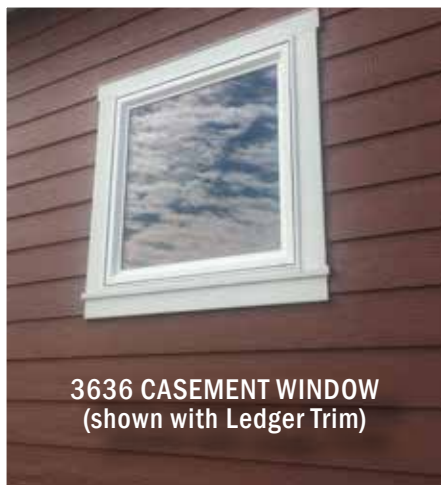
(2) 2436 & 2436
OBSCURE WINDOWS



Add a Flexible Tube Light
(commonly used in baths & utility rooms)



3232 ACRYLIC
BLOCK WINDOW



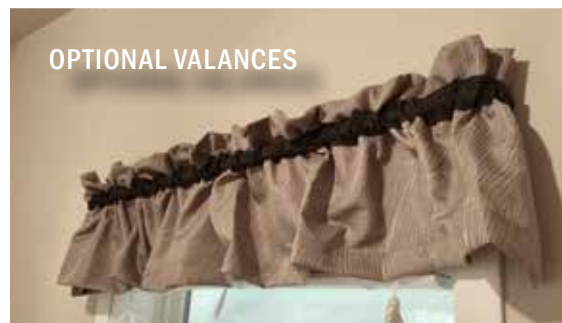
3636 CASEMENT WINDOW
(shown with Ledger Trim)



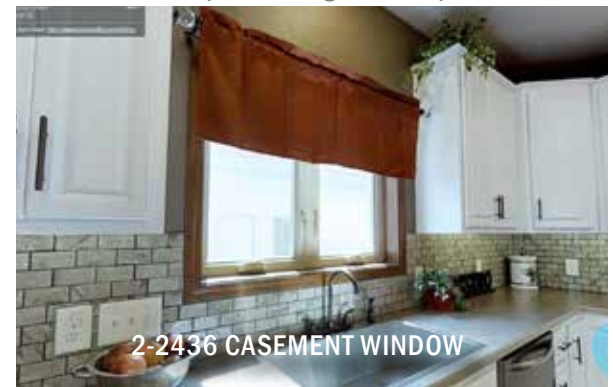
TRANSOM OVER ENTRY DOOR
(one sidelight shown)



SHUTTERS
(available in multiple colors)



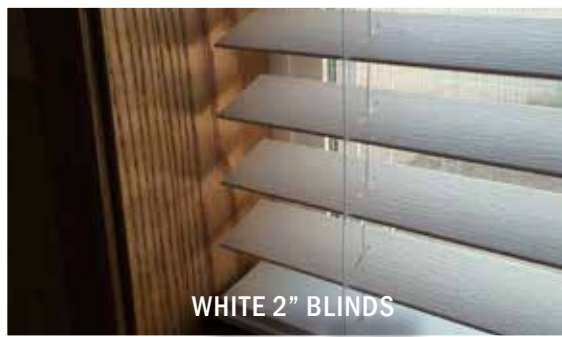
OPTIONAL VALANCES



2-2436 CASEMENT WINDOW

For additional photos of cabinets & countertops - see pages 26-37

ASK ABOUT OUR CEDAR LOOK
PAINTED SIDING
(SHOWN BELOW)



WHITE 2" BLINDS



LARGE TRAPEZOID WINDOWS
FOR UPPER GABLE OF 9/12
ROOF



BROWN 2" BLINDS

CUSTOMIZED EXTERIORS

DOORS

A large selection of exterior doors are available for your new home. Select from white, sand, or woodgrain in a variety of styles. Add either a sliding or swing patio door to create seamless transitions to an exterior deck or living space.



COTTAGE GLASS DOOR
(shown in White)



WINDSOR SLIDING GLASS
PATIO DOOR



COTTAGE GLASS DOOR
(shown in Woodgrain)

The woodgrain door options
includes a dentil accent



1/2 CLEAR GLASS DOOR
(shown in White)



COTTAGE GLASS w/ SIDELITE DOOR
(shown in Sand)



PAINTED
EXTERIOR
DOOR



WINDSOR 9' SLIDING GLASS PATIO DOOR

Ask about our other paint
colors available for the painted
exterior door option.

EXTERIOR DOOR SELECTIONS



3 Panel
(White)



3 Panel
(Sand)



Cottage Glass
Double Sidelite (White)



Cottage Glass
Single Sidelite (White)



Full Glass with
Internal Blinds
(White)



Full Glass with
Internal Blinds
(White)



Cottage Glass
(White)



Cottage Glass
(Sand)



Cottage Glass
Double Sidelite (Sand)



Cottage Glass
Single Sidelite (Sand)



1/2 Clear Glass
(White)



1/2 Clear Glass
(Sand)



3 Panel
(Woodgrain)



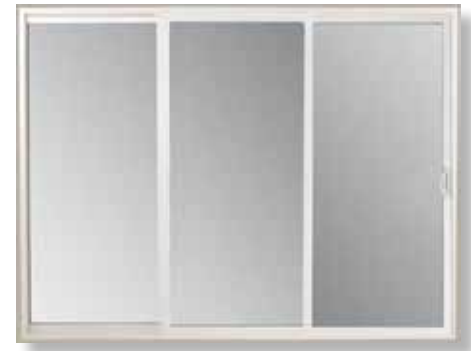
Cottage Glass
(Woodgrain)



Cottage Glass
Double Sidelite (Woodgrain)



Cottage Glass
Single Sidelite (Woodgrain)



9'-0" Sliding Patio Door
(White or Sand)

HARDWARE SELECTIONS



Nickel Ball Hardware
(Exterior/Interior Standard)



Oil-Rubbed Bronze Ball Hardware
(Exterior/Interior Option)



Nickel or Oil-Rubbed Bronze
Exterior Loop
Option



Nickel Lever Hardware
(Interior Option)
(BonnaVilla line standard)



Oil Rubbed Bronze Lever Hardware
(Interior Option)



Sliding Glass Door
(White or Sand)



Swing Patio Door
with Blinds
(White or Sand)

CUSTOMIZED EXTERIORS

Box Bays

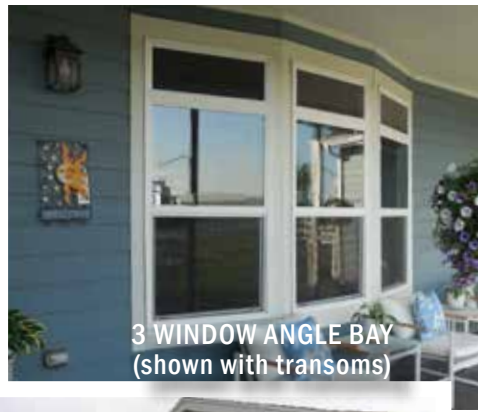
Adding any size of Box Bay can add variation among both the interior and exterior of your home. Choose from any number of window configurations and interior treatments to add that 'something extra' to living rooms, bedrooms, or even kitchen.



3 WINDOW BOX BAY
(shown with transoms
and 24' dormer with eyebrow)



2 WINDOW BOX BAY
(shown with board and batten siding)



3 WINDOW ANGLE BAY
(shown with transoms)



2 WINDOW BOX BAY
(shown with 2-3660 windows
and 20' dormer with eyebrow)



3 WINDOW BOX BAY (UNMULLED)
(shown with 24' dormer with return
eave and eyebrow)



3615 TRANSCOM
WINDOW

1 WINDOW BOX BAY
(shown with 10' dormer with
return eave)

4 WINDOW ANGLE BAY
(shown with 24' dormer with return eave
and eyebrow over recessed entry)
(available in BonnaVilla models only)

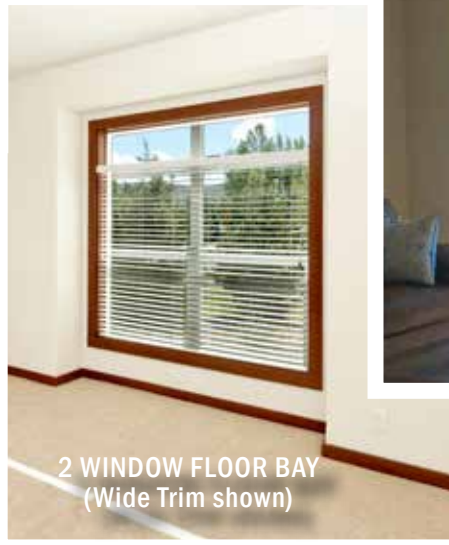
2 WINDOW BOX BAY
(shown with 7581 archtop window)



3 WINDOW FLOOR BAY
(shown with transoms)



BOX BAY - KITCHEN SINK
2-3636 Windows
(transoms not available in kitchen box bay)



2 WINDOW FLOOR BAY
(Wide Trim shown)



4 WINDOW ANGLE FLOOR BAY
(available in BonnaVilla models only)



3636 PICTURE WINDOW IN BOX BAY



BOX BAY WITH DRYWALL SEAT
7581 ARCHTOP WINDOW



BOX BAY WITH WOOD SEAT
(shown with casement windows)

WHETHER THE BOX BAY IS OPEN TO THE FLOOR, HAS A WOOD OR DRYWALL SEAT, OR IF IT HAS ONE, TWO, THREE, OR FOUR WINDOWS CONTAINED WITHIN, THERE ARE LITERALLY DOZENS OF POSSIBILITIES!

CUSTOMIZED EXTERIORS

SIDING

BonnaVilla offers numerous vinyl siding options including double 4" Dutch Lap, double 4.5" Dutch Lap (premium colors), CraneBoard double 7" lap insulated siding, Board and Batten Vinyl Siding, and Vinyl Shake.

Also offered are LP and Hardie painted siding, available in 8" Lap, Vertical Groove Panel, Board and Batten, and Shake profiles.



LP BOARD & BATTEN
shown on a Nordic Dormer
with Bronze Windows

Choose from our standard Sherwin Williams paint colors - or you have the option to choose your own!



LP PAINTED
SHAKE SIDING

BELLY BAND ACCENT



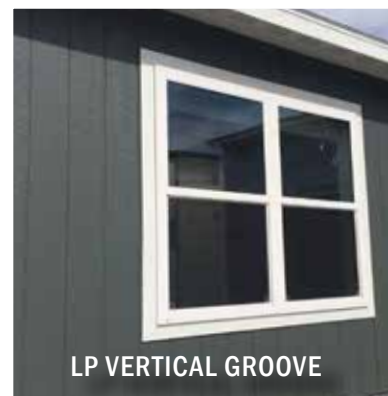
LP SMART LAP - 8" SIDING
WITH 4" TRIM



LP SMART LAP (8") SIDING
WITH CEDAR TRIM PACKAGE
AND CEDAR BOARD & BATTEN ACCENT



PORCH W/ CEDAR
DECKING, VINYL RAILINGS
& CEDAR TRIM PACKAGE



LP VERTICAL GROOVE



ACCENT COLUMNS
(shown with cedar trim package)



VINYL SHAKE ACCENT
(in dormer)

NORDIC DORMER
(shown with vinyl board and batten accent)



STONE ACCENT SIDING



**GABLE END -
EAVE RETURN OPTION**



**PRE-FINISHED METAL
SOFFIT/FASCIA**



**PAINTED SMART BOARD
SOFFIT/FASCIA**

**CRANE BOARD DOUBLE 7" INSULATED
LAP SIDING**
(shown with 4" residential trim)

**24' DORMER WITH
RETURN EAVE AND
EYEBROW**

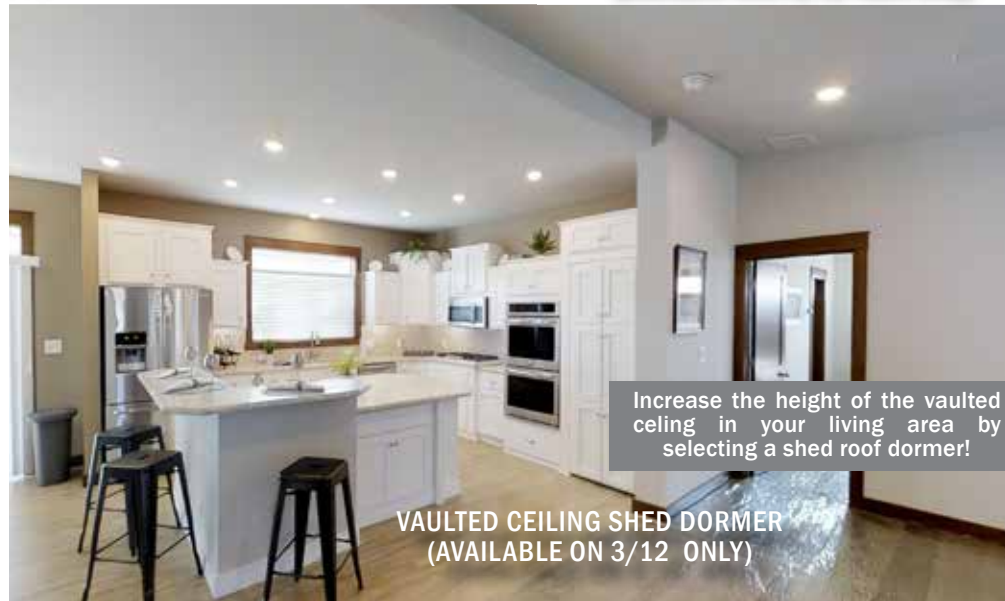
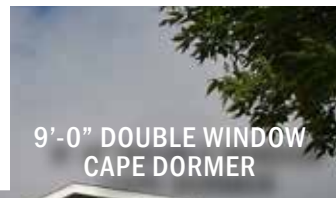


CRANE BOARD & BATTEN ACCENT
(in triple window box bay)

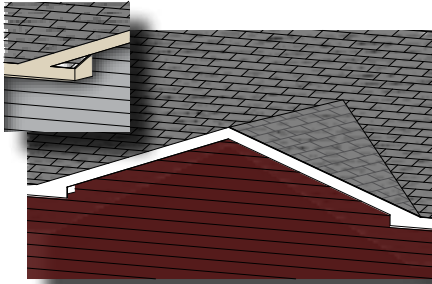
CUSTOMIZED EXTERIORS

DORMERS

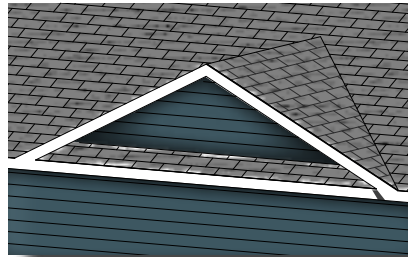
Adding any one of our various dormers to your home accents different portions of the facade. Add one above a front entry and living room window or over a box bay in a bedroom. Check out our special dormers for vaulted ceilings only.



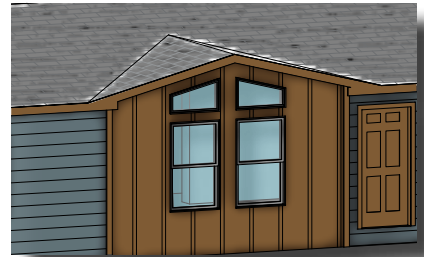
VAULTED CEILINGS ONLY



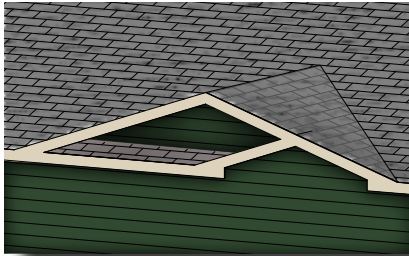
10', 16', OR 24' DORMER
OPTIONAL W/ RETURNS



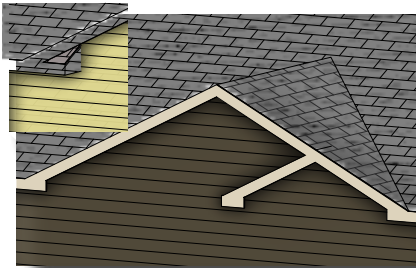
10', 16', OR 24' DORMER
W/ RETURN EAVE



2 WINDOW VAULT DORMER
(3/12 fixed roof / vault ceiling only)



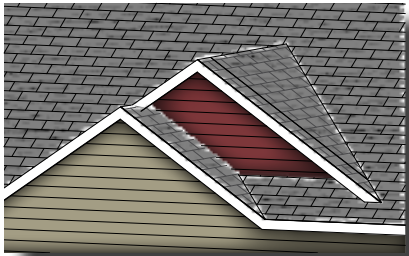
16' OR 24' DORMER
W/ RETURN EAVE AND EYEBROW



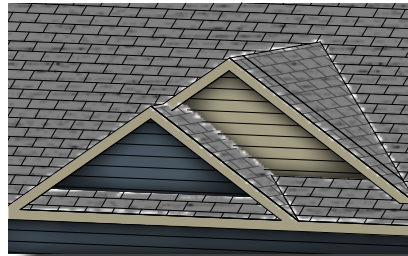
16', 20', OR 24' DORMER W/ EYEBROW
(optional w/ returns)



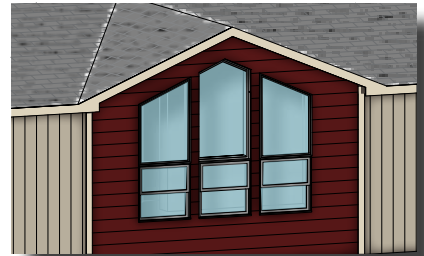
SMALL 4 WINDOW VAULT DORMER
(3/12 fixed roof / vault ceiling only)



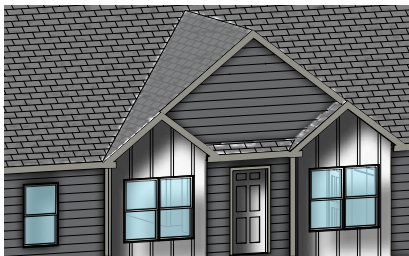
20'-0" DOUBLE DORMER



20'-0" DOUBLE DORMER W/
RETURN EAVE



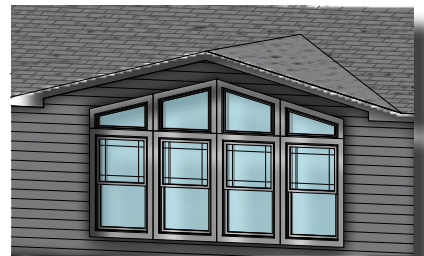
3 WINDOW VAULT DORMER
(3/12 fixed roof / vault ceiling only)



24'-0" DORMER
DOUBLE BOX BAY / EYEBROW



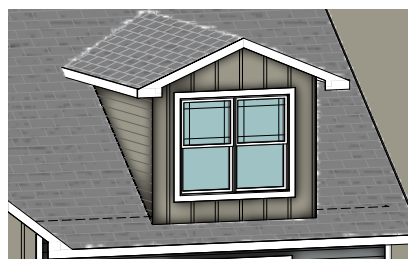
10' NORDIC DORMER
(8/12 PITCH) W/ SPOKE TRIM
(3/12 fixed roof / smart siding only)



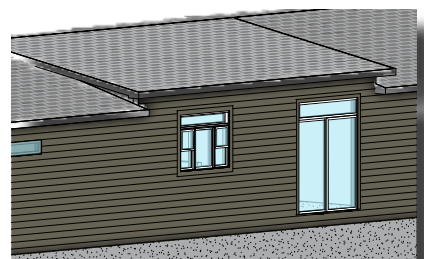
LARGE 4 WINDOW VAULT DORMER
(3/12 fixed roof / vault ceiling only)



6'-0" SINGLE WINDOW CAPE COD
DORMER
7/12 (non operable) or
9/12 (operable) roof only



9'-0" DOUBLE WINDOW CAPE COD
DORMER
7/12 (non operable) or
9/12 (operable) roof only



SHED DORMER
(3/12 fixed roof / vault ceiling only)



A DIVISION OF CHIEF INDUSTRIES, INC.

EXPANDED LIVING

DETAILS
make the DIFFERENCE



7/12 STORAGE & 9/12 CAPE OPTION

- Hinged Attic Roof Truss in 7/12 or 9/12 Roof Pitch
- Unfinished Upper Level Space (Finish Materials Not Included)
- Stairwell to Upper Floor w/ Door
- Rough-In Plumbing for (1) Upper Level Location (9/12)
- Insulated Floor (Ceiling of Lower Level)
- (1) Window Shipped Loose for Each End of Upper Level (Total of 2)



ENERGY EFFICIENCY

DETAILS
make the DIFFERENCE



Energy Efficiency Features

Efficient Vinyl Windows

Ensures energy isn't lost through the windows.

Blown-in Ceiling Insulation

Allows for better coverage and reduces chances for voids or cold spots.

Formaldehyde-Free Batt Wall Insulation

Will not settle, which decreases chances of voids or cold spots.

Foam Sealed Protrusions

Keeps conditioned interior air in, and unconditioned exterior air out.

Perimeter Floor Insulation

Creates a continuously insulated foundation wall beneath the floor

Metal Supply Air Ductwork

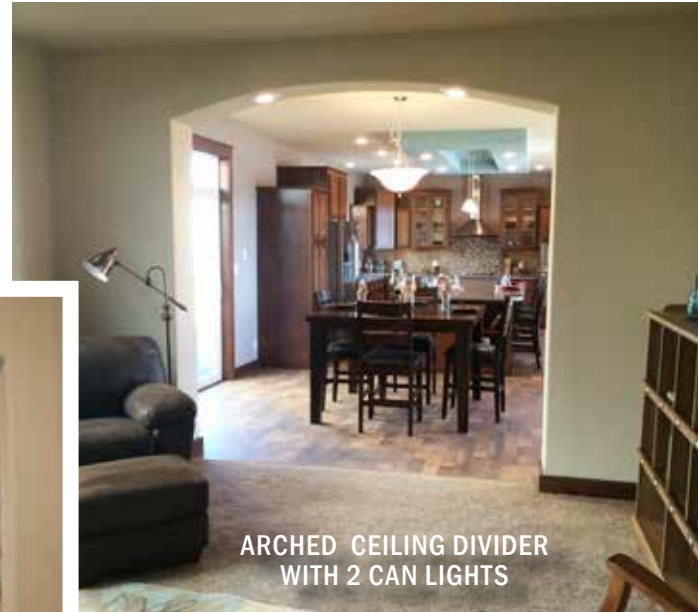
Allows for higher efficiency and lower friction air flow - completely sealed with tape and mastic



CUSTOMIZED INTERIORS

FEATURE OPTIONS

Add a custom touch to any room in your home by selecting from these features in our 'Interior Option' list. Whether it's a simple splash of accent paint, an arched entry with can lights, a fireplace, or storage solutions, these features will make your home stand out.



ARCHED CEILING DIVIDER WITH 2 CAN LIGHTS



Partial Height Wall/
Plant Ledge Cap

ARCHED ENTRY
(Wall Opening & Entry)
(shown with optional plant ledge)



ARCHED WALL OPENING

Choose from a variety of our interior options to make your home truly unique.



COFFERED CEILING WITH
ROPE LIGHT, COVE TRIM, AND
ACCENT PAINT

BEDROOM SOFFIT WITH
3 CAN LIGHTS
& 3 TRANSOMS

Add accent paint to the wall, soffit, and coffer to achieve this look!



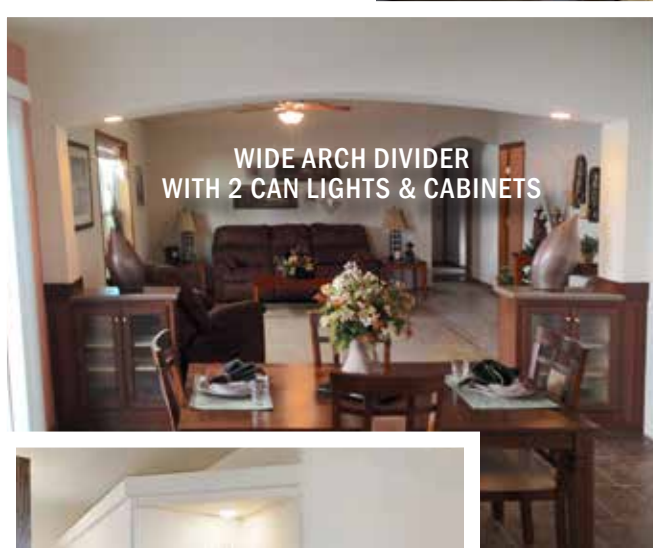
FEATURE WALL



ARCHED OPENING



FLOATING SHELF
BOOKSHELF OPTION



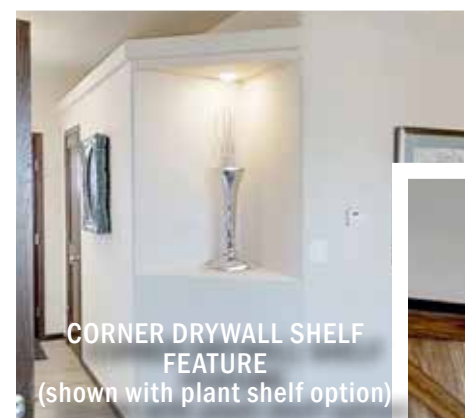
WIDE ARCH DIVIDER
WITH 2 CAN LIGHTS & CABINETS



ARCHED CEILING WITH 2 CAN LIGHTS
(over kitchen bar)



Turn to Page 20 for more
fireplace options!



CORNER DRYWALL SHELF
FEATURE
(shown with plant shelf option)



DRYWALL ARCHED OPENING /
PLANT LEDGE/ COLUMNS



BARNWOOD WALL
WAINSCOT ACCENT



SOLID CORE
BARN DOOR



FLOATING SHELVES
TUB SHELF OPTION

BARNWOOD
BARN DOOR

CUSTOMIZED INTERIORS

FIREPLACES

Add a fireplace option to your home to create warmth and visual focus in any room. Fireplaces come standard with a raised hearth. Choose either stone or one of our tile colors to complete the option.



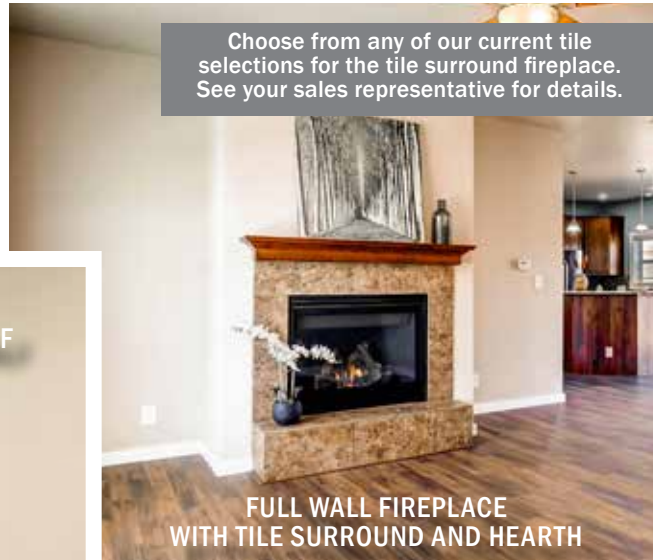
FULL WALL STACKED STONE SURROUND-FULL FIREPLACE (with stone mantel)



FULL WALL CORNER STACKED STONE SURROUND HALF FIREPLACE



Choose to vent your fireplace horizontally or vertically. (horizontal shown at right)



FULL WALL FIREPLACE WITH TILE SURROUND AND HEARTH

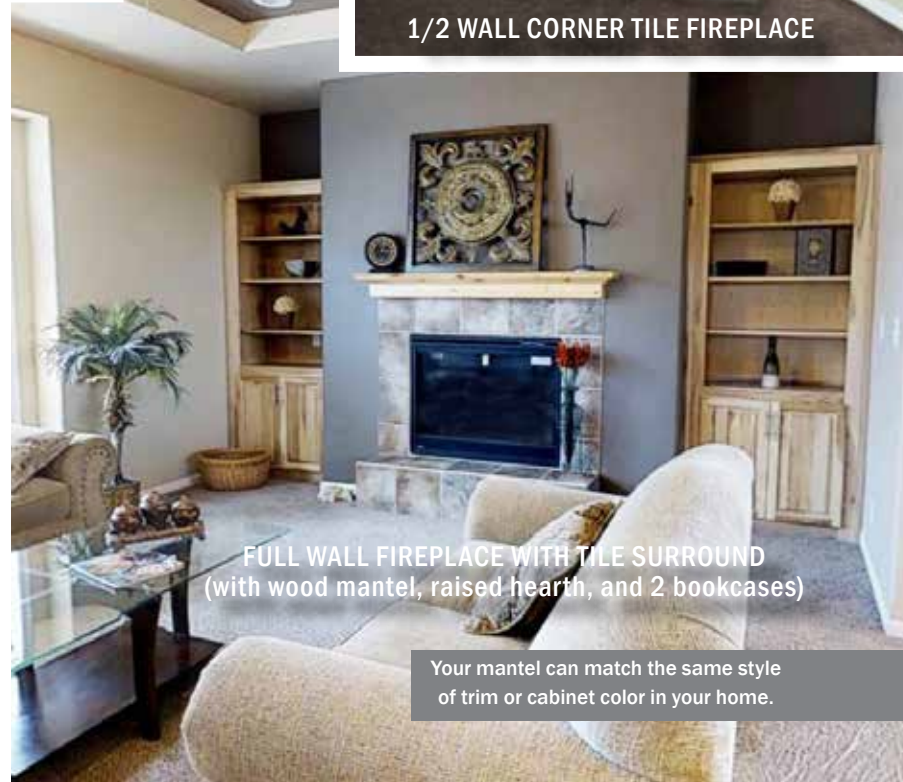
Choose from any of our current tile selections for the tile surround fireplace. See your sales representative for details.



1/2 WALL CORNER TILE FIREPLACE



FULL WALL STACKED STONE SURROUND-FULL FIREPLACE (with mantel and raised hearth)



FULL WALL FIREPLACE WITH TILE SURROUND (with wood mantel, raised hearth, and 2 bookcases)

Your mantel can match the same style of trim or cabinet color in your home.

CLOSETS

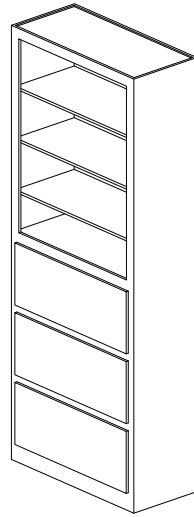
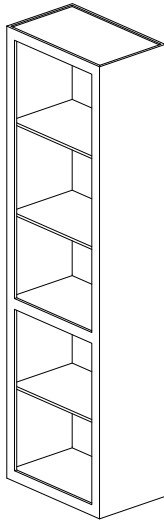
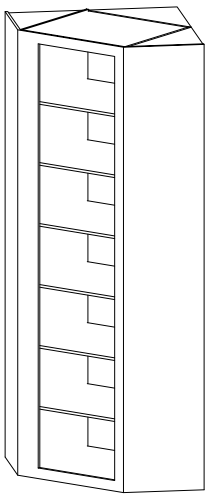
STORAGE SOLUTIONS

It's your space. Design your closet arrangement and customize your storage to fit your lifestyle.

CORNER SHELF

24" WIDE LINEN SHELF

33" WIDE DRAWER & SHELF



Available in White Finish Only



CORNER SHELF

DRAWER & SHELF



WOOD SHELVING



WIRE SHELVING



RECESSED MEDIA BOX



TILED FIREPLACE
(raised off floor/hearth omitted)



33X24 OPENING IN STONE

SPLITFACED STONE
RECESSED LEDGER WALL FIREPLACE
(available with stone mantel only/no hearth)



42 LINEAR GAS

SPLITFACED STONE FIREPLACE
(raised off floor / no hearth available)
(shown with floating shelves)

LIGHTING & ELECTRICAL

Light fixtures are an accent to any room. BonnaVilla offers a variety of light fixtures for each room in your home. Whether your preference is an oil-rubbed bronze or a nickel finish, there is a lighting package to match both your budget and your style. A level 1 lighting package is available as a standard in the BellaVista line, while the level 2 lighting package is an available upgrade (or standard in the BonnaVilla model line). An LED lighting package is an upgrade for both model lines.



Level 1, 2-bulb (VA) light fixture



Level 1, 1-bulb (KA) light fixture
(Kitchen Sink, Hallways, Closets)



Level 1, Sconce (SC)
light fixture - (Stairways/
optional light)
(Bronze shown)



Level 1, 2-bulb (BA) light fixture
(Bedrooms, Master Bedroom Closet,
Utility Rooms, and Kitchens)
(Nickel shown)

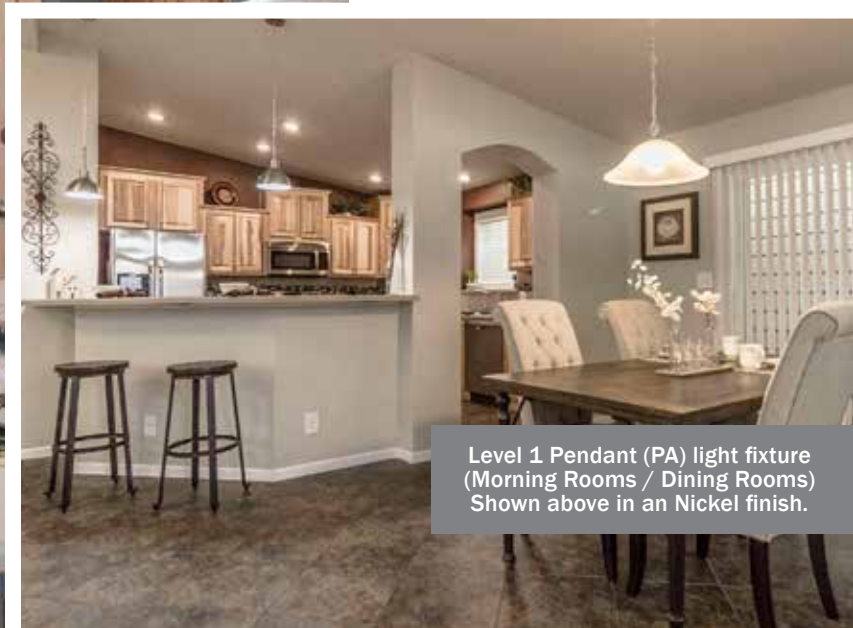


Exterior Light (E) BellaVista Exterior Light/
BonnaVilla rear door light only



Can Light (4LED)

Kitchen
Stem Light
(SA) or (S)



Level 1 Pendant (PA) light fixture
(Morning Rooms / Dining Rooms)
Shown above in a Nickel finish.



Classic Stem light fixture (S) or (SA) (Nickel shown)



Moderno Stem light fixture (S) or (SA) (Bronze shown)



48" LED Light (48LED) standard in BonnaVilla utility rooms



3 LED Light (3LED) Commonly installed in closets for added light.



UPGRADED ENTRY LIGHT (DI)



Level 2 Wall Sconce (SC) light fixture (Stairway/Per Customer Request)

Level 2, 2-bulb (B) (Bedrooms, Master Bedroom Closet, Kitchen)

Level 2, 2-bulb (K) (Entry, Halls, Closets)



Level 2 Pendant (P) light fixture (Morning/Dining Room)

Level 2 Pendant (P) light fixture (Morning Rooms / Dining Rooms) Shown above in an ORB finish.



Bath Fan/Light (BF)

Can Light (4 LED)

Level 2 Vanity (V) Fixture



Exterior Light (DL) Upgraded Exterior DownLight

Exterior Light (DE) BonnaVilla Exterior Light (Front door and Sliding Glass Door)

ALL LIGHTING AVAILABLE IN NICKEL OR OIL-RUBBED BRONZE FINISH!

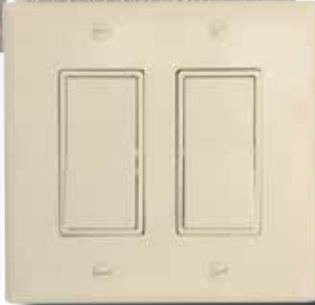
LIGHTING & ELECTRICAL

With a multitude of electrical and lighting options available, your home can be functional yet stunning. We offer both traditional switches and receipts (toggle style) in our BellaVista line with an option to upgrade (rocker style/decor), which is standard in the BonnaVilla line.

A home comes standard with (2) exterior GFCI receipts - we can add additional upon request.



Toggle Switches
(shown in White)
(standard in BellaVista)



Decor Switches
(shown in Almond)
(standard in BonnaVilla)



A/C DISCONNECT
(includes double pull 30
Amp breaker with 10-2
wire)



PANEL BOX COVER



PANEL BOX
(optional to drop
panel to basement)



USB OUTLET

Add optional LED can lights to the soffit of the home for accenting different features of the facade.



EXTERIOR SOFFIT CAN LIGHT

Add a USB/recept to an office or countertop area where charging items is a must.



Moderno Stem light fixture
(S) or (SA)

A 4" LED can light is standard in the BonnaVilla line over the sink - optional in the BellaVista line.



EXTERIOR WALL LIGHT (ELED)

Replaces the rear door and endwall lights

LED PACKAGE



4LED LIGHT

Replaces the hall (1), vanity (2), walk-in/non walk in closet (1), kitchen sink (1), utility room (1), and exterior door sidewall (1) lights



14LED LIGHT

Replaces the bedroom, dining room, morning room, and kitchen ceiling lights



LED Ceiling Fan (Nickel shown)



LED Bath Fan with Light (BFLED)

Level 1 Vanity (VA) Fixture



UNDER CABINET LIGHTING



LED MIRROR (includes (1) can light centered above vanity)

ARCHED OPENING

ARCHED CEILING AND CAN LIGHTS OVER TUB



CABINETS & COUNTERTOPS

The Cabinetry and Counter Surface selections you have available are countless. BonnaVilla offers laminate countertops with straight profile edge, Stone FX laminate with bullnose edging, laminate countertops with solid surface edge, solid surface, quartz, and granite countertops. In each of these styles, there are a variety of color selections available.



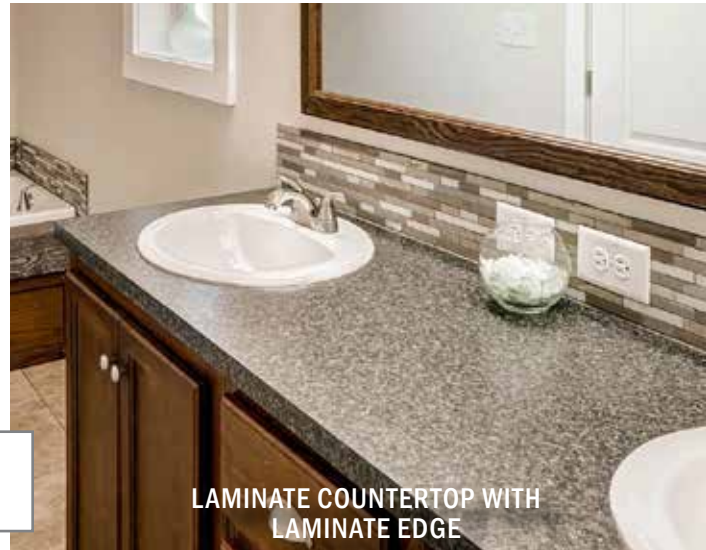
Mocha cabinetry, 6" backsplash, and oil-rubbed bronze hardware

LAMINATE COUNTERTOP WITH SOLID SURFACE EDGE



Dusk oak cabinetry, 6" mosaic backsplash, and nickel hardware

STONE FX COUNTERTOPS WITH CRESCENT EDGING



LAMINATE COUNTERTOP WITH LAMINATE EDGE

FOR APPLIANCE SELECTIONS - SEE PAGE 36-37



42" Stratford head cabinets, subway tile backsplash, stone fx countertops with solid surface edging, and nickel hardware

Check out our Joshua Floor Plan to see the rest of this beautiful home.



SOLID SURFACE COUNTERTOP WITH SOLID SURFACE BACKSPLASH

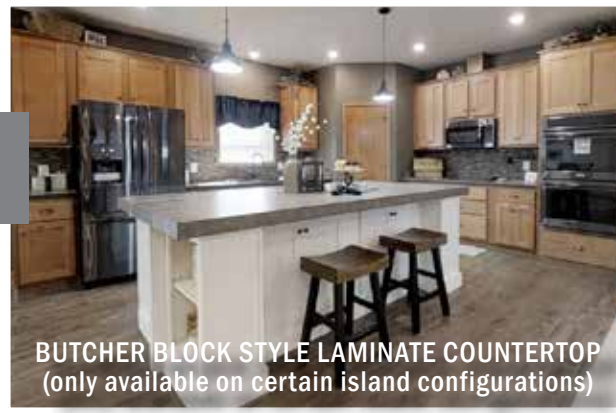


QUARTZ COUNTERTOPS WITH WHITE CABINETRY
(shown at island only)



GRANITE COUNTERTOPS
(shown with undermount stainless steel sink
and level 2 high-arch faucet)

Black Stainless Steel Appliances are now available! See page 36 for additional information on appliances.



BUTCHER BLOCK STYLE LAMINATE COUNTERTOP
(only available on certain island configurations)



STONE FX COUNTERTOP
WITH SOLID SURFACE EDGE

STRATFORD WHITE CABINETRY
(staggered head cabinets)



HIDDEN PANTRY

ILR23 ISLAND
(featuring Stone FX countertops)

CABINETS & COUNTERTOPS

Pair your cabinetry with the counter surface you desire. BonnaVilla offers many different cabinetry wood types and styles to suit your preference including white, oak, dusk oak, hickory, and alder. After choosing cabinetry one can also choose nickel or an oil-rubbed bronze hardware package.

BonnaVilla offers many pre-designed built-in features including bookcases, entry hall trees, cubby benches, locker benches, and entertainment centers. If you have a room needing a little built-in flare, these pieces are for you!



BAR PULL HARDWARE OPTION

METAL TILE EDGING
(available in nickel or oil-rubbed bronze)

Dovetailed drawers are optional in the BellaVista Series, standard in the BonnaVilla Series.

For more photos of this home, check out the 'Joshua' Photo Gallery on our website. www.BonnaVilla.com

DUSK CABINETS AND STONE FX LAMINATE COUNTERTOPS WITH SOLID SURFACE EDGE
(shown with nickel cabinet hardware and 6" backsplash)



STRATFORD WHITE CABINETS AND STONE FX LAMINATE COUNTERTOPS WITH SOLID SURFACE EDGE

(shown with nickel bar pull hardware and 6" mosaic backsplash)



Select two bookcases with a stone to ceiling fireplace to achieve this look. One can choose to place a television above the fireplace as well.



ENTRY HALL TREE



CABINET CONSTRUCTION FEATURES

Wood, Dadoed Corner Supports
Machine Fabricated Cabinet Components
Dovetailed Drawer Box Construction
1/2" Side Panel Box Construction, Dadoed, Glued, and Fastened 100 lb.
Rated, Hidden Metal Drawer Glides
Solid Hardwood 3/4" Face Frames and Styles - Pocket Screwed
3/4" Wood Shelf Stock
Drawer over Door Kitchen Base Cabinet

Add a desk area in a hall nook, den, or extension of the kitchen for a convenient office storage workspace. Add a recessed linen in a hall or bath for a built-in feature.



ENTERTAINMENT CENTER



BOOKCASE

STUDY DESK
(shown with optional bookcases and additional base and head cabinetry)



RECESSED LINEN

KITCHEN DESIGN

The kitchen is the gathering place of the home and with our wide variety of available options, you can make it stand out. BonnaVilla offers a vast array of kitchen styles with numerous options to choose from. Whether you're looking at glass cabinet doors, different styles of backsplash tiles, cabinetry accessories, and more - you can make your kitchen truly unique.



CUTLERY DRAWER

Featured in this custom kitchen are hickory cabinets, solid surface countertops, tile to head cabinets with mosaic accent band, and a 3636 Casement window above the sink.



Lazy susan cabinet options available in corner base and corner head cabinets



UNSTAGGED OVERHEAD KITCHEN CABINETS

The "Ironwood" kitchen with ILR23 island showing Stratford Mocha cabinetry, tile to the head cabinets with mosaic accent, and stone fx laminate countertops with solid surface edging.

STAGGED OVERHEAD KITCHEN CABINETRY (shown with shaker cabinet crown molding)



DECORATIVE HIDDEN RANGEHOOD



MICROWAVE/30" WALL OVEN



SINGLE POT AND PAN PULL OUT



CUTTING BOARD



SPICE RACK



COOKIE SHEET ORGANIZER



DUAL POT AND PAN PULL OUT



PANTRY CABINET (with Pull Outs)



18" DOUBLE GARBAGE CAN PULL OUT



15" BASE ORGANIZER (with cutting board)



TIP-OUT SINK FRONT

KITCHEN STORAGE SOLUTIONS

UNSTAGGERED OVERHEAD KITCHEN CABINETRY (shown with standard cabinet crown molding)

27 cu.ft. Refrigerator w/ Bottom Freezer (shown with a refrigerator side panel) see page 36-37 for more appliances

Pantry cabinets available in 15", 18", and 27" widths

SOLID SURFACE COUNTERTOP (shown with undermount stainless steel sink)

KITCHEN DESIGN

With a variety of cabinet styles, counter surfaces, fixtures, and appliances to choose from, every home built in our factory is unique and customized to the homeowner. Whether your dream design theme is a mountain retreat or a refreshing modern escape, our color schemes can help you achieve the look you desire.

A multitude of combinations can be achieved with different counter surfaces and tile combinations. Check out a few of the styles available in the kitchens on these few pages!



VEGGIE SINK



SINGLE BOWL STAINLESS STEEL SINK



APRON STYLE FARM SINK
(available in White or Black)



STAINLESS STEEL DOUBLE BOWL SINK



COMPOSITE KITCHEN SINK
(available in Mocha, Black or Natural)



Like the look of this Arch-Top Window? See other windows available on page 6-7.

STANDARD CROWN MOLDING

SINGLE BOWL STAINLESS STEEL FARM SINK

Stratford Dusk Cabinetry, Subway Tile Backsplash, and Stainless Steel Appliances.



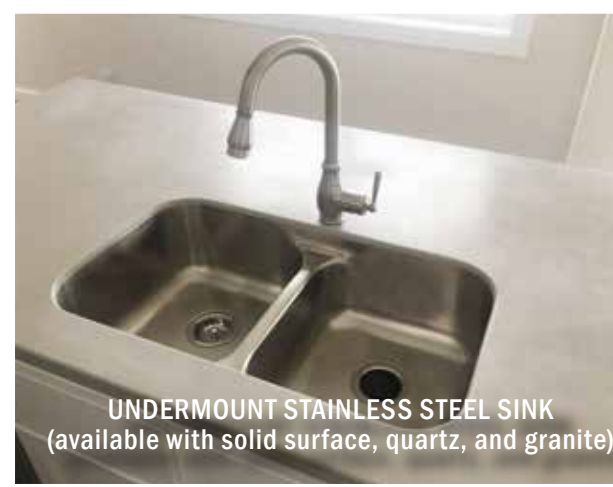
Microwave vented to the exterior of the home (instead of recirculating)

Cedar XL Kitchen showing Stratford Dusk Cabinetry, Unstaggered 42" Head Cabinets, and Full Mosaic Tile to the Head Cabinets

TILE TO HEAD CABINETS WITH FULL MOSAIC BACKSPLASH



TILE TO HEAD CABINETS WITH FULL MOSAIC BEHIND RANGE

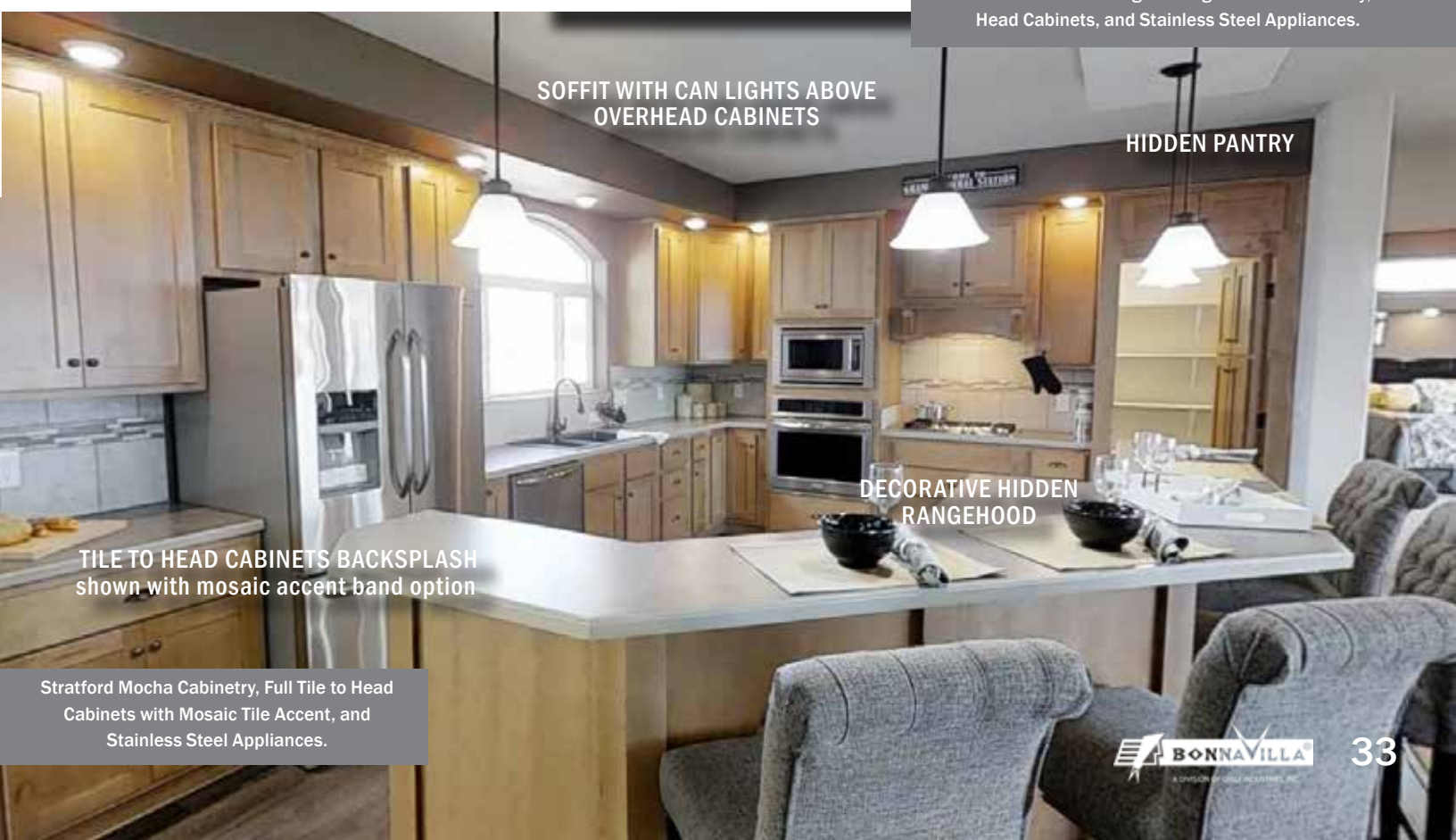


UNDERMOUNT STAINLESS STEEL SINK (available with solid surface, quartz, and granite)



6" BACKSPLASH

Cedar XL Kitchen showing Kensington Dusk Cabinetry, 30" Head Cabinets, and Stainless Steel Appliances.



SOFFIT WITH CAN LIGHTS ABOVE OVERHEAD CABINETS

HIDDEN PANTRY

DECORATIVE HIDDEN RANGEHOOD

TILE TO HEAD CABINETS BACKSPLASH shown with mosaic accent band option

Stratford Mocha Cabinetry, Full Tile to Head Cabinets with Mosaic Tile Accent, and Stainless Steel Appliances.

KITCHEN DESIGN

ISLANDS

The center of the kitchen is the hub of activity. An island counter surface is extremely helpful for food preparation, serving, and can double as an informal dining area. BonnaVilla has more than 35 island designs available for you to choose from. With different cabinetry options paired with your choice of countertop styles and colors - the variety of looks are endless.



ILR23 KITCHEN ISLAND
(shown below with wine cooler)



IL18 KITCHEN ISLAND



IL18 KITCHEN ISLAND
(shown with butcher block style laminate countertop)



Two of BonnaVilla's most popular kitchen islands, the ILR06 and ILR22 come standard with a soffit and 4 stem lights on a flat ceiling.

ILR22 KITCHEN ISLAND
(ILR06 removes sink and dishwasher)



ILR22 KITCHEN ISLAND



ILR05 KITCHEN ISLAND



ILR04 KITCHEN ISLAND
(shown with double deep drawer bank)



ILR18 KITCHEN ISLAND



ILR10 KITCHEN ISLAND

FOR ADDITIONAL ISLAND CONFIGURATIONS - CONTACT YOUR LOCAL SALES REPRESENTATIVE!



IL13 KITCHEN ISLAND



IL11 KITCHEN ISLAND



IL22 KITCHEN ISLAND



IL09 KITCHEN ISLAND



IL16 KITCHEN ISLAND

The IL17 kitchen island includes a soffit, 4 LED can lights, and 2 stem lights (additional stem light shown)

The ILR05 island includes a raised seating area. (shown with an optional double deep drawer bank)



CHIMNEY RANGE HOOD





MICROWAVE/30" ELECTRIC WALL OVEN

IL17 KITCHEN ISLAND

KITCHEN DESIGN

APPLIANCES

AVAILABLE FINISHES

-  White
-  Stainless Steel
-  Black
-  Black Stainless Steel

Standard Appliances

2 cycle dishwasher
electric coil-top range
18.2 cu.ft. refrigerator

Upgrade Package Level 1

2 cycle dishwasher
gas/electric self-clean range
23 cu.ft. refrigerator

Upgrade Package Level 2

4 cycle dishwasher
gas/electric self-clean range
27 cu.ft. refrigerator

(All options include a recirculating rangehood)

DISHWASHERS



2 CYCLE
DISHWASHER



4 CYCLE
DISHWASHER



7 CYCLE
DISHWASHER

*8 CYCLE DISHWASHER AVAILABLE IN BLACK STAINLESS STEEL

RANGES



ELECTRIC
COIL-TOP RANGE



ELECTRIC
SELF-CLEAN
CERAMIC TOP RANGE



GAS
SELF-CLEAN RANGE



18.2 CU.FT.
TOP/BOTTOM
REFRIGERATOR



21 CU.FT.
TOP/BOTTOM
REFRIGERATOR



23 CU.FT. W/ICE
SIDE-BY-SIDE
REFRIGERATOR

REFRIGERATORS



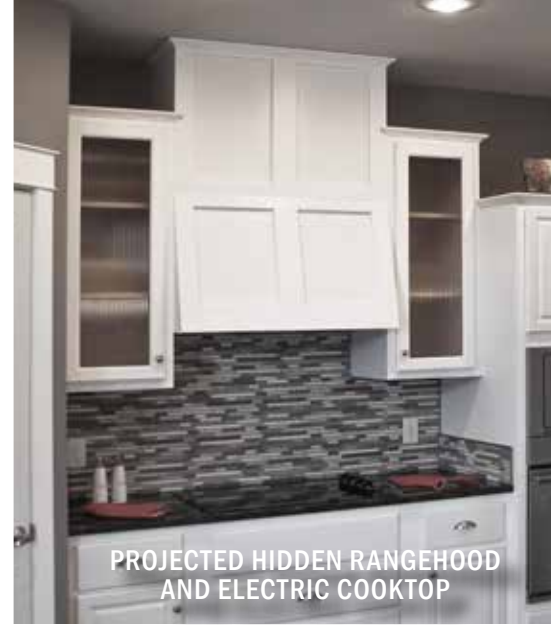
26 CU.FT. W/ ICE
SIDE-BY-SIDE
REFRIGERATOR



27 CU.FT. W/ ICE FRENCH DOOR
REFRIGERATOR



FULL SIZE, SINGLE DOOR
REFRIGERATOR/FREEZER COMBO



PROJECTED HIDDEN RANGEHOOD AND ELECTRIC COOKTOP



CURVED GLASS CHIMNEY RANGEHOOD

GAS COOKTOP

MICROWAVE/30" WALL OVEN



DECORATIVE HIDDEN RANGEHOOD AND GAS COOKTOP



FULL SIZE, SINGLE DOOR REFRIGERATOR/FREEZER COMBO

INDIVIDUAL APPLIANCE UPGRADES AVAILABLE
(BLACK, WHITE, STAINLESS STEEL, OR BLACK STAINLESS STEEL)



30" SINGLE ELECTRIC WALL OVEN (IN CABINET)



30" DOUBLE ELECTRIC WALL OVEN (IN CABINET)



30" MICROWAVE/OVEN (IN CABINET)



WINE COOLER (STAINLESS STEEL ONLY)



CHIMNEY RANGE HOOD (STAINLESS STEEL ONLY)



MICROWAVE (OVER THE RANGE)



MICROWAVE (BUILT-IN CABINET)



CURVED GLASS CHIMNEY RANGE HOOD (STAINLESS STEEL ONLY)



ELECTRIC COOKTOP BUILT IN CABINET W/ DRAWERS (BLACK ONLY)



36" ELECTRIC COOKTOP BUILT IN CABINET W/ DRAWERS (BLACK ONLY)



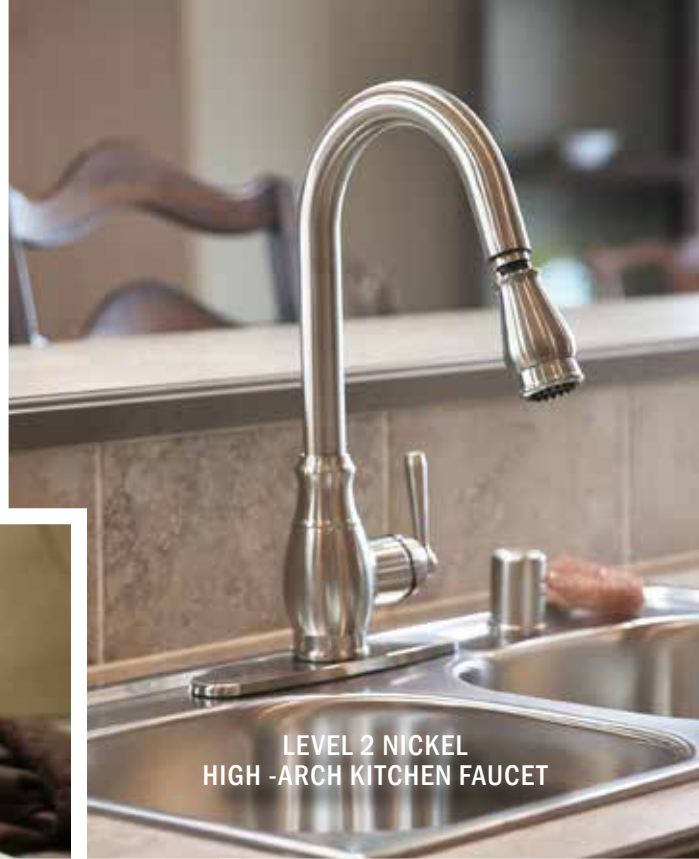
36" STAINLESS COOKTOP BUILT IN CABINET W/ DRAWERS (STAINLESS STEEL ONLY)



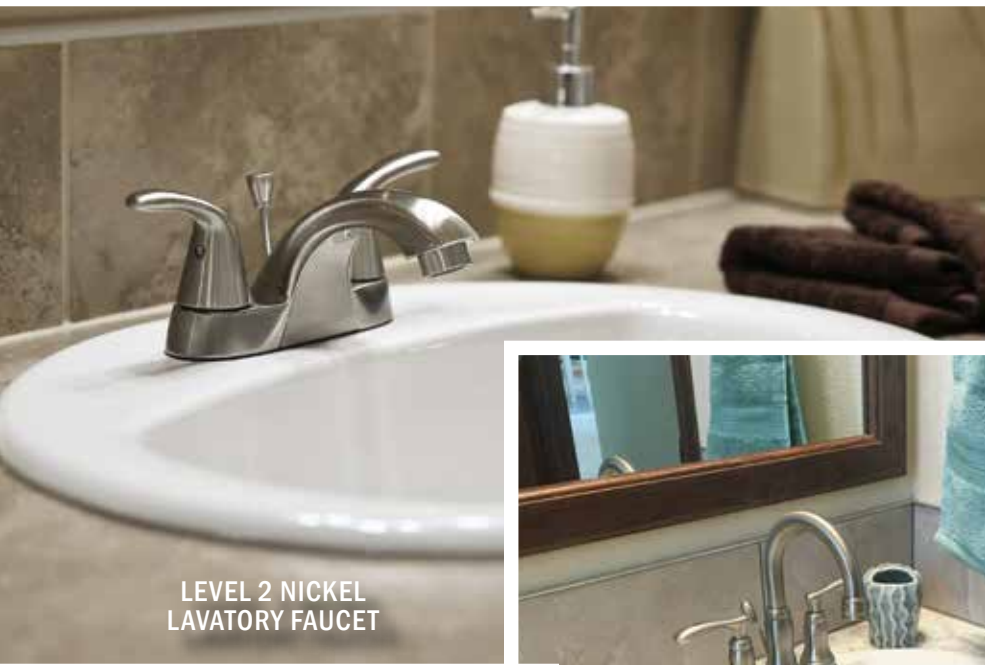
GAS COOKTOP BUILT IN CABINET W/ DRAWERS (STAINLESS STEEL ONLY)

FAUCETS

Whether you like the appearance of nickel, or oil-rubbed bronze we offer a variety of faucets in either finish. Select from any three of our package levels to make choosing faucets a simple task.



LEVEL 2 NICKEL
HIGH-ARCH KITCHEN FAUCET



LEVEL 2 NICKEL
LAVATORY FAUCET



LEVEL 3 ARTISAN
LAVATORY FAUCET



LEVEL 3 ARTISAN
BAR/UTILITY FAUCET

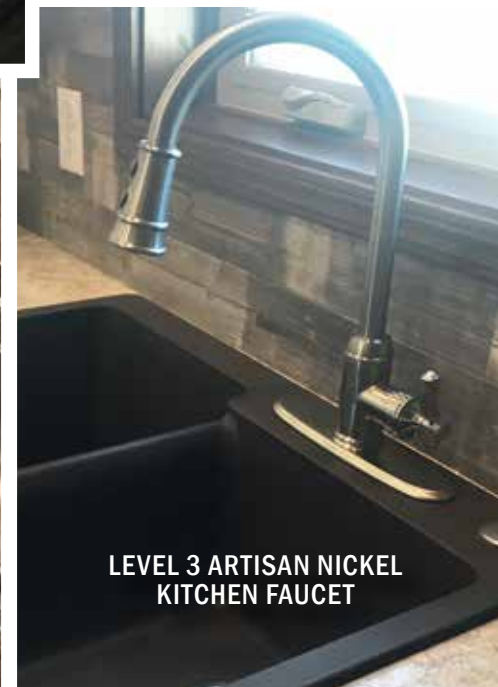
SEE ADDITIONAL PHOTOS OF
LAVATORY, SINK, BATHTUB,
AND SHOWER FAUCETS SHOWN
THROUGHOUT THE KITCHEN AND
BATH DESIGN SECTIONS!



POT FILLER
(shown in oil-rubbed bronze)



LEVEL 2 NICKEL KITCHEN FAUCET
(shown with 19" Stainless steel sink)



LEVEL 3 ARTISAN NICKEL
KITCHEN FAUCET

Level 1 - Nickel Only



LAVATORY FAUCET



TUB/SHOWER FAUCET
29814/31184
29813/31185



TUB FAUCET
29806/05



KITCHEN FAUCET

LEVEL 2 (Brushed Nickel or Oil-Rubbed Bronze)



LAVATORY FAUCET
29795/29794



TUB/SHOWER FAUCET
29814/31184
29813/31185



TUB FAUCET
29806/05



KITCHEN FAUCET
29818/29817



HIGH-ARCH FAUCET
29923



BAR/UTILITY
29790/29791

LEVEL 3- ARTISAN (Brushed Nickel or Oil-Rubbed Bronze)
(Upgrade Package)



LAVATORY FAUCET
525840/525832



TUB/SHOWER FAUCET
545756/545764



TUB FAUCET
525022/525030



KITCHEN FAUCET
524702/524728



BAR/UTILITY FAUCET
525113/525121

OPTIONAL FAUCET UPGRADES



SINGLE LEVER
LAVATORY FAUCET
31458314



POT FILLER
(with cooktop option only)



RAINFALL
SHOWERHEAD



HANDHELD
SHOWERHEAD

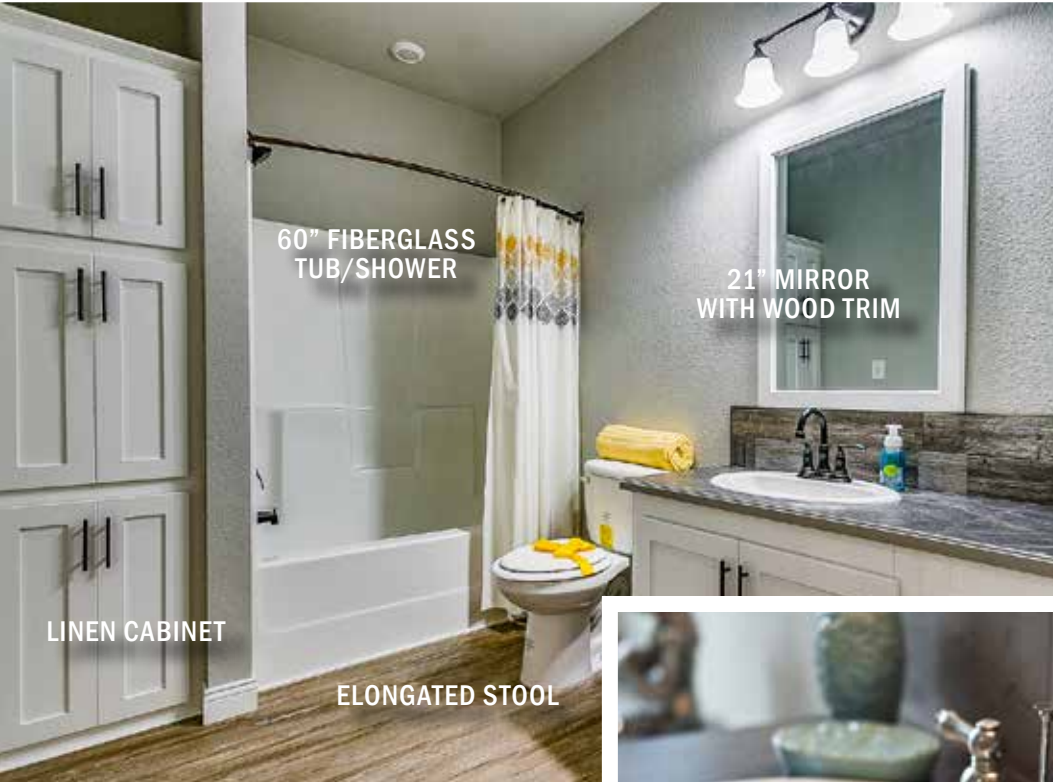
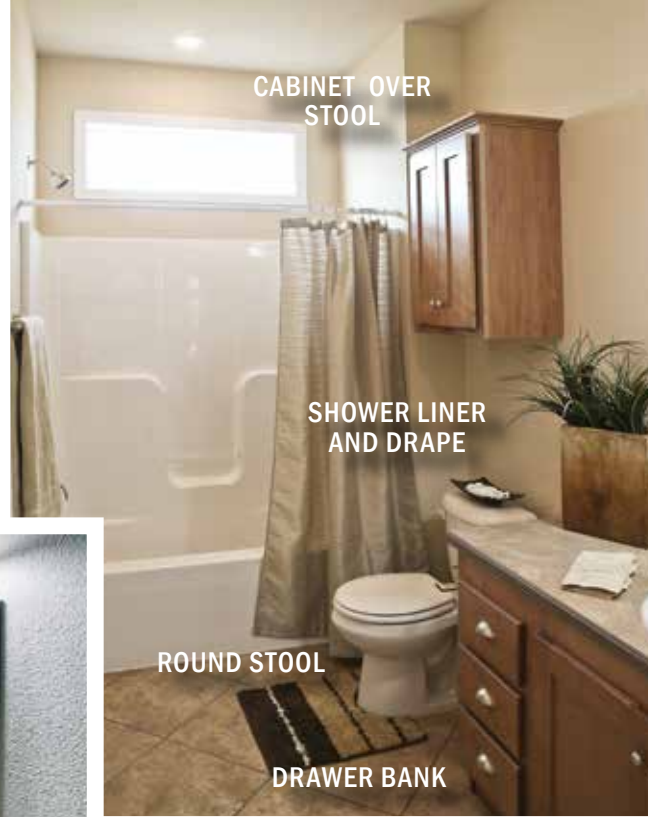


VESSEL SINK
LAVATORY FAUCET

BODY JETS

BATH DESIGN

A bathroom is to be functional yet a private retreat. With our many options available one can choose from a variety of layouts, fixtures, hardware, and finish selections. Don't forget to add extra drawer banks or liners for added storage space.



The Monogram Vanity includes 36" tall vanities (with cubby space below) on furniture leg pedestal bases, a raised 42" center drawer bank, and a center cabinet on the counter.

The Grand Vanity includes deeper vanity cabinets and linen cabinets on top of the counter.



Add a linen cabinet or a linen cabinet with drawers for additional storage in your bathroom.

LINEN CABINET
(available in 15", 18", 21" 27",
30", 33", and 36" widths)

42" TRANSOM

2436 OBSCURE WINDOW

Add a bathroom window!
We offer single-hung clear, single-hung obscure, fixed, 32" block, or transom sizes!

60" FIBERGLASS SHOWER (NICKEL)



ENCLOSED STOOL COMPARTMENT



RECTANGLE LAVATORY SINK

Like the looks of this vanity?
See more Oasis Bathroom Options on page 46!



DRAWER LINEN CABINET



21" MIRROR WITH SQUARE TRIM

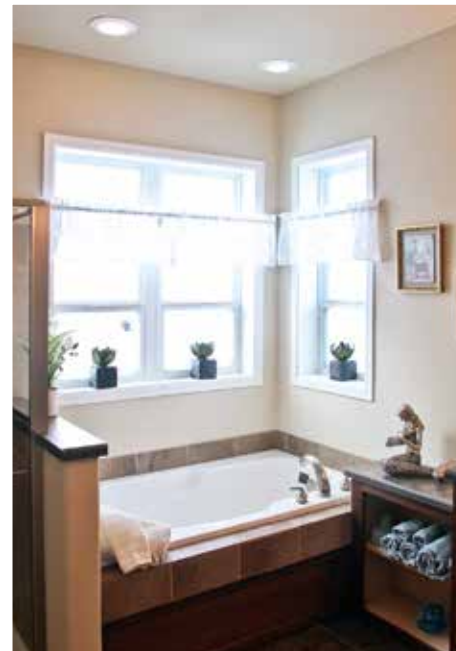
PEDESTAL SINK



OASIS MIRROR WALL VANITY

Monogram Bathroom

DETAILS make the DIFFERENCE



Monogram Bathroom Package

- **MONOGRAM VANITY**
 - 36" TALL VANITIES W/ LOWER CUBBIES ON FURNITURE LEG PEDESTALS
 - RAISED 42" CENTER DRAWER BANK (EXTRA DEEP)
 - CENTER CABINET ON THE COUNTERTOP WITH RECEIPT
 - PICTURE FRAMED MIRRORS
- **MONOGRAM SHOWER & 60" DROP IN TUB**
 - 48" SHOWER WITH TILE SURROUND WITH MOSAIC BAND
 - PARTIAL GLASS WALL ON ONE SIDE
 - 60" DROP IN TUB
 - (1) CAN LIGHT OVER SHOWER / (2) CAN LIGHTS OVER TUB
- **ADDITIONAL AMENITIES**
 - (2) 2436 AND (1) 2436 TEMPERED OBSCURED WINDOWS OVER THE TUB
 - OPEN CABINET CUBBY WITH COUNTERTOP, WITH WALL BEHIND PREPPED FOR A MOUNTED TV (WITH CONDUIT FROM THE CUBBY)

GRAND BATHROOM

DETAILS make the DIFFERENCE

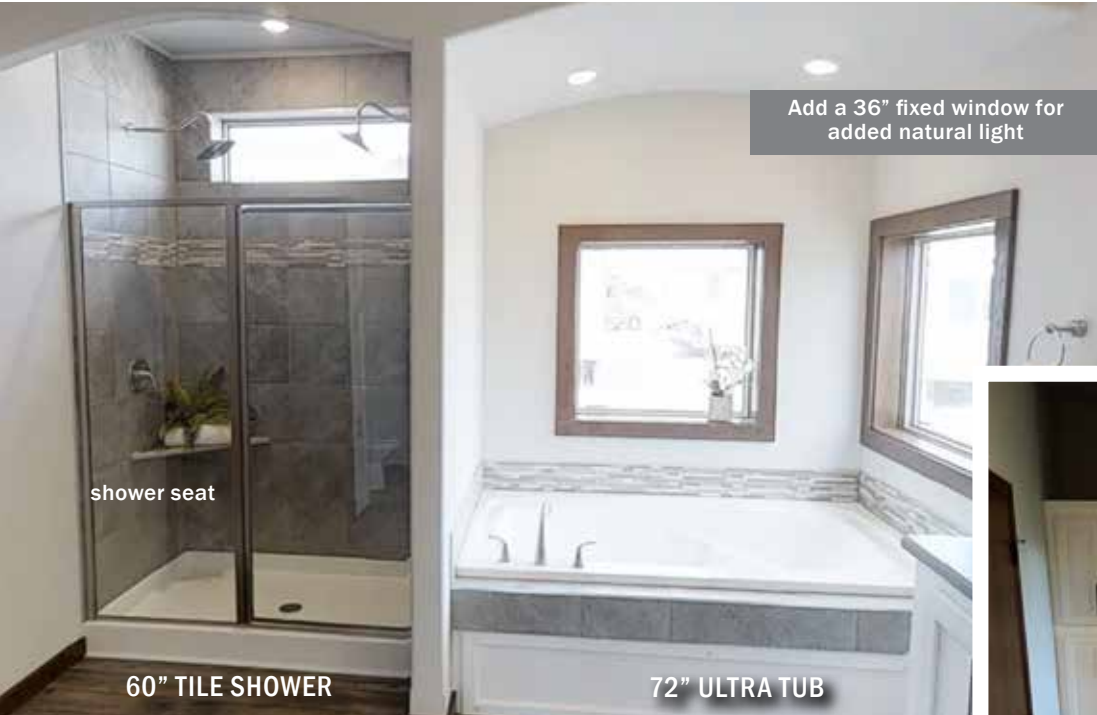


GRAND BATHROOM OPTIONS

- **GRAND VANITY OPTION**
 - EXTENDED DEPTH DOUBLE VANITY WITH (2) DRAWER BANKS
 - (2) STORAGE CABINETS ON TOP OF COUNTERTOP ABOVE DRAWER BANKS
- **GRAND SHOWER OPTION**
 - 8'X4' GRAND TILE SURROUND SHOWER WITH SEAT
 - (1) RAINFALL SHOWER HEAD AND (1) HANDHELD SHOWER HEAD
 - (2) CAN LIGHTS IN CEILING ABOVE SHOWER
 - FULLY ENCLOSED WALL OR PARTIAL GLASS WALL ENCLOSURE
- **GRAND TUB OPTION**
 - EXTENDED DROP-IN TUB DECK SURROUND (LAMINATE COUNTERTOP AND EDGE)
 - (2) STORAGE CABINETS, ONE ON EACH END OF TUB DECK
 - OPEN CUBBY UNDER STORAGE CABINETS

BATH DESIGN

Depending on your budget and space requirements, we offer a variety of tubs and showers to suit your preference. Whether you would prefer a 72" ultra tub, a 60" drop in tub, or corner tub, our designs can accommodate your needs. Don't prefer a tub? Add one of our many showers or omit the tub to gain additional vanity space instead.



shower seat

60" TILE SHOWER

72" ULTRA TUB

Add a 36" fixed window for added natural light



48"X 48" TILE SHOWER



72"X42" TILE SHOWER

Shown above, a 60" tile shower with a 72" ultra tub is standard in a Jacksonville plan. Add jets and inline heat for added comfort.

- GRAND 8' SHOWER features
- Full width seat on one end
 - Tile Surround
 - (-2) LED can lights
 - (-1) Rainfall shower head-ceiling
 - (-1) Handheld shower head



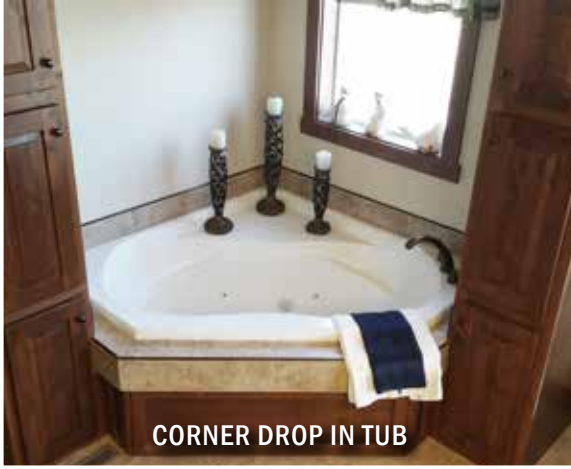
Add large format linear tile and a single or double 6" mosaic accent band to any tile shower

GRAND 8' SHOWER W/ PARTIAL GLASS WALL



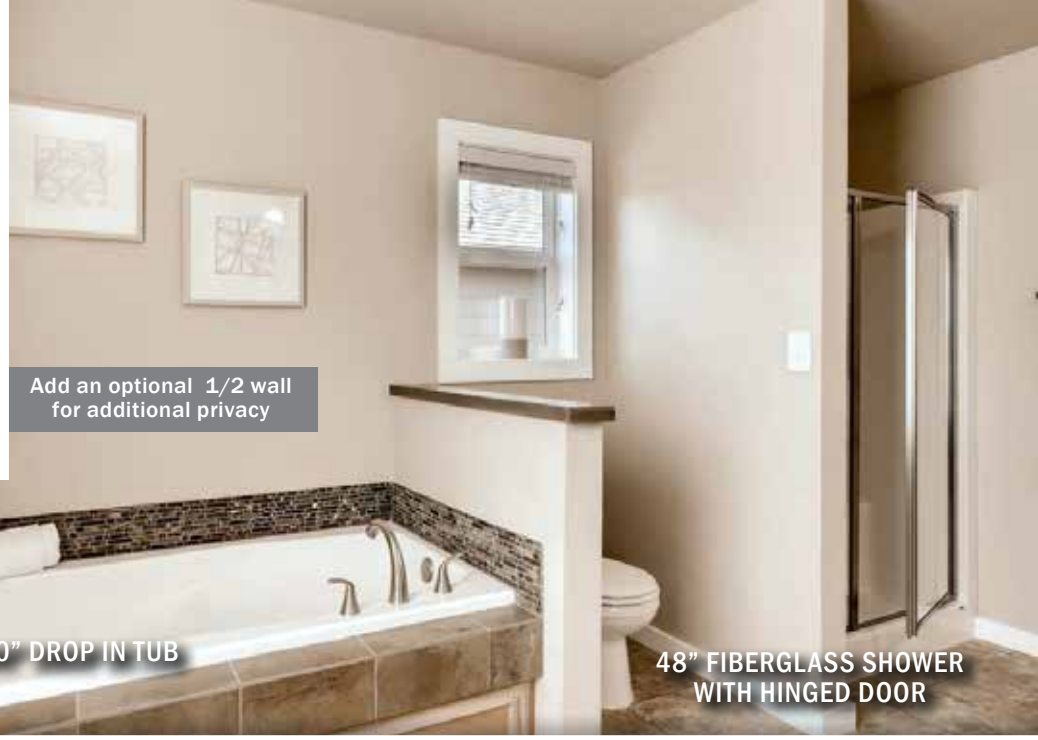
RECESSED SHOWER NICHE

72"X42" TILE SHOWER



CORNER DROP IN TUB

(shown with tile to sidewall height, mosaic accent tile, and (2) LED can lights)



Add an optional 1/2 wall for additional privacy



60" DROP IN TUB

48" FIBERGLASS SHOWER WITH HINGED DOOR



60"x42" TUB /SHOWER COMBO



OASIS TUB (with 2 tiled walls)



48" TILE SHOWER (BRONZE FINISH)

Add a vertical accent band of mosaic tile to achieve this look!



48" SHOWER W/ PARTIAL GLASS WALL

SOAP DISH
1 IN A 60" SHOWER
1 IN A PARTIAL GLASS SHOWER
2 IN A 48" SHOWER



Oasis Bathraam



DETAILS make the DIFFERENCE



Oasis Bathraam Package

- **OASIS FREE-STANDING TUB**
 - OASIS FREE STANDING TUB
 - 42" TILE ON SURROUND (2) WALLS

- **OASIS MIRROR WALL VANITY**
 - SPLIT-FACED STONE TILE VANITY WALL WITH FRAMED MIRRORS
 - 36" VANITY HEIGHT WITH (1) DRAWER BANK
 - (2) LED CAN LIGHTS ABOVE EACH VANITY
- **48" SHOWER WITH PARTIAL GLASS WALL**
 - 48" SHOWER WITH TILE SURROUND WITH MOSAIC BAND
 - PARTIAL GLASS WALL ON ONE SIDE
- **ADDITIONAL AMENITIES**
 - (2) 2436 OBSCURE WINDOWS OVER THE TUB
 - (2) BARNWOOD FLOATING SHELVES OVER THE TUB
 - (1) CAN LIGHT OVER THE SHOWER
 - (2) CAN LIGHTS OVER THE TUB

www.BONNAVILLA.com

Is accessibility a concern?



48x48 NEOANGLE SHOWER



RECESSED MEDICINE CABINET



WALL MOUNT SINK



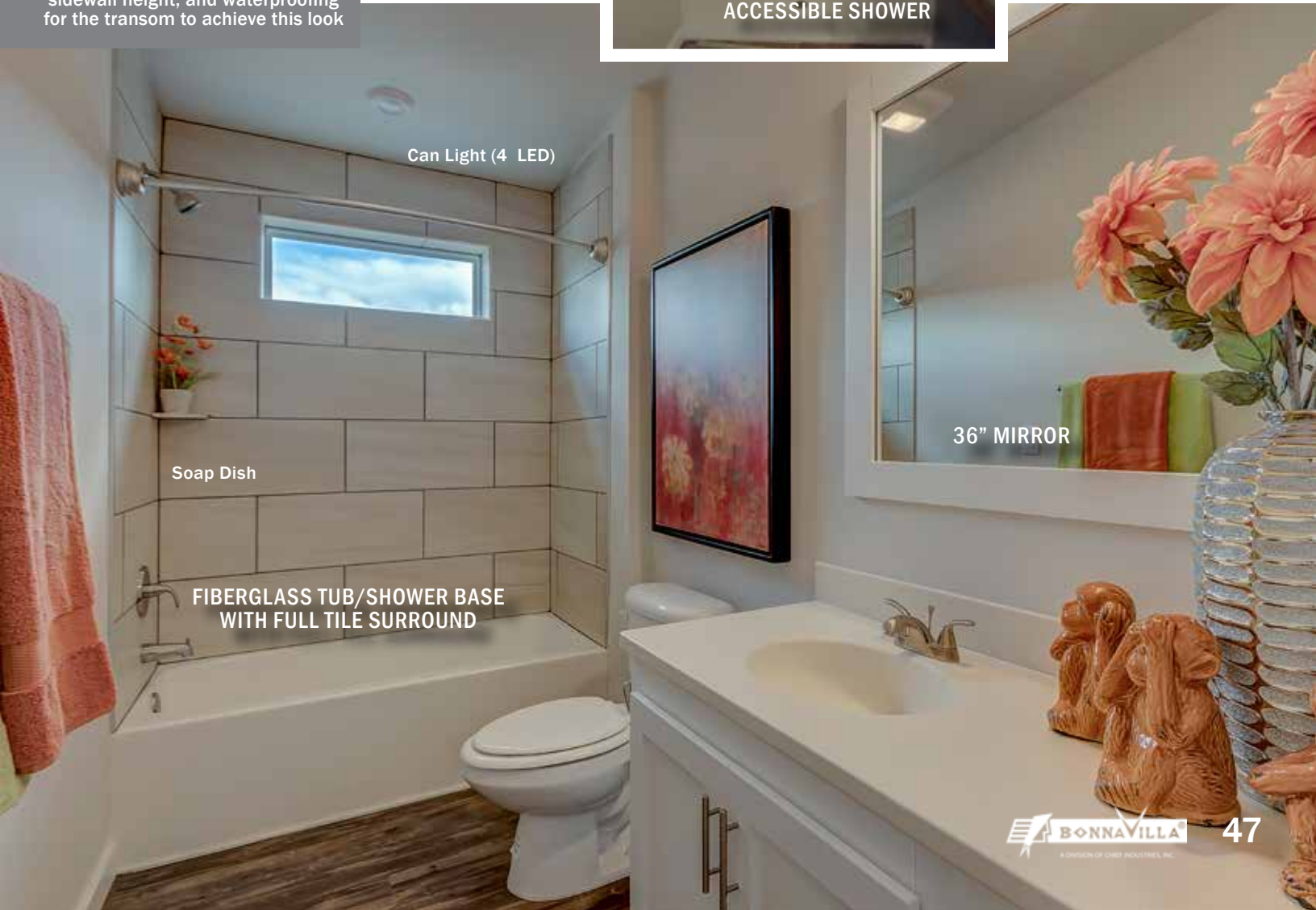
42" GRAB BAR
(24" & 36" also available)

Add an additional grab bar to a standard tub or wall area.



ACCESSIBLE SHOWER

Add a transom window, tile to sidewall height, and waterproofing for the transom to achieve this look



Can Light (4 LED)

Soap Dish

FIBERGLASS TUB/SHOWER BASE WITH FULL TILE SURROUND

36" MIRROR

UTILITY DESIGN

The Utility Room is to be both functional and inviting. Often a place to do laundry or transition between the outdoors and your home - why not make this room have all the amenities you need? Add locker cabinets, a utility sink and cabinetry, additional closet space, or even an entry hall tree.



Add Base and Overhead with a Linen Cabinet for added storage.



LAUNDRY 4 DOOR OVERHEAD CABINET WITH NO ROD



ENTRY HALL TREE



WOOD SHELF

RECESSED DRYER BOX



WIRE SHELF

Pair white cabinetry with a glue down vinyl plank flooring to achieve this look!



PREP FOR WASHER/DRYER

UTILITY SINK/CABINETRY

LAUNDRY 4 DOOR OVERHEAD
CABINET WITH ROD



RAISED WASHER / DRYER
PEDESTAL



LAUNDRY 2 DOOR OVERHEAD
CABINETS WITH ROD
(BonnaVilla standard)

1/2 CLEAR GLASS
EXTERIOR DOOR

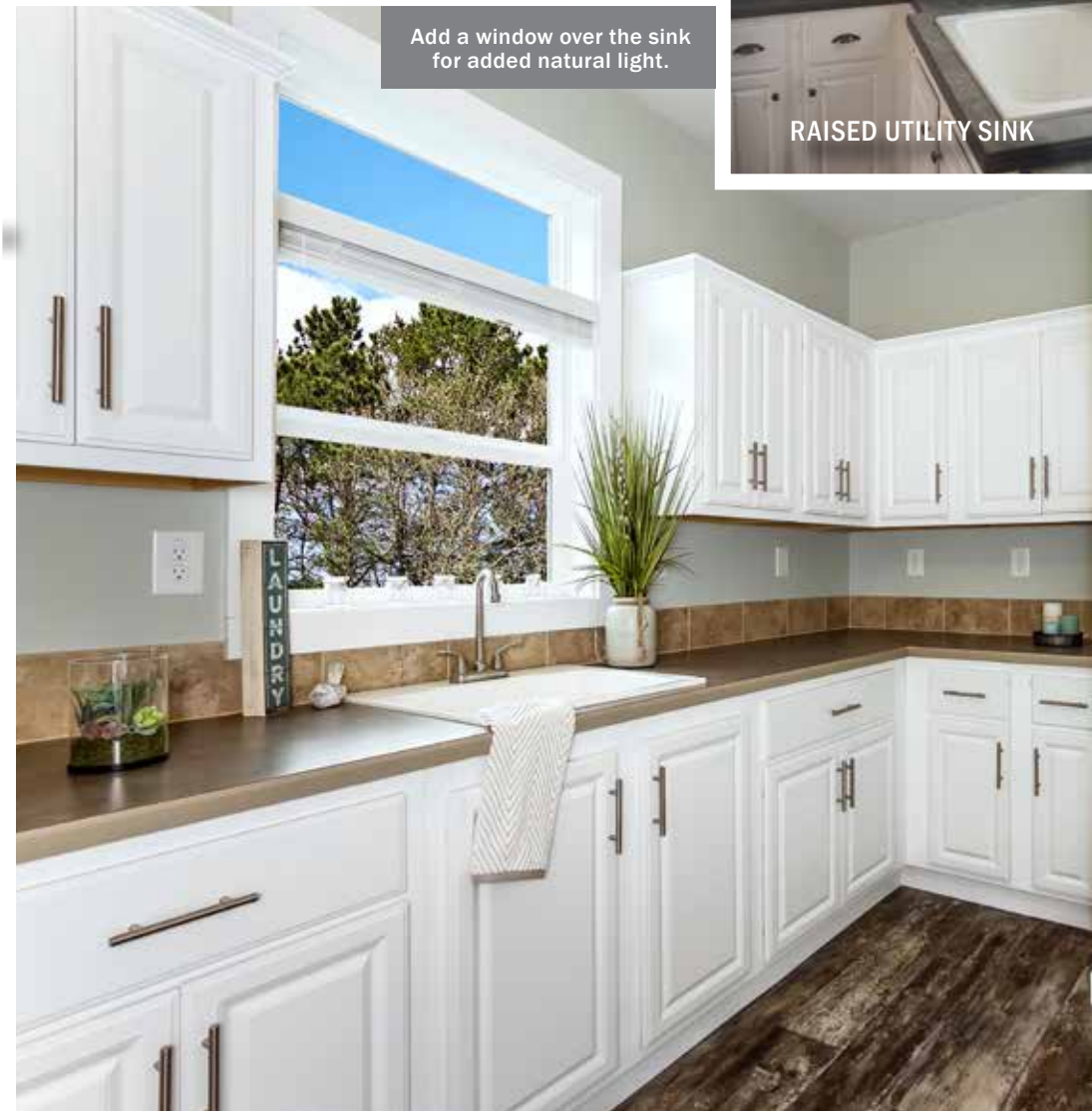


RAISED UTILITY SINK



LOCKER CABINETS

Add a window over the sink
for added natural light.





CONTACT US TODAY!



www.bonnavilla.com
402.694.5250



OUR FAMILY OF BUSINESSES



Trusted. Tested. True.

CORPORATE OFFICES

CHIEF INDUSTRIES, INC.
3942 West Old Highway 30
PO Box 2078
Grand Island, NE 68802-2078
PH: 308-389-7200
corporate@chiefind.com

DIVISIONS

BONNAVILLA®
Aurora, Nebraska
PH: 402-694-5250
FAX: 308-389-6749
housing@chiefind.com

CHIEF AGRI/INDUSTRIAL
Kearney, Nebraska
PH: 308-237-3186
agri@chiefind.com

CHIEF INTERNATIONAL
Kearney, Nebraska
DISTRIBUTION CENTER
Atwood, Indiana
ENVIRONMENTAL PRODUCTS
Grand Island, Nebraska

CHIEF BUILDINGS
Grand Island, Nebraska
Lincoln, Nebraska
Rensselaer, Indiana
PH: 308-389-7281
buildings@chiefind.com

ARROWHEAD STEEL
Grand Island, Nebraska

CHIEF FABRICATION
Grand Island, Nebraska
PH: 308-389-2100
fabrication@chiefind.com

PIVOT WALKER
Grand Island, Nebraska
POWDER COAT FACILITY
Grand Island, Nebraska

CHIEF CONSTRUCTION
CHIEF DEVELOPMENT
Grand Island, Nebraska
PH: 308-389-7222
construction@chiefind.com

HEARTLAND ELECTRIC
Grand Island, Nebraska
PH: 308-385-4600
www.heartlandelect.com

EAGLE CREST HOMES, INC.
Grand Island, Nebraska
PH: 308-382-3866
eaglecrest.ne.grandisland@chiefind.com

SUBSIDIARIES

CHIEF CARRIERS, INC.
Grand Island, Nebraska
PH: 308-389-7250
gicc@chiefind.com

CHIEF ETHANOL FUELS, INC.
Hastings, Nebraska
PH: 402-463-6885
Lexington, Nebraska
PH: 308-217-7100
ethanol@chiefind.com

CHIEF INDUSTRIES UK LTD
Maldon, Essex, England
PH: 441-621-868944
info@chief.co.uk

PHENIX-ROUSIES INDUSTRIES, S.A.
Rousies, France
PH: 33-32769-4242
phenix@chiefind.com

To find out more about our family businesses
go to www.chiefind.com



A DIVISION OF CHIEF INDUSTRIES, INC.

QUALITY MODULAR HOMES

DETAILS make the DIFFERENCE

Our mission is to provide unparalleled personal attention to meeting the needs of our customers while treating all stakeholders with dignity and respect, thereby ensuring our strength and stability.



Trusted. Tested. True.

P.O. Box 127
111 Grant Street
Aurora, NE 68818
402-694-5250 PH
308-389-6749 FAX
www.bonnavilla.com



featuring



WINDSOR
WINDOWS & DOORS
A Woodgrain Millwork Company

9.17.18